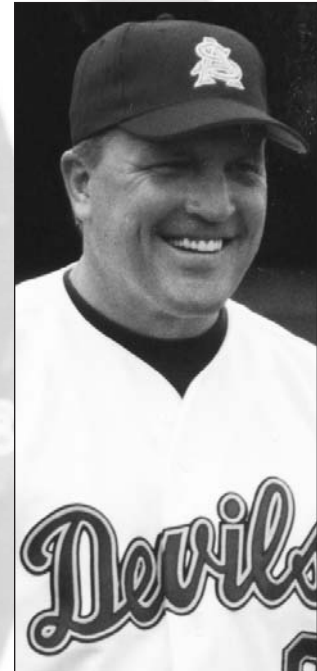
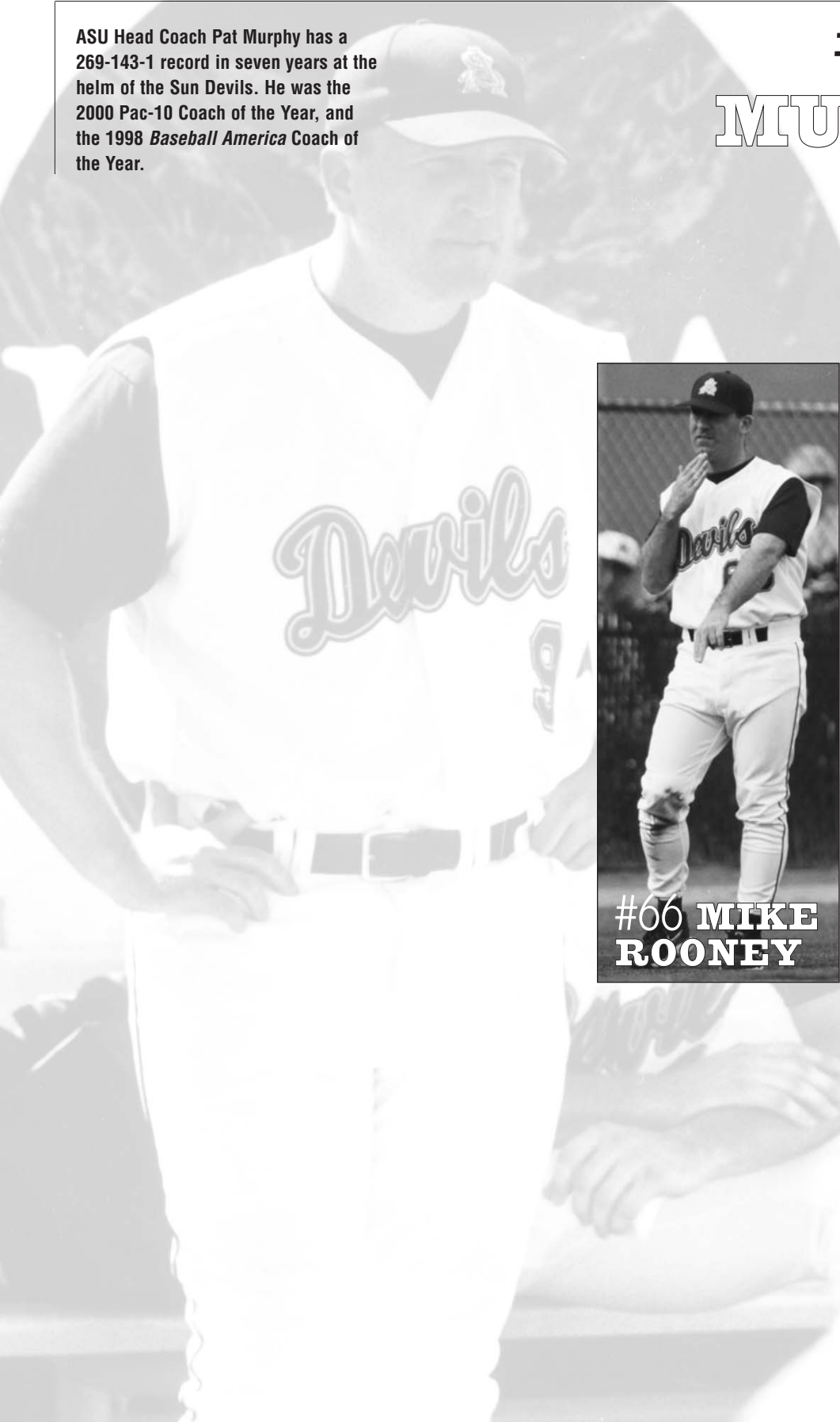


Coaches

ASU Head Coach Pat Murphy has a 269-143-1 record in seven years at the helm of the Sun Devils. He was the 2000 Pac-10 Coach of the Year, and the 1998 *Baseball America* Coach of the Year.

**#7 PAT
MURPHY**



**#66 MIKE
ROONEY**



**#21 JAY
SFERRA**

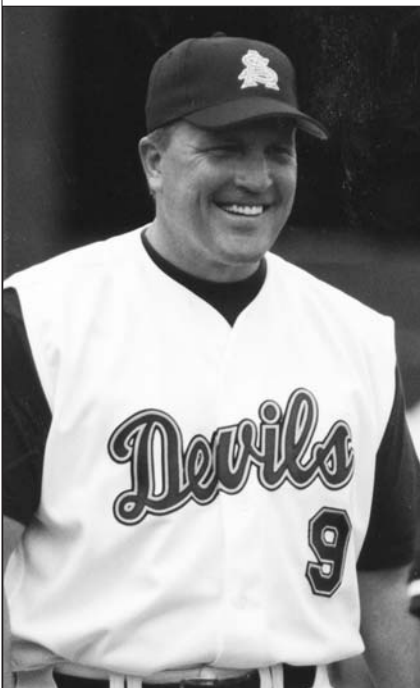




PAT MURPHY

HEAD COACH

**Sun Devil Baseball is the nation's greatest college tradition.
I am honored and proud to be a part of it.** *Pat Murphy*



PAT MURPHY YEAR • BY • YEAR

Career Record: 642-314-4 (.671)/17 seasons

Arizona State Record: 269-143-1 (.653)/7 seasons

Year	School	Overall
2001	Arizona State	37-20-1
2000	Arizona State	44-15
1999	Arizona State	39-21
1998	Arizona State	41-23
1997	Arizona State	39-22
1996	Arizona State	35-21
1995	Arizona State	34-21
1994	Notre Dame	46-16
1993	Notre Dame	46-16
1992	Notre Dame	48-15
1991	Notre Dame	45-16
1990	Notre Dame	46-12
1989	Notre Dame	48-19-1
1988	Notre Dame	39-22
1987	Claremont-Mudd Scripps	21-18-1
1986	Claremont-Mudd Scripps	24-16
1983	Maryville (Tenn.)	10-21-1

And so Pat Murphy became only the third head coach in Arizona State's 42-year modern baseball history. Following in the footsteps of legendary head coaches Bobby Winkles and Jim Brock, Murphy's seven-year tenure at the helm of the ASU program has been marked with much success. Since inheriting the Sun Devil program in August of 1994, Murphy has carefully nurtured the tradition of excellence in Tempe, at the same time establishing himself as one of the top collegiate head coaches in the nation. He has guided Arizona State to top-12 national rankings in three of the past five years, including an appearance in the 1998 College World Series national championship game. Murphy is 269-143-1 in his seven seasons in Tempe and posts an all-time 22-16 record in NCAA Tournament action. With a career 642-314-4 record in 17 seasons as a head coach, Murphy is the winningest active baseball coach under the age of 43 at any collegiate level. He also became the youngest collegiate coach to reach



500 career victories (with 75 percent of the wins at the Division I level) on March 22, 1998, with a 7-6 victory over California. Murphy is only 13 wins short of 600 career Division I wins entering the 2002 season.

Before arriving in Tempe, Murphy took a virtually unknown Notre Dame baseball program from a non-fully funded sport into the national spotlight. His Notre Dame teams averaged over 45 wins a season during his seven years in South Bend, and when he left the historic campus, Murphy

became the first coach in any sport at Notre Dame to leave a head coaching position for another job.

THE INTERNATIONAL STORY

Throughout his illustrious career, Murphy has earned accolades in the international ranks as well, as he led the Dutch Olympic baseball team in the Sydney 2000 Games. In the 2000 Olympics, Murphy returned to the international baseball scene, helping lead the Dutch National team to its best showing in international competition with a 3-4 record in the Sydney games. The Netherlands placed fifth with wins over Australia, Cuba and their rival Italy. Cuba's 4-2 loss to the Dutch was the first loss in Olympic play at the time for the international power, a span that covered 21 games. The win by Murphy's squad was noted by nbcolympics.com as one of the top four upsets in Olympic team competition. In a pre-Olympic tournament, Murphy beat Team USA and its famous manager Tommy Lasorda. No stranger to international baseball, Murphy's ties to the Dutch team stretch back more than a decade. In the summer of 1987, Murphy led Holland to the European Championship, a victory that qualified the squad for the 1988 Seoul Olympics. He was asked to coach Holland in the Seoul Olympics, but declined so he could return to the University of Notre Dame, where he had recently been named head coach.

MURPHY IN POSTSEASON PLAY

Posting a career 22-16 record (.579) in postseason play, Murphy's NCAA playoff repertoire also includes a knack for carrying out the upset victory. On four separate occasions, his teams have defeated the regional host team, while five of the last seven Murphy-coached squads to make the playoffs have reached the "Sweet 16" or better. These accomplishments have come despite the fact that his teams have been sent to play the No. 1-ranked team six times in regional play (1992 at Miami, 1993 at Florida State, 1994 at Clemson, 1997 at Miami, 1998 at Wichita State and 2001 at Cal State Fullerton).

THE STREAK

Murphy's Sun Devils can also be proud of a NCAA record 375-game streak without being shut out by an opponent. It is the longest streak in NCAA history, passing the old record of 350 set by Coastal Carolina on April 7, 2001. The last time a Murphy-led squad was shut out was on April 7, 1995, at



USC. The historic record was broken exactly seven years to the day when the Devils were last shut out.

ACADEMIC SUCCESS

Murphy's squads continue to demonstrate excellence in the classroom as well, as ASU boasted more Academic All-American selections (three) in 1999 than any other program in the nation. It was the most selections by an Arizona State baseball team in the history of the school. Former Devil Casey Myers (1998-2001) was a three-time selection to the Academic All-American team and twice the Academic All-American of the Year. In all, ASU has had five selections to the Academic All-American team since 1999—tops in the nation—and 22 Devils have earned All-Pac-10 Academic acclaim since 1995.

THE TRADITION IS ALIVE

Murphy has helped keep alive a streak of 39 straight years in which ASU has posted 30 or more victories. In the rivalry series against the University of Arizona, he has guided ASU to a 25-14 record (.641) in his seven seasons in Tempe, never losing a season series to the Wildcats. As he did in his coaching days at Notre Dame, Murphy is also overseeing the renovation of the program's facility. With ASU playing its home games in Mesa for the 2002 season, Packard Stadium will undergo a multimillion dollar renovation to improve player facilities, the stadium entrance, press facilities and the overall enjoyment for Sun Devil baseball fans.

AN OFFENSIVE POWERHOUSE

Under Murphy, the Devils offense has been consistently ranked among the best in the NCAA. The Devils led the nation in hitting in 1999 while tying a school record with a .356 team batting average. The Devils finished second in the nation in 2000 with a .346 mark and led the Pac-10 last year by a wide margin with a .327 average. The Sun Devil offense has flourished since Murphy took over the reins in 1995, combining to hit .331 as a team with an average of 9.3 runs scored per game.

THE SUN DEVIL YEARS

Most recently at the college ranks, Murphy led the 2001 Sun Devils to their fourth trip in the NCAA Tournament in the last five years, posting a 37-20-1 record. Led by All-Americans Casey Myers and Andy Torres and a crop of seven freshman All-Americans, the Devils placed third in the Pac-10 and finished ranked 22nd in the nation. Myers repeated as the Academic All-American of the Year and became only the third player in Pac-10 history to repeat as the Pac-10 Player of the Year. With Myers' consecutive selections as the Pac-10 Player of the Year, and



with Willie Bloomquist winning the award in 1999, ASU has swept the annual conference award since the old Pac-10 North and Six Pac joined three years ago.

The 2000 edition of Arizona State baseball finished with a 44-15 record, and made its third postseason appearance in four years.

Despite bowing out to Texas in the 2000 regional championship game, ASU finished within the top 12 in the nation. The Sun Devils also captured their first Pac-10 Championship since 1993 with a 17-7 conference record, earning the league's automatic bid by virtue of tie-breakers against both Stanford and UCLA.

Murphy's 2000 Devils once again made a dent in the NCAA record books, leading the nation in scoring (10.97 runs/game), and ranking second in batting average (.346), fifth in fielding (.971), seventh in home runs (1.46 HR/game), second in slugging percentage (.561) and first in triples (0.63 per game). Senior outfielder Mitch Jones, whom Murphy lured to ASU just one year earlier as a junior college transfer, set the ASU record for home runs with 27.

ASU, playing "old school" college baseball, avoided being swept by an opponent in 2000. The Sun Devils also led the Pac-10 in attendance, averaging more than 2,600 fans at each home game. Mitch Jones, Casey Myers and Jon Switzer earned All-America honors. Adding to

DID YOU KNOW

Pat Murphy's first managerial win in professional baseball (Tri City Triplets) was won by him. Down 10-1, in the ninth inning with two outs and no one on base, the Triplets came all the way back to tie the game and eventually won, 14-10, in 11 innings. Murphy pitched 4.1 innings out of the bullpen to defeat the Spokane Indians. Murphy was the player-coach for the Triplets (Northwest League) for two seasons.

his credentials, Murphy was voted the 2000 Pac-10 Coach of the Year by his peers.

During the 1999 season, Murphy assembled one of the most prolific offensive teams in ASU history.

Concluding the year with a 39-21 overall record, the 1999 Sun Devils led the nation in batting average (.356) and scoring

(11.32 runs per game). Their .356 team average tied the top single-season mark in ASU history, set by the 1981 National Championship Team. The Devils had the remarkable offensive season despite playing the first 17 games of the season with wood bats. In addition, the Sun Devils led the conference in virtually every offensive category. Arizona State had more players drafted in the 1999 Major League Amateur Draft (10) than any other school in the Pac-10 Conference. The 1999 season also produced a Sun Devil Pac-10 Player of the Year and current Seattle Mariners top prospect, shortstop Willie Bloomquist.

Murphy and his coaching staff led the 1998 Sun Devils to the pinnacle of collegiate baseball: the College World Series in Omaha, Neb. It was Murphy's first trip to the big show, and it would be a memorable one. Earning an at-large bid into the NCAA Tournament, Murphy's squad would be tested once again by being sent to play the No. 1 team in the nation. Traveling to Wichita, Kansas, the Devils started a journey that would eventually land them in college

THE LUCK OF THE IRISH

During his seven-year head coaching stint at Notre Dame, Murphy led the Irish to a 318-116-1 record. Taking the non-fully funded program from a virtual unknown into a national power, he led the Fighting Irish to the NCAA tournament in only his second year (1989), ending a 18-year stretch with Notre Dame not advancing to the NCAA tournament. The Irish averaged just over 45 wins a season under Murphy and advanced to the NCAA Regional Finals three different times.

continued

Pat Murphy continued



baseball's premier showcase, becoming ASU's 18th team to play in the annual College World Series, and only the second to play for the national championship without having hosted a regional tournament.

The Devils finished regional play 4-1, notching wins over nationally ranked Georgia Tech, Oklahoma State and Wichita State along the way to advance to Omaha. Advancing through the CWS bracket without a loss, ASU faced Pac-10 foe USC in the championship game. In a record-breaking game, ASU came up short, falling to the Trojans 21-14. ASU finished second in the nation with a 41-23 overall record and a third-place finish in conference play (18-11). After storming through the post-season, falling just one win short of a national championship, the Sun Devils concluded the season with a consensus No. 2 ranking, and a total of six players earned All-America status. In addition, 10 Sun Devils were taken in the 1998 MLB Amateur Draft, including Ryan Mills, the sixth pick overall by the Minnesota Twins. In just his fourth season at ASU, Murphy became the second-fastest Pac-10 coach to reach the CWS championship game, behind only former Sun Devil coach Jim Brock. For his efforts, he was named the *Baseball America* National Coach of the Year.

Only two years into his ASU coaching career, Murphy took the program back to where it belonged: in postseason play. Murphy guided the Devils to their 16th regional appearance, taking

his team across the country to face No. 1 seed Miami in Coral Gables. The '97 Sun Devils came within one out of making an 18th trip to Omaha, bowing out in the championship game of the Atlantic Regional to host Miami in dramatic fashion. After defeating the No. 1 Hurricanes 10-3, ASU dropped a pair of one-run games to Miami to fall short of a trip to Omaha. ASU finished with a No. 11 ranking by *Baseball America* and a 39-22 overall record.

The Sun Devils again fell short of the NCAA Tournament in 1996, despite finishing the year ranked 25th by *Baseball America* and posting 35 Division I wins, with eight of those coming against top 25 teams. The 1996 squad posted the fourth-best team batting average (.338) in ASU history, and led the Pac-10 Southern Division in seven offensive categories including batting average, runs and hits. The Devils recorded a 35-21 record, despite being without pitching aces Phill Lowery, Kaipo Spenser and Ryan Mills for most of the year. Murphy graduated 11 players from the 1996 team to the Major League Baseball Amateur Draft.

Inheriting an average team in 1995, at a school where average is unacceptable, with only two returning starters and without the benefit of his own recruiting class, Murphy's first ASU squad posted 34 wins in 1995. Always having a flair for the big game, nine of those victories came over top-10 foes, such as College World Series participants USC, Stanford and Florida State. During one stretch of games in mid-March, Murphy led the Devils to six consecutive wins over eventual CWS participants Oklahoma, USC and Stanford. Despite being ranked in the top 25 all season and the numerous big wins, the Devils fell short of a trip to the NCAA Tournament, but the foundation was laid for the Devils to remain as one of the powers in college baseball.

ALWAYS A TOP RECRUITING CLASS

The 43-year-old Syracuse, N.Y., native and his coaching staff have assembled some of the finest recruiting classes in the nation during each of the past seven years. His 1995 class was ranked No. 1 in the nation with names such as Phill Lowery, Andrew Beinbrink and Ryan Mills. Seven straight Gatorade Players of the Year have committed to Arizona State. Year after year, Murphy lands the nation's top talent—as the incoming recruiting class for 2002 is listed by *Baseball America* as one of the best in the



nation. Murphy and his staff inked 26 players for the 2003 team, including seven players listed in *Baseball America's* Top 100. Despite a current trend that sees many teams reload with only top prospects, Murphy also brings players in to mold into a scrappy and hustling player. As *Baseball America* proclaimed in its annual recruiting class review in reference to Murphy's and ASU's unique and successful style of recruiting, "If you don't understand it, then you're not a Sun Devil."

COMMUNITY SERVICE A SIGNATURE OF MURPHY

Community outreach has been a signature of Murphy's teams, which are taught to give back to their communities and be positive role models. In 1995, he founded the Guadalupe Project, which provides baseball instruction and life skills lessons to underprivileged youth from Guadalupe, Ariz., a small town within the metro Phoenix area. The program provides year-round mentoring for kids aged 7-12 by Arizona State assistant coach Jay Sfera and student-athletes, where the primary goal to build leadership skills and self-esteem, encourage academic success and explore career opportunities. With help from the Tempe Diablos, Murphy also instituted the annual Diablo Free Youth Clinics, held at ASU's Packard Stadium each November and December for kids aged 7-12. More than 250 kids took part in 1999. In January 2000, Murphy and ASU baseball sponsored the first 5K Fun Run to Beat Lou Gehrig's Disease, along with the ALS Arizona Chapter. Last year saw Murphy take part in a charity boxing match with Father Joe to raise funds for his Guadalupe Project. For his constant community service and giving back to the greater Phoenix area, Murphy was awarded the 2001 March of Dimes Leadership Award.

THE NOTRE DAME YEARS

Prior to arriving at Arizona State, Murphy spent the previous seven seasons as head coach at the University of Notre Dame, where he guided the Irish to a consistent level of success unmatched in the history of the program. Building the program from the ground up with the support of only four full scholarships, Murphy guided the Irish to a 318-116-1 (.732) record in

DID YOU KNOW

- During his Division I head coaching career, Murphy's teams have averaged 42 wins per season. During his seven years at Notre Dame, Murphy led the Irish to an average of 45 wins a season for seven years.
- Murphy's Sun Devil teams have been one of the most potent offensive teams in the NCAA each year. In fact, since 1995, Murphy's teams have combined to hit .331 with an average of 9.32 runs scored per game. ASU led the nation in runs scored and batting average in 1999-2000 and set a school record in 1999 with a team .356 batting average.
- During his 17 years as a head coach in collegiate baseball, he has never had one of his players declared academically ineligible.
- Murphy was named the 2000 Pac-10 Coach of the Year by his peers and the 1998 *Baseball America* National Coach of the Year.
- Attendance at Packard Stadium during Murphy's tenure has constantly improved and has led the Pac-10 in each of his seven years as head coach. Last year, ASU finished 10th nationally and was the highest-ranked team on the West Coast.
- ASU has an average end-of-the-year national ranking of 15th in the nation over the last five years under Murphy. ASU ended the year in the top 12 in the nation in three of those five years. ASU has currently spent 38 straight weeks in the national polls, dating back to the start of the 2000 season.
- Murphy was the first head coach at Notre Dame to leave for another college head coaching job.
- Murphy coached four years of Division III college football.
- While in South Bend, Murphy helped found the Team One Showcase that stands today as one of the premier amateur baseball showcases in the nation.
- Murphy's first recruiting class at Notre Dame included a pair of infielders from Milwaukee and Philadelphia. Those two players were respectively current Arizona Diamondback Craig Counsell and ASU assistant coach Mike Rooney.



South Bend, including consecutive trips to NCAA regional finals in 1992, 1993 and 1994, a streak matched only by Texas. He built Irish baseball into a top-25 program, laying a strong foundation that still exists today. Under Murphy's guidance, the Irish averaged more than 46 wins per season and rejuvenated the pride in the program to the point where a new 3,000-seat stadium was built on the campus in the fall of 1993. Murphy's 1994 Notre Dame squad finished 46-16 and came within one win of a trip to the College World Series. The Midwestern Collegiate Conference champions advanced to the finals of the NCAA East Regional in Clemson, S.C., knocking off the host and No. 1-ranked Tigers along the way. Notre Dame finished the season ranked 18th by *Collegiate Baseball* and 20th by *Baseball America*. Current Arizona Diamondback Craig Counsell and Texas Rangers pitcher Chris Michalak are just two of Murphy's products from ND who have excelled at the major-league level.

Murphy began his Notre Dame tenure in 1988, taking over a team that posted a combined 65-80 record in its three previous seasons. With a nucleus of players who finished 15-29 in 1987, and had never enjoyed a winning season at Notre Dame, Murphy began revamping the program and promptly led the Irish to a 39-22 mark. The following six campaigns saw the Irish garner national rankings, conference titles, NCAA tournament appearances, 45-win seasons and more.

Murphy's efforts were rewarded in just two years, as in 1989, the Irish posted a school-record 48 wins and logged their first NCAA Tournament appearance in 19 years. Murphy guided the program to its first national ranking as the Irish were rated that year as high as 16th in *The Sporting News*, 23rd in *Baseball America* and 24th in the *Collegiate Baseball* polls. Later, the Irish would earn their first MCC title by winning the final four games of the conference tournament in a span of 23 hours as Murphy snared his first MCC Coach of the Year honor. That season was followed by two more 45-win seasons. The 1990 Irish squad put together a 46-12 record, which ranked fourth in the nation. Over the last 29 games of the season, Notre Dame achieved a 25-4 mark to bring Murphy another MCC Coach of the Year award.

In 1991, Notre Dame overcame a schedule that saw the Irish play their first 27 games on the road to post a 45-16 record. Included were wins away from home over national powers Texas and Miami, as well as eventual national champion LSU, and a mid-season 18-game win streak. In 1990, Murphy began a baseball tournament hosted by Notre Dame that was held in Seattle's Kingdome. The 1992, 1993 and 1994 seasons added emphasis to Murphy's status as

one of the nation's top coaches, as his Irish teams grabbed MCC titles and in each year beat regional hosts to come within one game of a trip to Omaha for the College World Series. It's no wonder why the Irish were labeled in 1992 by *Baseball America* as "the nation's fastest rising program." In fact, Murphy shunned the University of Miami's attempts to lure him away from Notre Dame and accept the Hurricanes' head job in 1992. When he left Notre Dame for ASU in 1995, he became the first Irish head coach of any sport to leave South Bend for another job.

WHERE IT ALL STARTED

In addition to his head coaching and international coaching experience, Murphy has spent numerous years in the collegiate ranks as both a player and assistant coach. He gained his collegiate experience as a pitcher at Florida Atlantic University, where he received his bachelor's and master's degrees. Murphy played catcher, infield and pitched for FAU, and was recently honored on FAU's 20th Anniversary All-Star team as a pitcher and utility player. After college, Murphy signed a professional baseball contract with the San Francisco Giants in 1982. His four-year professional career included stints in the Giants and San Diego Padres organization, along with two independent clubs.

Murphy began his collegiate head coaching career at Maryville (Tenn.) College, leading the Division III Fighting Scots to their best record in 10 years during his first and only season in 1983. He was also an assistant football coach while at Maryville. He then returned to Florida Atlantic to serve as an assistant coach and administrative assistant to the athletic director. During Murphy's two-year stay, FAU compiled an 84-30 record and was consistently ranked among the top-10 Division II teams in the nation.

During the summer of 1984, Murphy embarked on his first international experience, helping develop baseball in Australia as a state manager in New South Wales. He was in charge of running baseball clinics and promoting the sport to the public. Following his stint in Australia, Murphy was named player-coach of the Tri-Cities (WA) Triplets of the Single-A Northwest League, making him the youngest manager in professional baseball.

WHAT THEY ARE SAYING:

"What makes Pat Murphy so successful is his philosophy: playoff baseball every day. he says to watch the major leagues. they don't play like that every day... hit-and-run, stealing, bunting, moving runners over. When they get to the playoffs, all of a sudden they start doing the little things. That's what Murphy and his team's do all the time."

-- Willie Bloomquist, former Sun Devil All-American and current Seattle Mariner prospect.

MURPHY'S FAVORITES

- Bruce Springsteen
- Muhammad Ali
- Ara Parseghian

A return to the college ranks came in 1986, as Murphy signed on as head coach at California's Claremont-Mudd-Scripps Colleges. In his first year as head coach, Murphy piloted Claremont to a 24-16 record, earning the program its first Southern California Intercollegiate Athletic Conference championship in 11 years. Murphy was named the West Region's Division III Coach of the Year as the Stags finished the year ranked 10th in the nation.

A COACHING HOTBED

He has also made ASU a hotbed for up-and-coming head coaches. Murphy has had four former assistant coaches take Division I head coaching jobs in recent years (Brian Cleary, Cincinnati; Doug Schreiber, Purdue; Nino Giarratano, San Francisco and John Pawlowski, College of Charleston). Current assistant coaches Mike Rooney and Jay Sferra are widely considered two of the top recruiters and assistant coaches in the nation.

A FAMILY MAN

Murphy is married to Argee Montano of Hermosillo, Mexico and they have a baby boy, Kai Joseph (1), who was born on August 26, 2000. Murphy also has a daughter, Keli (16) who lives in Morristown, Tenn.



Coach Murphy's daughter, Keli (16)



Kai Joseph, Pat and Argee Murphy.



Assistant Coaches

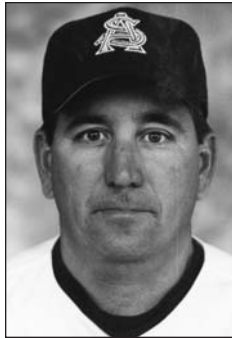
JAY SFERRA

ASSISTANT COACH, SEVENTH YEAR

Jay J. Sferra begins his seventh year at Arizona State University. In addition to his duties as the recruiting coordinator, Sferra will handle a variety of responsibilities for Murphy including coaching the pitchers.

"Jay has been an integral part of Sun Devil baseball and no one works harder," said head coach Pat Murphy. "He has the pulse of high school baseball and will be instrumental in our recruiting efforts. As recruiter, his focus is not only on bringing talent into the program, but also kids with great character."

As the recruiting coordinator, Sferra has established himself as one of the nation's top recruiters. This year's recruiting class that makes up newcomers for 2002 was ranked as one of the top 12 recruiting classes in the nation by *Baseball America* and *Collegiate Baseball*. ASU also signed 26 players during this year's early signing period. The class of 26, engineered by Sferra and Murphy, is widely considered the best in the nation, with



seven players who are ranked in *Baseball America's* Top 100.

For the previous five years, he was the director of instruction for Murphy's Pitch-by-Pitch Baseball Academy and the director of Coach Murphy's program for youth, the Guadalupe Project.

The program provides baseball instruction and life-skills lessons to the youth of Guadalupe and is a favorite among the Sun Devil players. "This program is all about personal development for our players and the kids in Guadalupe," said Sferra.

Sferra is a 1977 graduate of the University of Colorado with a degree in recreational administration and a minor in business marketing. He was a four-year letterwinner in baseball and three-year letterwinner in basketball. An All-Big-Eight selection and honorable mention All-American in 1976 and '77, he ranks at the top of several all-time Buff categories. He trails former major-lea-

guer John Stearns by one in lifetime hits and is third on the career list in runs scored, triples, doubles and stolen bases. He holds the all-time record in Colorado history with 621 at bats. He holds the NCAA record for most at bats in a single game with 10, in a 22-inning game vs. Nebraska. He had three bunt hits in that game. As a basketball player, Sferra was the starting point guard for CU and figures eighth all time in career assists at Colorado. While playing summer ball for the Boulder Collegians in 1977, he played with Arizona State notables Bob Horner and Hubie Brooks.

Sferra was named 1972-73 basketball and baseball Player of the Year in high school at Christian Brothers Academy in Syracuse, N.Y.

He signed professionally with the Philadelphia Phillies organization in 1978 and played in the New York-Penn League.

Born and raised in Syracuse, N.Y., Sferra and his wife, Gerrie, have two children, Carrie (19) and J.J. (16). Carrie is a freshman at Arizona State, while J.J. is a sophomore at Mountain Pointe.

MIKE ROONEY

ASSISTANT COACH, FOURTH YEAR

Mike Rooney begins his fourth season as an assistant coach for the Arizona State baseball team. He handles a variety of duties on and off the field, including coaching the infielders, coaching third base, team defense and is in charge of the academic side of the baseball program.

Rooney has been instrumental in taking ASU's relatively young and inexperienced infield and making it one of the best defensive infields in the league. Last season the Sun Devils finished fifth in the NCAA with a .971 fielding percentage.

Rooney spent five years coaching at Malvern Prep in Malvern, Pa., prior to arriving at ASU. While at Malvern Prep, he coached two first-round MLB picks in four years as the head coach:



Ben Davis (2nd pick overall by the Padres in 1995) and Josh McKinley (11th pick overall by the Expos in 1998). He also coached future first-round pick Glenn Davis (27th pick overall by the

Dodgers in 1997), who played at Vanderbilt after graduating from Malvern Prep. During Rooney's tenure, his teams averaged 22 wins per season while setting a school record for victories in 1997 with 26. He was a successful fund-raiser at Malvern Prep, adding indoor and outdoor batting cages for the program, and toured Florida and Puerto Rico on baseball trips.

A graduate of Notre Dame in 1992, Rooney

earned his bachelor's degree in business administration and accounting. While at Notre Dame, he played for Coach Murphy from 1989 to 1992 on the Irish baseball team. Rooney played six different positions during that time (every position except first, pitcher and catcher). He was a member of the '92 squad, which was one win away from a trip to the College World Series. While Rooney was with the Irish, the teams averaged 47 wins per year. A native of Philadelphia, Rooney competed throughout his ND career with current Arizona Diamondback and 2001 NLCS MVP Craig Counsell.

Rooney earned his master's in educational Administration from the University of Phoenix in March 2000.

"Rooney was a winning player for me at Notre Dame and he has been tremendous here at ASU," said Murphy. "He is a true teacher of the game."



Support Staff

ASU BASEBALL

Chris Holick

Director Baseball Operations

Chris Holick enters his second year in the Arizona State baseball office. Holick is the Director of Baseball Operations and also oversees all ASU Baseball camps. A two-year letterman in baseball at both Indiana and Kent State, Holick brings solid baseball credentials to the ASU Baseball program. Holick was an All-Big Ten Academic selection at Indiana and played on the Big Ten Championship team in 1996. He transferred to Kent State after his sophomore year and was a two-year starter for the Golden Flash. After graduating, he served as the volunteer assistant coach in 2000 for Kent State, helping coach the team to the conference championship. In the summers of 1999 and 2000, Holick worked for Blue Streak Sport Consulting in Cleveland, Ohio, and helped coordinate the Cleveland Indians' baseball camps. In the fall of 2000, he worked as the Grand Canyon Rafter's Operations Manager for Major League Baseball's Arizona Fall League. Holick is a native of Westlake, Ohio.

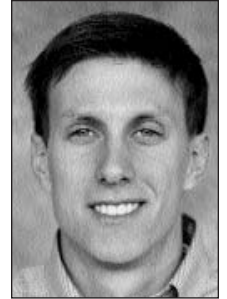


Graham Rossini

Director Baseball Administration

Graham Rossini begins his first year as Director of Baseball Administration after serving as a Baseball Operations Intern the previous two seasons. Rossini will manage the day-to-day operations of the baseball office, oversee the game operations at Hohokam Park and is responsible for official recruiting visits, team travel and all other business aspects of the baseball office. Rossini is the liaison between the baseball office, media relations office, the Pac-10 Conference and the NCAA.

Prior to coming to ASU Baseball, Rossini spent three years with the San Diego Padres' Class AA affiliate in Mobile, Ala. He will graduate in the spring of 2002 with a degree in Business Management and begin a master's degree in Sports Administration in the fall. He is a native of Mobile, Ala., where he was a baseball and academic standout at Baker High School.



Kenny McCarty

Sports Medicine, 5th year

Kenny McCarty begins his fifth year as the head trainer of the Arizona State baseball program. An invaluable part of the program with his extensive knowledge of baseball-related injuries, McCarty has successfully rehabbed two pitchers from Tommy John surgery, including Sun Devil All-American pitcher Mike Esposito. He is currently working to rehab Matt Leaf with the same injury.

"Kenny is an invaluable part of our program," said head coach Pat Murphy. "What he has done with Esposito and some of our other players, getting them healthy, is truly amazing."

McCarty came to ASU in 1996 after graduating from Purdue University in 1996 with a degree in Athletic Training. The native of Freemont, Ind., McCarty is very active in the NATA (National Association of Athletic Training) and also teaches an Athletic Training class at Arizona State.



Jim Mancuso

Conditioning Coach, 7th year

Jim Mancuso begins his seventh season with the Sun Devil baseball staff. He heads up the rigorous strength and conditioning program that prepares the Sun Devils for the upcoming season. A former Sun Devil baseball pitcher, Mancuso was well-known and well-loved by coaches, teammates and fans alike. Mancuso was hampered by injuries throughout his Sun Devil career, but was an inspiration to his teammates through his hard work and dedication. He had carried on that work ethic to the strength, conditioning and stretching programs that ASU baseball players live by today. A '95 graduate of ASU, Mancuso passed the Arizona Bar Exam last year and is practicing at a law firm in downtown Phoenix.



Jeff Evans

Media Relations, 2nd year

Jeff Evans begins his second year as the Sports Information Director for Arizona State baseball. Prior to his duties at ASU, Evans was the sports information contact for baseball at Washington State University. Evans is a 2000 graduate *Cum Laude* from WSU with a degree in Public Relations. He is an active member in CoSida and the National Collegiate Baseball Writers Association of America. He has also served internships with the American Junior Golf Association (AJGA) and with the Triple-A Tacoma Rainiers.





Q & A

WITH ASU BASEBALL



Q: What is the philosophy behind playing what will most likely be the toughest schedule in the nation in 2002?

A: We feel that the Pac-10 is the toughest conference in the nation, and that is evidenced by the fact that five of the last eight teams to play for the national title in college baseball have been Pac-10 teams. Therefore, our schedule has to match that difficulty for proper preparation for our conference and, hopefully, postseason schedule. We will play 22 games this year vs. teams that participated in the NCAA tourney in 2001, and 12 of those games will be against teams that made it to the College World Series.

Q: How have former Sun Devils made an impact in professional baseball?

A: The season that Barry Bonds had in 2001 speaks for itself. Our entire program is tremendously proud of his accomplishments. Overall, we have six former Sun Devils currently in the major leagues and another 39 in minor-league baseball, and the great number of these players speaks volumes for the program and the level of player who is attracted to ASU. Most recently, nine members of our 2001 team have moved on to professional baseball. Brooks Conrad, Chris Duffy and Casey Myers all earned MVP honors of their teams in their first season of pro ball, and that is really exciting.

Q: How is recruiting affected by professional baseball?

A: Almost all of our recruits will be drafted each spring, and that makes it very difficult to maintain a strong recruiting class. As the signing bonuses in baseball continue to escalate, this will not get easier. However, we will continue to recruit the very best student-athletes in the nation, and we always anticipate that about half of these players will choose signing a professional baseball contract over playing college baseball. Therefore, after the draft has hit, our typical recruiting class of 20 players will then be reduced to 10 players who will actually matriculate at ASU. While this can be disappointing, we are always happy for these players as they chase their dream of playing major-league baseball. Players like Jimmy Rollins, Ben Petrick and Nick Bierbrodt are prime examples of guys who committed to ASU for baseball but then signed professionally and are already in the big leagues. We are not only excited for their successes but also proud that they once

chose ASU over other college baseball programs.

Q: What are the keys to recruiting quality student-athletes to the Sun Devil baseball program?

A: One of these keys is that our great tradition enables us to recruit the entire country and, for example, we were able to land potentially the best player in the state of Florida this year, despite the numerous outstanding college baseball programs in that state. Also, we are very interested in our recruits having outstanding personal character in addition to exceptional baseball talent. Thus, the kids in our program our first-class people and they will always attract excellent student-athletes to our program. Our current players sell our program, and it is no surprise that our last three recruiting classes have been ranked No. 1, No. 8 and No. 1 in the nation, respectively.

Q: How does attendance at ASU baseball games compare to the rest of college baseball?

A: Out of the 270 schools playing baseball in 2001, attendance at Sun Devil baseball ranked No. 10 in the entire country. We drew almost 100,000 fans last season, and that figure led both the Pac-10 and the entire West Coast. Our baseball atmosphere here at ASU is outstanding, and our entire team really appreciates it and enjoys it.

Q: What are the unique graduation challenges for the Sun Devil baseball player?

A: Our players are eligible for the baseball draft after their junior year, and over the last five years, 58 of our juniors have in fact been drafted. Since the year following a player's junior season is his best opportunity for bargaining leverage in the draft, this is the ideal time for these players to sign a professional contract. Thus, 85% of these juniors have signed professionally. Once a student-athlete enters minor-league baseball, the logistics involved with taking classes and eventually graduating are quite challenging. We believe the key here is to stay on track to graduation in the student-athlete's first three years at ASU. Despite these inherent difficulties, we are extremely proud of the fact that 51 of our players have graduated in the last seven years. Also, ASU had led all of college baseball in our number of Academic All-Americans over the last three years.

Q: What have been the effects of the recent changes in college baseball?

A: The parity in college baseball is greater than it has ever been. Whereas 20 years ago, many of the

top programs had 30 full scholarships to award, the current NCAA limit is 11.7 full scholarships for the entire program of 30-40 players. This has helped level the playing field in some ways, while at the same time increasing the importance of financial aid that can be awarded at private institutions and individual state scholarship programs as seen in such states as Louisiana and Georgia. Unfortunately, we at ASU are unable to take advantage of either of these opportunities, and this puts great stress on our limited scholarship dollars. In addition, the college baseball season has been pushed back by two weeks over the last five years, and this is helping cold-weather programs to even the gap with the warmer-climate programs that are the traditional powers.

Q: What are the effects of the recent changes in NCAA regional format?

A: Since the tourney will actually now be regional, it will make it very difficult for West Coast teams. This is because the strength of college baseball is in the West, but there are far fewer teams there than in the East. So quality teams from the West will be matched up very early in the tournament. The key, then, to getting a quality draw in the tourney becomes hosting a regional. This has also been proved over time as the Sun Devils have only three trips to Omaha that occurred when not hosting a regional, compared to 15 trips to Omaha in years in which we did host a regional. Besides having a great season, the other key to being awarded a host regional site is having an outstanding facility. There is no doubt that the exciting renovations that are coming up for Packard Stadium will have an enormous impact on our program.

Q: What have been the keys to the Sun Devils' recent offensive successes?

A: We are very proud of the fact that we have led the nation in both batting average and runs scored in two of the last three years. Those statistics, combined with our current NCAA record streak of 375 games without being shut out, are great indicators that our hitters are on the right track. The key to this type of offensive production is the concept of team offense. Our hitters have been very unselfish, and put the team goals ahead of their own. We feel this is why our offense has been so successful, because of a tremendous team attitude.