

#20 BAYLOR (19-6, 8-6 Big 12) vs. #23 TEXAS A&M (14-7, 7-6 Big 12)
 NOV. 7, 2009 | REED ARENA (12,989) | COLLEGE STATION, TEXAS



Match 26 • Saturday • #20 Baylor vs. #23 Texas A&M • 6:30 p.m. CT

'08 Postseason Result: n/a

All-Time Series: Texas A&M leads, 49-10 (Streak - TAMU W2)

Last BU win: Oct. 17, 2008, 3-1 **Last TAMU win:** Oct. 10, 2009, 3-1

2009 schedule

Aug. 28	^	vs. Southeastern Louisiana	W, 3-0
Aug. 28	^	at Houston	W, 3-0
Aug. 29	^	vs. New Orleans	W, 3-0
Sept. 1		at TCU	W, 3-2
Sept. 4	#	UCF	W, 3-0
Sept. 5	#	TEXAS-SAN ANTONIO	W, 3-0
Sept. 5	#	#24 PURDUE	W, 3-2
Sept. 8		TEXAS STATE	W, 3-0
Sept. 11	~	vs. (rv) Pittsburgh	W, 3-0
Sept. 11	~	at New Mexico	W, 3-2
Sept. 12	~	vs. Cal State Fullerton	W, 3-0
Sept. 16	•	at #2 Texas (ESPNU)	L, 0-3
Sept. 19	•	(rv) KANSAS STATE	W, 3-1
Sept. 23	•	#11 IOWA STATE	W, 3-0
Sept. 26	•	KANSAS	W, 3-0
Sept. 30	•	MISSOURI	W, 3-0
Oct. 3	•	at Colorado	W, 3-0
Oct. 7	•	at Texas Tech	W, 3-0
Oct. 10	•	(rv) TEXAS A&M	L, 1-3
Oct. 14	•	#7 NEBRASKA	L, 0-3
Oct. 17	•	at Oklahoma	L, 2-3
Oct. 24	•	at Kansas State	W, 3-1
Oct. 28	•	at #9 Iowa State	L, 2-3
Oct. 31	•	TEXAS TECH	W, 3-0
Nov. 4	•	(rv) OKLAHOMA	L, 0-3
Nov. 7	•	at Texas A&M	6:30 p.m.
Nov. 11	•	COLORADO	7 p.m.
Nov. 14	•	at Kansas	11 a.m.
Nov. 18	•	at Nebraska	7 p.m.
Nov. 21	•	TEXAS	7 p.m.
Nov. 25	•	at Missouri	6:30 p.m.

^ - Flo Hyman Invitational (Houston, Texas) T-1st
 # - Holiday Inn & Suites Baylor Classic (Waco, Texas) 1st
 ~ - Comcast Challenge (Albuquerque, N.M.) 1st
 • - Big 12 Conference games

LIVE STATS: www.BaylorBears.com
LIVE RADIO: www.BaylorBears.com
 Todd Zeidler, play-by-play
TV: None
MEDIA RELATIONS: Todd Zeidler, volleyball SID
 e: todd_zeidler@baylor.edu
 c: 254-644-3458

Follow Baylor volleyball on Twitter @BaylorVball
Follow Baylor Athletics on Twitter @BaylorAthletics and on Facebook at www.facebook.com.



SCOUTING THE AGGIES...

- The Aggies are led by 17th-year head coach Laurie Corbelli, who has compiled an impressive 343-158 record, including 13 NCAA postseason appearances.
- Texas A&M has been receiving votes in each poll released this season and is currently ranked 23rd after moving into the top 25 after defeating then-No. 17 Baylor earlier this season.
- The Aggies possess one of the most powerful offenses in the nation, ranking first in the nation in kills per set at 14.81, first in assists at 14.05, and 23rd in hitting percentage, entering the week at .261.
- Setter Kristen Schevikhoven ranks second in the Big 12 and 21st in the NCAA with 10.98 assists per set.
- Three Aggies average more than 2.9 kills per set with Sarah Ammerman leading the way at 4.16, while Jennifer Banse averages 3.38 and Mary Batis averages 2.91.
- The Aggie back row has been equally spectacular, ranking 39th in the NCAA with 16.4 digs per set. Three players have more than 200 digs with 228 from Tori Mellinger and 217 from Ammerman.
- Of TAMU's top six leading blockers, none average more than 0.80 per set, totaling 121.5 blocks in '09.

LAST TIME AGAINST TEXAS A&M...

Texas A&M won more crucial points than No. 17 Baylor and took home a 3-1 victory over the Bears in front of a program-record crowd of 3,022 on Saturday night inside the Ferrell Center. Baylor took the Aggies to the final points in the second and fourth sets, but came out on the wrong end of the deciding points. The Bears had four set-points in the second set before A&M took the set, then closed to within one in the fourth set, but an A&M kill finished off the match.

Junior Ashlie Christenson paced the Bear attack with a career-high 20 kills in the match on 48 total attempts with only two errors (.375). Middle blockers Torri Campbell and Anna Breyfogle each turned in solid performances on offense with 12 kills apiece. Katie Sanders added eight and Taylor Barnes and Ashley Byrd each had four. Barnes dished out her third-highest assist total of the season with 51.

LAST TIME OUT...

Oklahoma got 18 kills from Francie Ekwerekwu to help sweep No. 20 Baylor 3-0 (25-22, 25-20, 25-22) at the Ferrell Center on Wednesday night.

Three Sooners reached double figures in kills, led by Ekwerekwu, with Suzy Boulavsky totaling 13 and Caitlin Higgins getting 10. The Sooners hit .311 (52-14-122) to just .254 for Baylor (45-14-122).

The Bears were led by Katie Sanders who had 10 kills and seven digs on the night. Setter Taylor Barnes had 31 assists and a team-high 10 digs to go along with eight kills and a block. Caitlyn Trice also had 10 digs for the Bears and Torri Campbell had a match-high five blocks.

PLAYERS TO WATCH



KATIE SANDERS

6-0 • Senior • Outside Hitter
 Katy, Texas (Cinco Ranch)

Notable:

- Led BU in kills in 14 times in 2009
- Has recorded 13 double-doubles, including seven in Big 12 play
- Leads BU in kills (276) and is 2nd in digs (270)

22



TAYLOR BARNES

5-11 • Senior • Setter
 Arlington, Texas (Martin)

Notable:

- Had eight kills and no errors in 13 attempts against OU (.615)
- Leads Big 12 in service aces per set at 0.44, including six vs. Texas Tech
- Fourth in Big 12 in assists (10.98)

9

quick facts

GENERAL INFORMATION

Location	Waco, Texas
Chartered	1845 by the Republic of Texas
Enrollment	14,614
Affiliation	NCAA Division I
Conference	Big 12
Nickname	Bears
Colors	Green & Gold
Home Facility	Ferrell Center (10,284; 6,000 for volleyball)
Year Opened	1988
Press Row Phone	(254) 749-1659
Interim President	David E. Garland (Oklahoma Baptist, 1970)
Faculty Athletic Representative	Mike Rogers (Texas Tech, 1972)
Director of Athletics	Ian McCaw (Laurentian, 1985)
Associate Athletic Director/Sport Supervisor	Tom Hill
Associate AD/Business, SWA	Nancy Post

COACHING STAFF

Head Coach	Jim Barnes
Alma Mater	McNeese State, 1994
Career Record	259-185 (14th Season)
Record at Baylor	96-87 (Sixth Season)
Associate Coach	Bryan Bunn (UTSA, 1988)
Assistant Coach	Candice O'Brien (Buffalo, 1997)
Volunteer Assistant Coach	Anthony Avillanoza (Baylor, 2006)
Graduate Assistant	Diego Castaneda
Athletic Trainer	Kelly Bare (Arkansas State, 2002)

TEAM INFORMATION

2008 Record	18-13
2008 Big 12 Record (Finish)	9-11 (Sixth)
2008 Postseason	None
2008 Final AVCA Ranking	None
Letterwinners Returning/Lost	11/1
Starters Returning/Lost	7/0
Newcomers	4

Top Returnees

Taylor Barnes, Sr., S - 10.32 A/set, 2.56 D/set, 0.43 SA/set in '08
Anna Breyfogle, Sr., MB - 2.66 K/set, 1.39 D/set, 1.45 B/set in '08
Katie Sanders, Sr., OH - 3.50 K/set, 3.02 D/Set, 0.58 B/set '08

Letterwinners Returning (11)

*S Taylor Barnes, *MB Anna Breyfogle, *MB Ashley Byrd, *OH Ashlie Christenson, *L/DS Allison King, DS Jordan Rice, S Brittany Ridenour, *OH Katie Sanders, *MB/RS Briana Tolbert, DS Caitlyn Trice, OH Qian Zhang
*starter

Letterwinner Lost (1)

DS/OH Amanda Elliott

Newcomers (4)

OH Zoe Adom, MB/RS Torri Campbell, MB Elizabeth Graham,
OH/DS Kiley Sherman

HOW THEY STACK UP...

(Stats thru Nov. 6)

	BAYLOR	TEXAS A&M
ATTACK PCT.	.249	.260
KILLS/SET	14.08	14.81
ASSISTS/SET	13.25	14.05
ACES	104	95
SERVE RECEIVE ERR	76	41
DIGS/SET	16.10	16.44
TOTAL BLOCKS	224.0	121.5

CAMPBELL EARNS BIG 12 HONOR

Campbell registered a career-high 18 kills against No. 9 Iowa State, then had 10 more in a win over Texas Tech to average 3.50 kills per set last week. She paced the Bears in kills and hitting percentage (.290), while leading the Big 12 in blocks with 1.25 per set. At ISU, Campbell tallied nine block assists in the five-set match along with a dig. The Amarillo, Texas middle blocker had just two errors in 20 attempts against the Red Raiders while contributing a dig and block assist to BU's 3-0 victory.

Campbell became the third Baylor player to earn a weekly Big 12 honor this season. Senior setter Taylor Barnes was the Big 12 Offensive Player of the week on Sept. 28, after posting a triple-double against then No. 11 Iowa State. Middle blocker Anna Breyfogle was named the Big 12 Defensive Player of the Week on Aug. 31 after put together a string of games which included a school-record 12 blocks in a three-set match.

BARNES COMING UP ACES

Baylor senior Taylor Barnes tied a school record for aces in a five-set match with six against Texas Tech last Saturday, and in the process broke the Big 12 and Baylor all-time records for service aces in a career. Barnes' total, now at 196, is one better than Cory Sivertson's Baylor record of 195, and five better than Heather Smith's Big 12-era (1996-present) record of 191 during her career at Texas Tech.

20-WIN HISTORY

Sitting at 19-5, with one more win the Bears will have their first 20-win season since tying a school-record with 26 wins during the 1999 season. Baylor has won at least 20 matches seven times in its volleyball history, which spans back to 1978. The Bears won 20 matches in each of the first three seasons (1978-80), but played at least 40 matches each of those years.

The Bears have won at least 20 matches just one time since joining the Big 12 in 1996, but with 19 wins so far this season have had more wins than any of current head coach Jim Barnes' first five seasons at the helm.

A CAREER NIGHT

Last Wednesday's five-set marathon against No. 9 Iowa State featured career-high numbers for four Baylor players. Freshman Torri Campbell set her personal bests in three categories: kills (18), attempts (49) and blocks (nine).

Sophomore libero Allison King popped up 32 digs, while back-row teammate Caitlyn Trice tied her career best with 17 digs. Junior transfer Elizabeth Graham set a new career-high for the second week in a row with seven blocks. Last week, she had a career-best 14 kills against Kansas State.

DEFENSE, DEFENSE, DEFENSE

Baylor's defense has proved to be one of its strong points this season, holding opponents to a .160 hitting percentage.

The Bears have racked up 224.0 blocks for an average of 2.5 per set, and 1,417 digs for an average of 16.1 per set. Baylor racked up season-highs in blocks and digs at Iowa State with 15.5 blocks and 104 digs. The block total was the highest since Baylor had 16.0 at Colorado on Oct. 20, 2007. The Bears dig total of 104 was the most since racking up 104 against Oklahoma last season.

SENIOR TRIO UP AND OVER 1,000

Senior Anna Breyfogle became just the 12th player in program history to record 1,000 kills. She entered the Sept. 26th match against Kansas needing just four kills to reach the mark, and took care of it with four in the first set.

Also known for her defense, Breyfogle became just the third player in school history to rack up 1,000 kills and 500 blocks.

Senior Taylor Barnes, who already has over 4,000 assists, kicked over the 1,000-dig plateau against Oklahoma on Oct. 17. Barnes and Cory Sivertson are the only two players in Baylor history to achieve 4,000 assists and 1,000 digs.

Senior Katie Sanders also knocked over the 1,000-dig mark at Kansas State on Oct. 24. With her 1,400-plus career kills, Sanders is the seventh player all-time at Baylor with over 1,000 kills and 1,000 digs.

RACKIN' UP RECORDS

During the 2009 season, Baylor seniors Taylor Barnes and Katie Sanders are making their mark in the career records at BU. Barnes moved to the top of the list for career assists in the rally-scoring era (2001-present) with 4,878, while also ranking

big 12 standings

(Thru Nov. 6)	BIG 12	PCT.	OVERALL	PCT.
Texas	13-1	.929	18-1	.947
Iowa State	12-2	.857	20-3	.870
Nebraska	10-4	.714	17-6	.739
Oklahoma	9-5	.643	16-7	.696
Baylor	8-6	.571	19-6	.760
Texas A&M	7-6	.538	14-7	.667
Missouri	6-7	.462	15-10	.600
Kansas	5-8	.385	13-10	.565
Kansas State	3-10	.231	9-14	.391
Colorado	1-13	.071	6-17	.261
Texas Tech	0-12	.000	2-19	.095

THIS WEEK IN THE BIG 12

Wed., Nov. 4

No. 8 Iowa State 3, No. 2 Texas 2
 Kansas State 3, No. 23 Texas A&M 2
 No. 10 Nebraska 3, Missouri 0
 Oklahoma 3, No. 20 Baylor 0
 Kansas 3, Colorado 0

Sat., Nov. 7

Colorado at Texas Tech 4 p.m.
 Texas at Missouri 5 p.m.
 Baylor at Texas A&M 6:30 p.m.
 Kansas at Oklahoma 7 p.m.
 Nebraska at Iowa State 8 p.m.

Sun., Nov. 8

Texas Tech at Kansas State 6 p.m.

LAST WEEK IN THE BIG 12

Tue., Oct. 27

Kansas 3, UMKC 0

Wed., Oct. 28

No. 9 Iowa State 3, No. 22 Baylor 2
 Missouri 3, Kansas State 0
 No. 8 Nebraska 3, Texas Tech 0
 Oklahoma 3, Colorado 0
 No. 2 Texas 3, No. 25 Texas A&M 0

Fri., Oct. 30

No. 2 Texas 3, No. 8 Nebraska 0

Sat., Oct. 31

Oklahoma 3, Kansas State 1
 No. 9 Iowa State 3, Colorado 0
 No. 25 Texas A&M 3, Kansas 1
 Missouri 3, SIU Edwardsville 0
 No. 22 Baylor 3, Texas Tech 0

first in service aces all-time with 196.

Sanders took over BU's rally-scoring era career attempts record with 4,078, and broke the rally-era record for kills with 1,445 in her career.

MOVIN' UP IN THE BOOKS

Senior Taylor Barnes is now in first place all-time at BU with her 196th career service ace, breaking Cory Sivertson's record of 195. Barnes also moved into second in career set assists with 4,878. She ranks behind only Dana Chuha's BU-leading 4,955.

Senior Anna Breyfogle is blocking her way to the top of the BU charts as well, sitting third all-time with 577 total blocks. She is ranked sixth in total blocks and fifth in block assists (516) in Big 12 history.

FILL IT UP

On Oct. 10 against Texas A&M, Baylor played in front of the largest volleyball crowd in program history at 3,022. The crowd shattered the previous record of 2,111 by nearly 1,000 people. That record set on Oct. 27, 1993 against Texas had stood for nearly 16 full seasons before Bear fans packed the Ferrell Center against the Aggies.

LEAGUE LEADERS

Middle blocker Anna Breyfogle leads the Big 12 in blocks per set (1.38). The Buda, Texas native has totaled 117 blocks on the season, 21 more than any other blocker in the Big 12. Breyfogle also has the highest single-match block total in the league, when she had 12 against Houston earlier this season.

Taylor Barnes, who led the Big 12 in service aces per set in 2008, is first in that category with 0.44 per set in 2009, including three in one set against Texas A&M on Oct. 10, and Iowa State on Oct. 24. Barnes also had a season-high six against Texas Tech on Oct. 31.

DIGGIN' IT

Sophomore libero Allison King has been a model of consistency for the Bears' defense this season. The only Bear to play every set, King has recorded double-digit digs in 22 of the Bears' 25 matches. In her only two matches short of double figures, King had nine digs in a sweep over New Orleans, and nine in a sweep over Texas Tech.

The Carrollton, Texas native has recorded 20 digs five times this season, with most recent at Iowa State on Oct. 28, where she had a career-high 32. That total marked just the eighth time in Baylor history a player reached the 30-dig plateau, and was the fifth highest single-match total all-time at BU.

IN THE POLLS

After achieving the high ranking in school history at No. 17, the Bears moved up to 20th in the latest AVCA poll released on Monday, Nov. 2.

Entering the rankings on Sept. 14th marked the first time since the 2001 season that the Bears were in the top 25, climbing as high as 20th. The Bears first cracked the top 25 in 1999, finishing the season 20th. Baylor then entered the 2000 season ranked 21st and climbed as high as 19th.

BAYLOR VS. '09 RANKED OPPONENTS

Baylor is now 2-3 overall against ranked opponents after dropping a 3-2 match to No. 9 Iowa State on Oct. 28. The Bears beat then-No.11 Iowa State in a 3-0 sweep on Sept. 23. It marked the highest ranked team Baylor has ever defeated.

The Bears win over 24th-ranked Purdue in the title game of the Holiday Inn & Suites Baylor Classic was the first over a ranked opponent since a five-set win at the Ferrell Center against 16th-ranked Missouri on Oct. 27, 2006. Baylor had lost 17 consecutive games against ranked opponents coming into the Purdue match.

MAKE IT 11!

With three wins at the Comcast Challenge, Baylor ran its winning streak to a school-record 11 matches before losing to No. 2 Texas on Sept. 16. The streak set the record for most wins to open a season and ties the record for overall winning streak.

The previous record of eight wins to open a season had been accomplished three times in school history with the most recent coming last season. The overall winning streak record was set in 2006 when Barnes' crew ripped off 11 in a row.

double trouble

Baylor's double-doubles this season

Katie Sanders **Total: 13**

Aug. 28 at University of Houston	(12 kills - 12 digs)
Sept. 1 at TCU	(13 kills - 14 digs)
Sept. 4 vs. UCF	(12 kills - 10 digs)
Sept. 5 vs. Purdue	(20 kills - 10 digs)
Sept. 8 vs. Texas State	(13 kills - 11 digs)
Sept. 11 vs. New Mexico	(14 kills - 15 digs)
Sept. 19 vs. Kansas State	(11 kills - 17 digs)
Sept. 30 vs. Missouri	(12 kills - 11 digs)
Oct. 3 at Colorado	(12 kills - 13 digs)
Oct. 14 vs. Nebraska	(12 kills - 10 digs)
Oct. 17 at Oklahoma	(12 kills - 10 digs)
Oct. 24 at Kansas State	(14 kills - 18 digs)
Oct. 31 vs. Texas Tech	(12 kills - 14 digs)

Taylor Barnes **Total: 8**

Sept. 1 at TCU	(43 assists - 12 digs)
Sept. 23 vs. Iowa State	(38 assists - 10 kills - 11 digs)
Sept. 30 vs. Missouri	(34 assists - 10 digs)
Oct. 10 vs. Texas A&M	(51 assists - 14 digs)
Oct. 17 at Oklahoma	(50 assists - 12 digs)
Oct. 24 at Kansas State	(54 assists - 14 digs)
Oct. 28 at Iowa State	(50 assists - 19 digs)
Nov. 4 vs. Oklahoma	(31 assists - 10 digs)

Anna Breyfogle **Total: 1**

Aug. 28 vs. University of Houston	(12 kills - 12 blocks)
-----------------------------------	------------------------

Allison King **Total: 1**

Oct. 24 at Kansas State	(18 digs - 10 assists)
-------------------------	------------------------

CONFERENCE PLAYERS OF THE WEEK

OFFENSE

Aug. 31:	Destinee Hooker, Texas, OH, Sr.
Sept. 8:	Ashley Engle, Texas, S, Sr.
Sept. 14:	Victoria Henson, Iowa State, OH, Jr.
Sept. 21:	Destinee Hooker, Texas, OH, Sr.
Sept. 28:	Taylor Barnes, Baylor, S, Sr.
Oct. 5:	Destinee Hooker, Texas, OH, Sr.
Oct. 12:	Victoria Henson, Iowa State, OH, Jr.
Oct. 26:	Suzy Boulavsky, Kansas State, RS, So.
Oct. 19:	Paola Ampudia, Missouri, OH, Jr.
Nov. 2:	Destinee Hooker, Texas, OH, Sr.

DEFENSE

Aug. 31:	Anna Breyfogle, Baylor, MB, Sr.
Sept. 8:	Ashley Mass, Iowa State, L, Jr.
Sept. 14:	Ashley Mass, Iowa State, L, Jr.
Sept. 21:	María Fernanda, Oklahoma, L, Fr.
Sept. 28:	Ashley Mass, Iowa State, L, Jr.
Oct. 5:	Caitlyn Vann, Missouri, L, Jr.
Oct. 12:	Kaylee Manns, Iowa State, S, Sr.
Oct. 19:	Kayla Banwarth, Nebraska, L, Jr.
Oct. 26:	Ashley Mass, Iowa State, L, Jr.
Nov. 2:	Ashley Mass, Iowa State, L, Jr.

NEWCOMER

Aug. 31:	Alisia Kastmo, Texas A&M, MB, Fr.
Sept. 8:	Hannah Werth, Nebraska, OH, Fr.
Sept. 14:	Paola Ampudia, Missouri, OH, Jr.
Sept. 21:	Paola Ampudia, Missouri, OH, Jr.
Sept. 28:	Hannah Werth, Nebraska, OH, Fr.
Oct. 5:	Maria Fernanda, Oklahoma, L, Fr.
Oct. 12:	Hannah Werth, Nebraska, OH, Fr.
Oct. 19:	Hannah Werth, Nebraska, OH, Fr.
Oct. 26:	Paola Ampudia, Missouri, OH, Jr.
Oct. 26:	Jamie Straube, Iowa State, MB, Fr.
Nov. 2:	Torri Campbell, Baylor, MB, Fr.

LIKE A BROKEN RECORD

Anna Breyfogle continued her legacy as one of the best blockers in BU history setting a school record for blocks in a three-set match with 12 against Houston in the Bears second match of the season. The senior recorded one solo and 11 block assists in a three-set sweep of the Cougars.

With 23 total blocks in nine sets at the Flo Hyman Invitational, Breyfogle, who led the Big 12 in blocks per set in 2008, averaged 2.56 bps in the team's first three games. Comparatively, in 2008, she averaged 1.45.

TOURNAMENT CHAMPS

Baylor won all three tournaments they entered this season, most recently taking the Comcast Challenge title at the University of New Mexico, defeating the host, as well as Pittsburgh and Cal State Fullerton.

Baylor won all three games at the Holiday Inn & Suites Baylor Classic on Sept. 4-5. The Bears opened with sweeps of UCF and UTSA, before handing 24th-ranked Purdue a five-set loss in the tournament title game. For their efforts, Katie Sanders was named the tournament's Most Valuable Player, while teammates Taylor Barnes and Ashley Byrd earned all-tournament team honors.

With a perfect 3-0 record at the Flo Hyman Invitational hosted by the University of Houston, the Bears claimed co-tournament champion honors. Baylor shared the title with the University of Indiana, as the two did not meet.

TOURNAMENT HONORS

Three Bears received tournament honors at the Comcast Challenge on Sept. in Albuquerque, N.M., led by tournament Most Valuable Player Taylor Barnes. The senior setter racked up 117 assists in three tournament matches, along with 11 kills, 23 digs, and six blocks. Barnes narrowly missed a triple-double against New Mexico with eight kills, 53 assists and eight digs.

Middle blocker Anna Breyfogle and outside hitter Ashlie Christenson were named to the all-tournament team for their performances. Breyfogle was a force at the net with at least six blocks in all three matches, and totaling 31 kills with a career-high 21 against New Mexico. Christenson was also a go-to option on offense with double-digit kills in two of the three matches, and totaling eight blocks.

OUT OF THE GATES

In the Jim Barnes era, the Bears have become accustomed to starting the season off on the right foot. After losing the season-opener in Barnes' first season, Baylor has won its first match of the season each of the last five years with a win to open 2009 over Southeastern Louisiana.

In 2008, Barnes' crew ripped off eight consecutive wins to open the season, losing just three sets along the way. That streak included a 13-set winning streaking, starting with the last two sets at Texas State and ending with a third-set loss against Rice.

Winning 17 of its first 18 matches, Baylor got off to the best start in school history. The 1999 version of the Bears began the season 13-1, but suffered back-to-back losses to ranked teams the following week.

ALL-BIG 12 PRESEASON TEAM

For the second-straight season, Taylor Barnes and Anna Breyfogle were named to the preseason All-Big 12 team.

Barnes, a senior setter, was named to the preseason team for the third-straight year. In 2008, she parlayed her preseason accolade into All-Big 12 First Team postseason honors, leading the Big 12 in service aces per set. Barnes also earned all-AVCA central region honors and ranked fourth in the Big 12 with 10.32 assists per set.

Breyfogle, a senior middle blocker, earned the preseason honor for the second-straight year. Like Barnes, Breyfogle also earned both All-Big 12 First Team and all-AVCA central region honors in 2008. The Buda, Texas, native led the Big 12 in blocks per set with 1.45, while ranking seventh in the nation in that category.

ADDITIONS AND SUBTRACTIONS

Baylor lost just one letterwinner from its 2008 squad, while adding the three recruits that make up the 14th-ranked class in the nation, according to *Prepvolleyball.com*.

Amarillo's (Texas) Torri Campbell, ranked 30th in the country, enters Baylor as its second-highest ranked recruit in program history. Zoe Adom, an ultra-athletic outside hitter from Euless, Texas, and Kiley Sherman, a versatile outside and defensive player from Oswego, Ill., round out the class for the Bears.

LIVE ON THE WEB

Don't forget to check out live stats on Gametracker on BaylorBears.com. Baylor's official website will also feature a free live audio webcast with veteran play-by-play announcer Larry Little at home, and Todd Zeidler on the road.

in the polls

AVCA PRESEASON TOP 25 COACHES POLL (as of Nov. 1)

School	Pts.	Rec.	#
1 Penn State (50)	1490	24-0	1
2 Texas (10)	1450	18-0	2
3 Hawai'i	1378	20-2	3
4 Washington	1297	19-2	5
T-5 Illinois	1174	18-3	6
T-5 Stanford	1174	15-6	4
7 UCLA	1105	18-6	11
8 Iowa State	1079	19-3	9
9 Florida	1006	18-3	10
10 Nebraska	975	16-6	8
11 Kentucky	898	22-2	12
12 Minnesota	840	17-7	7
13 California	742	13-8	14
14 Oregon	729	15-5	15
15 Michigan	641	19-6	13
16 Florida State	599	21-2	17
17 Southern California	555	15-8	16
18 Arizona	510	16-6	18
19 LSU	393	18-5	20
20 Baylor	296	19-5	22
21 Saint Louis	229	17-6	24
22 San Diego	211	15-5	19
23 Texas A&M	139	14-6	25
24 Washington State	96	16-6	21
T-25 Northern Iowa	82	22-2	NR
T-25 St. Mary's (Calif.)	82	16-4	NR

Others Receiving Votes and appearing on two or more ballots: UC Santa Barbara 63; Notre Dame 55; UC Irvine 46; Dayton 35; Florida International 23; Colorado State 17; Oregon State 16; Michigan State 15; Long Beach State 14; Ohio State 14; Tennessee 13; Duke 12; Pepperdine 7; **Oklahoma 6**

Five schools were listed on only one ballot for a total of 12 points.

Dropped Out: UC Irvine (23)

Baylor opponents listed in **bold italics**.

2009 BIG 12 PRESEASON POLL (first-place votes)

1.	Texas (8)	98
2.	Nebraska (3)	93
3.	Iowa State	81
4.	Texas A&M	68
5.	BAYLOR	63
6.	Kansas State	57
7.	Oklahoma	46
8.	Missouri	38
9.	Kansas	30
10.	Colorado	20
11.	Texas Tech	11

MATCH-BY-MATCH LEADERS

MATCH	KILLS	ATTACKS	ASSISTS	DIGS	ACES	BLOCKS	POINTS
vs. SE Louisiana	Sanders - 9	Sanders -19	Barnes - 28	King - 15	Barnes - 2	Breyfogle - 7	Breyfogle - 12.0
at Houston	Breyfogle - 12	Breyfogle - 23	Barnes - 25	King - 14	Rice - 1	Breyfogle - 12	Breyfogle - 18.5
vs. New Orleans	Sanders - 12	Sanders - 40	Barnes - 35	Sanders - 12	Barnes - 2	Breyfogle - 4	Sanders - 14.0
at TCU	Breyfogle - 16	Sanders - 58	Barnes - 43	Three with - 14	Breyfogle - 3	Tolbert - 3	Breyfogle - 20.5
UCF	Sanders -12	Sanders - 21	Barnes - 34	King - 11	Barnes - 2	Two with - 4	Sanders - 12.0
UTSA	Sanders - 11	Sanders - 31	Barnes - 20	King - 22	Two with - 2	Three with - 3	Sanders - 12.5
Purdue	Sanders - 20	Sanders -56	Barnes - 51	King - 20	Barnes - 3	Breyfogle - 5	Sanders - 21.5
Texas State	Sanders - 13	Sanders - 30	Barnes - 28	Two with - 11	Rice - 2	Campbell - 5	Sanders - 14.0
vs. Pittsburgh	Christenson - 11	Sanders - 23	Barnes - 35	King - 14	Two with - 1	Breyfogle - 7	Christenson - 13.5
at New Mexico	Breyfogle - 21	Sanders - 47	Barnes - 53	Two with - 18	Trice - 1	Breyfogle - 7	Breyfogle - 24.5
vs. Cal State Fullerton	Christenson - 8	Christenson - 25	Barnes - 29	King - 13	Two with - 3	Breyfogle - 6	Breyfogle - 10.5
at Texas	Christenson - 8	Breyfogle - 24	Barnes - 30	King - 11	Barnes - 2	Breyfogle - 5	Breyfogle - 9.0
Kansas State	Christenson - 14	Christenson - 34	Barnes - 39	King - 19	Two with - 2	Breyfogle - 6	Christenson - 16.0
Iowa State	Christenson - 11	Sanders - 45	Barnes - 38	King - 17	King - 2	Three with - 6	Campbell - 13.5
Kansas	Breyfogle - 12	Sanders - 21	Barnes - 34	King - 16	Two with - 2	Breyfogle - 5	Breyfogle - 15.5
Missouri	Sanders - 12	Sanders - 30	Barnes - 34	Sanders - 11	Two with - 2	Two with - 4	Sanders - 14.5
at Colorado	Sanders - 12	Sanders - 29	Barnes - 41	King - 18	Two with - 1	Three with - 2	Sanders - 13.0
at Texas Tech	Sanders - 13	Sanders - 29	Barnes - 42	King - 9	Breyfogle - 1	Breyfogle - 5	Breyfogle - 15.0
Texas A&M	Christenson - 20	Christenson - 48	Barnes - 51	King - 23	Barnes - 3	Breyfogle - 7	Christenson - 20.0
Nebraska	Sanders - 12	Sanders - 46	Barnes - 30	King - 15	Trice - 2	Campbell - 4	Sanders - 13.0
at Oklahoma	Sanders - 12	Sanders - 54	Barnes - 50	King - 23	Four with - 1	Campbell - 6	Campbell - 15.0
at Kansas State	Three with - 14	Sanders - 42	Barnes - 54	Two with - 18	Sanders - 2	Breyfogle - 7	Graham - 17.0
at Iowa State	Campbell - 18	Sanders - 52	Barnes - 50	King - 32	Barnes - 3	Campbell - 9	Campbell - 22.5
Texas Tech	Sanders - 12	Sanders - 26	Barnes - 41	Sanders - 14	Barnes - 6	Breyfogle - 5	Breyfogle - 14.0
Oklahoma	Sanders - 11	Sanders - 25	Barnes - 31	Two with - 10	Two with - 1	Campbell - 5	Sanders - 13.0
at Texas A&M							
Colorado							
at Kansas							
at Nebraska							
Texas							
at Missouri							

BEARS IN THE RANKINGS

BIG 12 STATISTICAL LEADERS - TOP 10 (thru Nov. 6)

TEAM	HITTING PERCENTAGE
1. Texas	.316
3. Baylor	.249

OPP.	HITTING PERCENTAGE
1. Iowa State	.142
5. Baylor	.160

ASSISTS
1. Texas A&M14.05
3. Baylor13.25

KILLS
1. Texas A&M14.81
5. Baylor14.08

BLOCKS
1. Texas2.91
3. Baylor2.55

SERVICE ACES
1. Missouri1.31
3. Baylor1.18

DIGS
1. Iowa State18.17
4. Baylor16.10

NCAA STATISTICAL LEADERS - TOP 50 (thru Nov. 1)

TEAM	ASSISTS
1. Texas A&M14.16	
18. Baylor13.22	

BLOCKS
1. Idaho3.11
31. Baylor2.55

HITTING PERCENTAGE
1. Penn State412
38. Baylor249

KILLS
1. Texas A&M14.96
25. Baylor14.05

INDIVIDUAL HITTING PERCENTAGE

1. Kelsey Chipman, KSU364
2. Anna Breyfogle, BU348

KILLS
1. Destinee Hooker, UT4.83
No BU player in top 10

ASSISTS
1. Kaylee Manns, ISU11.97
5. Taylor Barnes, BU10.87

SERVICE ACES
1. Taylor Barnes, BU0.44
2. Destinee Hooker, UT0.39

BLOCKS
1. Anna Breyfogle, BU1.38
2. Barbara Conceicao, TTU1.30

DIGS
1. Ashley Mass, ISU5.36
5. Allison King, BU4.47

POINTS
1. Destinee Hooker, UT5.74
10. Katie Sanders, BU3.61

INDIVIDUAL ACES PER SET

1. Ashley Herman, Delaware State0.65
26. Taylor Barnes, Baylor0.45

ASSISTS
1. Kendall Bateman, USC12.23
35. Taylor Barnes, Baylor10.89

BLOCKS
1. Amanda Gil, UCLA1.61
13. Anna Breyfogle, Baylor1.41

HITTING PERCENTAGE
1. Arielle Wilson, Penn State569
44. Anna Breyfogle, Baylor358

record breakdown

	OVERALL	BIG 12
Overall	19-6	8-6
vs. Ranked Opponent	2-3	1-3
Home	9-3	5-3
Away	6-3	3-3
Neutral	4-0	-
Matches after a win	15-4	5-4
Matches after a loss	3-2	3-2
Three-set matches	14-3	6-3
Four-set matches	2-1	2-1
Five-set matches	3-2	0-2
Set 1	18-7	8-6
Set 2	17-8	8-6
Set 3	19-6	9-5
Set 4	4-4	4-1
Set 5	3-2	0-2
When hitting .250 or better	15-2	6-2
When hitting below .250	4-4	2-4
When opponent hits .250 or better	1-4	0-4
When opponent hits below .250	18-2	8-2
When having higher attack pct.	18-0	8-0
When having lower attack pct.	1-6	0-6
When having more kills	17-0	8-0
When having fewer kills	2-6	0-6
When having same # of kills	-	-
At least three players with 10+ kills	5-2	2-2
Opp. with 3+ players with 10+ kills	2-5	0-5
Had three or more .300 hitters	12-2	7-2
Opp. had three or more .300 hitters	1-4	0-4
Had 30 or more kills	19-6	8-6
Allowed 30 or more kills	15-6	8-6
Had 50 or more kills	8-3	5-3
Allowed 50 or more kills	3-5	0-5
When having more aces	11-2	6-2
When having fewer aces	4-2	0-2
When having same # of aces	4-2	2-2
When having more aces than errors	2-0	1-0
When having more errors than aces	15-4	6-3
When having more digs	15-0	8-0
When having fewer digs	3-6	0-6
When having same # of digs	1-0	-
When having more blocks	13-3	5-3
When having fewer blocks	5-3	2-3
When having same # of blocks	1-0	1-0
When winning Set 1	17-1	7-1
When losing Set 1	2-5	1-5
Lead 2-0	14-0	6-0
Down 0-2	0-4	0-4
Tied 1-1	5-2	2-2
Leading 2-1	4-0	2-0
Down 2-1	1-3	0-3
August	3-0	-
September	12-1	4-1
October	4-4	4-4
November	0-1	0-1
Monday	-	-
Tuesday	2-0	-
Wednesday	3-4	2-4
Thursday	-	-
Friday	5-0	-
Saturday	9-2	6-2
Sunday	-	-
Wearing White	8-3	4-3
Wearing Green Long-Sleeve	7-3	2-3
Wearing Green Short-Sleeve	3-0	2-0

WHEN WAS THE LAST TIME...

THE LAST TIME A BAYLOR PLAYER...

Had 20 or more kills:
Had 30 or more kills:
Had 35 or more kills:
Had 60 or more attempts:
Had 70 or more attempts:
Had 80 or more attempts:
Had 70 or more assists:
Had 80 or more assists:
Had 90 or more assists:
Had 100 or more assists:
Had 20 or more digs:
Had 30 or more digs:
Had 10 or more blocks:
Had a triple-double:
Had a quadruple-double:

Ashlie Christenson (20) vs. Texas A&M; Oct. 10, 2009
Tisha Schwartz (32) at Iowa State; Oct. 5, 2002
Stevie Nicholas (36) at Kansas; Oct. 20, 2001
Katie Sanders (60) at Oklahoma; Nov. 2, 2008
Katie Sanders (83) vs. Kansas State; Nov. 10, 2007
Katie Sanders (83) vs. Kansas State; Nov. 10, 2007
Dana Chuha (71) vs. Missouri; Oct. 24, 2001
Dana Chuha (88) at Texas Tech; Oct. 21, 2000
Dana Chuha (94) vs. Temple; Dec. 3, 1999**
Dana Chuha (101) vs. Texas; Nov. 3, 1999*
Allison King (32) at Iowa State, Oct. 28, 2009
Allison King (32) at Iowa State, Oct. 28, 2009
Anna Breyfogle (12) vs. Houston; Aug. 28, 2009
Taylor Barnes (10k-11d-38a) vs. Iowa State, Sept. 23, 2009
Cory Sivertson (13k-62a-23d-12b) vs. N. Iowa; Dec. 5, 1993

THE LAST TIME BAYLOR

Beat a ranked opponent:
Beat a ranked opponent at home:
Beat a ranked opponent on the road:
Beat a ranked opponent at a neutral site:
Opponent with less than 10 points in a 25-pt. set:
Scored fewer than 10 points in a 25-pt. set:
Held an opponent under .100 hitting percentage:
Won five consecutive matches:
Won 10 consecutive matches:
Won 15 consecutive sets:
Won 17 consecutive sets:
Had 18 kills in a set:
Had 20 kills in a set:
Had 90 kills in a match:
Had 100 kills in a match:
Had 110 kills in a match:
Had 200 attacks in a match:
Had 225 attacks in a match:
Had 250 attacks in a match:
Had an attacking percentage of .350:
Had an attacking percentage of .400:
Had an attacking percentage of .450:
Had an attacking percentage of .300 in five sets:
Had 80 digs in a match:
Had 100 digs in a match:
Had 125 digs in a match:
Had 150 digs in a match:
Had 10 service aces in a match:
Had 15 service aces in a match:
Had 15 total blocks in a match:
Had 20 total blocks in a match:

Sept. 23, 2009 vs. No. 11 Iowa State (3-0)
Sept. 23, 2009 vs. No. 11 Iowa State (3-0)
Oct. 20, 1999 at Kansas State (3-1)
Dec. 4, 1993 vs. Oregon State (3-1)
Sept. 4, 2009 vs. UCF (9)
Sept. 19, 2009 vs. KSU (.061)
Sept. 19, 2009-Oct. 7, 2009 (6)
Aug. 28, 2009-Sept. 12, 2009 (11)*
Sept. 19, 2009 - Oct. 7, 2009 (17)
Sept. 19, 2009 - Oct. 7, 2009 (17)*
Oct. 31, 2009 vs. Texas Tech (18 - Set 1)
Oct. 24, 2009 at Kansas State (20 - Set 4)
Sept. 1, 2004 at UT-Arlington (92 - 5 set)
Dec. 3, 1999 vs. Temple (105 - 4 set)
Nov. 3, 1999 vs. Texas (111 - 5 set)
Oct. 28, 2009 at Iowa State (236 - 5 sets)
Oct. 28, 2009 at Iowa State (236 - 5 sets)
Oct. 21, 2000 at Texas Tech (259 - 5 set)
Sept. 4, 2009 vs. UCF (.434 - 3 sets)
Sept. 4, 2009 vs. UCF (.434 - 3 sets)
Sept. 12, 2003 at Jacksonville (.451 - 3 sets)
Nov. 19, 2008 at Texas Tech (.331)
Oct. 28, 2009 at Iowa State (104 - 5 sets)
Oct. 28, 2009 at Iowa State (104 - 5 sets)
Nov. 3, 1999 vs. Texas (165 - 5 sets)
Nov. 3, 1999 vs. Texas (165 - 5 sets)
Sept. 1, 2009 vs. TCU (10 - 5 sets)
Aug. 30, 2008 vs. Prairie View A&M (16 - 3 sets)
Oct. 28, 2009 at Iowa State (15.5 - 5 sets)
Sept. 19, 2007 at Colorado (23.0 - 5 sets)*

*School Record

BIG 12 PRESEASON

ALL-BIG 12 PRESEASON TEAM

Name, School	Pos.	Cl.	Ht.	Hometown
Taylor Barnes, Baylor	S	Sr.	5-11	Arlington, Texas
Anna Breyfogle, Baylor	MB	Sr.	6-1	Buda, Texas
Victoria Henson, Iowa State^	OH	Jr.	5-11	Leavenworth, Kan.
Kaylee Manns, Iowa State	S	Sr.	5-10	Topeka, Kan.
Ashley Mass, Iowa State	DS/L	Jr.	5-8	Muskego, Wis.
Kelsey Chipman, Kansas State	MB	Sr.	6-1	Topeka, Kan.
Sydney Anderson, Nebraska^	S	Jr.	6-0	Salt Lake City, Utah
Kori Cooper, Nebraska^	MB	Sr.	6-2	Amarillo, Texas
Tara Mueller, Nebraska	OH	Jr.	6-0	Scottsdale, Ariz.
Ashley Engle, Texas^	S/RS	Sr.	6-3	Yorba Linda, Calif.
Juliann Faucette, Texas^	OH	Jr.	6-2	San Diego, Calif.
Destinee Hooker, Texas	OH	Sr.	6-4	San Antonio, Texas
Sarah Ammerman, Texas A&M^	OH	Sr.	6-2	Parker, Colo.
Mary Batis, Texas A&M	OH	Sr.	6-0	San Antonio, Texas

^ unanimous selection

Preseason Player of the Year: Destinee Hooker, Texas
Preseason Newcomer of the Year: Paola Ampudia, Missouri
Preseason Freshman of the Year: Bailey Webster, Texas

head coach

JIM BARNES

6th season at BU
14th season overall



Entering his 14th season as a Division I head coach, Jim Barnes has posted an impressive 259-185 (.583) record, winning 20 or more matches five times. Barnes has led his teams to nine winning campaigns, twice earning conference Coach of the Year honors. He enters his sixth season at the helm of the Baylor Lady Bears volleyball program, posting a 96-87 (.525) overall record.

Last season, Barnes' team went 18-13 overall, finishing sixth in the Big 12 with a 9-11 conference record. Baylor's 18 regular season wins tied the most since 1999, while the Bears' nine Big 12 victories also tied for the most since 1999. Barnes' squad began 2008 with a school record eight-straight wins to open a season, then broke another school record, winning their first three Big 12 matches. After suffering injury setbacks during the second half of the season, the Bears narrowly missed an at-large bid to the NCAA tournament.

Baylor's 2007 squad finished with an overall record of 14-17, finishing eighth overall in the Big 12. The Bears were on the cusp of a winning season, with a 14-11 record late in the year, but suffered six straight losses, including a program record four-straight losses in five-games.

The Bears continued their solid defensive play, ranking near the top of the Big 12 in digs and blocks, a point of focus for Barnes' squads. The Bears ranked 37th in the nation and fourth in the conference in blocks per game, and Baylor tallied 16.48 digs per game, its highest season total in six years.

The 2006 Bears went 18-15, producing a winning record for the first time in Barnes' tenure with the program. The Bears were ranked as high as 30th in the nation, and set a school record with a 12-1 nonconference record. Again, Baylor improved its record by three wins, a trend that Barnes set during his first two seasons in Waco. While Baylor's conference record was 6-14, the same as 2005, the Big 12 featured five teams ranked in the final CSTV/AVCA Top 25, and sent six teams to the NCAA Tournament.

During the 2005 season, the Bears improved upon their record from the previous year in their second season under Barnes. Baylor went 15-17 overall, a three-win improvement, and 6-14 in Big 12 Conference play, two more league wins than 2004. The Bears ranked 19th nationally and third in the Big 12 with 3.05 blocks per game. The Bears also ranked fifth in the league with 14.53 digs per game. Baylor's signature victory was a four-game win over NCAA Tournament participant Texas A&M in College Station, the Bears' first victory at G. Rollie White Coliseum since 1992.

The 2004 Bears ranked 17th nationally with 3.05 blocks per game and outblocked nearly every opponent they faced - 25 of 31 matches to be exact, including their home match against the nation's top blocking team, Nebraska.

In his first season at Baylor, Barnes led the Bears to a 12-19 record, 4-16 in Big 12 Conference play. The Bears won five straight matches to claim the Sam Houston State Tournament title and recorded an upset victory over No. 24 Kansas at home. Desiree Guilliard-Young continued to emerge as a dominant force and earned honorable mention All-Big 12 honors and was also named the Sam Houston State Tournament's most valuable player.

Barnes earned his bachelor's degree in health and human performance from McNeese State in 1994 and completed his master's degree from the school in 1996. He is married to the former Tracy Pittman, and they have two daughters, Brooke Aidan (10) and Jenna Grace (7).

BARNES at BAYLOR (2004-present)

Yr.	Overall			Big 12			Finish
	W	L	Pct.	W	L	Pct.	
2004	12	19	.387	4	16	.200	T-9th
2005	15	17	.479	6	14	.300	9th
2006	18	15	.545	6	14	.300	7th
2007	14	17	.452	6	14	.300	8th
2008	18	13	.581	9	11	.450	6th
2009	19	6	.760	8	6	.571	-
TOTAL	96	87	.525	39	75	.342	

2009 BAYLOR ROSTER

NUMERICAL

NO.	PLAYER	POS.	HT.	CL.-EXP.	HOMETOWN (HIGH SCHOOL)
1	Brittany Ridenour	S	5-10	So.-1L	Council Bluffs, Iowa (Lincoln)
2	Caitlyn Trice	DS	5-10	Jr.-2L	Sugar Land, Texas (Stephen F. Austin)
3	Zoe Adom	OH	5-11	Fr.-HS	Euleus, Texas (Euleus Trinity)
6	Ashley Byrd	MB	6-2	Jr.-2L	Denton, Texas (Ryan)
7	Torri Campbell	MB/RS	6-2	Fr.-HS	Amarillo, Texas (Amarillo)
8	Allison King	L/DS	5-11	So.-1L	Carrollton, Texas (Hebron)
9	Taylor Barnes	S	5-11	Sr.-3L	Arlington, Texas (Martin)
11	Kiley Sherman	OH/DS	5-11	Fr.-HS	Oswego, Ill. (Oswego East)
14	Anna Breyfogle	MB	6-1	Sr.-3L	Buda, Texas (Hays)
18	Jordan Rice	DS	6-0	So.-1L	Waco, Texas (Midway)
20	Qian Zhang	OH	6-0	So.-1L	Beijing, China (Yi Jia Gao Ji)
21	Briana Tolbert	MB/RS	6-3	So.-1L	Houston, Texas (Cypress Springs)
22	Katie Sanders	OH	6-1	Sr.-3L	Katy, Texas (Cinco Ranch)
24	Ashlie Christenson	OH/RS	6-0	Jr.-2L	Cleburne, Texas (Cleburne)
31	Elizabeth Graham	MB	6-2	Jr.-TR	Leander, Texas (Vista Ridge/Texas)

ALPHABETICAL

NO.	PLAYER	POS.	HT.	CL.-EXP.	HOMETOWN (HIGH SCHOOL)
3	Zoe Adom	OH	5-11	Fr.-HS	Euleus, Texas (Euleus Trinity)
9	Taylor Barnes	S	5-11	Sr.-3L	Arlington, Texas (Martin)
14	Anna Breyfogle	MB	6-1	Sr.-3L	Buda, Texas (Hays)
6	Ashley Byrd	MB	6-2	Jr.-2L	Denton, Texas (Ryan)
7	Torri Campbell	MB/RS	6-2	Fr.-HS	Amarillo, Texas (Amarillo)
24	Ashlie Christenson	OH/RS	6-0	Jr.-2L	Cleburne, Texas (Cleburne)
31	Elizabeth Graham	MB	6-2	Jr.-TR	Leander, Texas (Vista Ridge/Texas)
8	Allison King	L/DS	5-11	So.-1L	Carrollton, Texas (Hebron)
18	Jordan Rice	DS	6-0	So.-1L	Waco, Texas (Midway)
1	Brittany Ridenour	S	5-10	So.-1L	Council Bluffs, Iowa (Lincoln)
22	Katie Sanders	OH	6-1	Sr.-3L	Katy, Texas (Cinco Ranch)
11	Kiley Sherman	OH/DS	5-11	Fr.-HS	Oswego, Ill. (Oswego East)
21	Briana Tolbert	MB/RS	6-3	So.-1L	Houston, Texas (Cypress Springs)
2	Caitlyn Trice	DS	5-10	Jr.-2L	Sugar Land, Texas (Stephen F. Austin)
20	Qian Zhang	OH	6-0	So.-1L	Beijing, China (Yi Jia Gao Ji)

Head Coach: Jim Barnes (McNeese State, 1994) - Sixth Season at Baylor (14th Overall)

Associate Coach: Bryan Bunn (Texas-San Antonio, 1988) - Third Season

Assistant Coach: Candice O'Brien (Buffalo, 1997) - Sixth Season

Volunteer Assistant Coach: Anthony Avillanoza (Baylor, 2006) - Third Season

SUPPORT STAFF

Graduate Assistant: Diego Castaneda

Athletic Trainer: Kelly Bare

Strength & Conditioning Coach: Adam Davis

Academic Advisor: Kristen Schramek

Manager: Gabrielle Whitt

Sport Administrator: Tom Hill

Media Relations: Todd Zeidler

PRONUCIATION GUIDE

ZOE ADOM	ZO-ee uh-DAWM
Anna BREYFOGLE	BRY-fo-gul
Brittany RIDENOUR	RIDE-in-our
QIAN ZHANG	CHIN JHAWNG
Anthony AVILLANOZA	ah-VEE-YAH-NO-zah

season/career highs

1 - Brittany Ridenour

Kills	1 vs. UTSA (9/5/09)
Career	1, two times (last vs. UTSA, 9/5/09)
Attacks	4 vs. UTSA (9/5/09)
Career	same
Assists	16 vs. UTSA (9/5/09)
Career	same
Digs	2 vs. UTSA (9/5/09)
Career	19 vs. Missouri (9/21/08)
Blocks	2, two times (last vs. UTSA, 9/5/09)
Career	same

2 - Caitlyn Trice

Kills	1, five times (last at Iowa State, 10/28/09)
Career	1, six times (last at Iowa State 10/28/09)
Attacks	2, four times (last vs. Kansas State 9/19/09)
Career	4 vs. Kansas State (10/25/08)
Assists	2, two times (last vs. Oklahoma 11/4/09)
Career	5 vs. TCU (11/11/08)
Digs	17 at Iowa State (10/28/09)
Career	17, two times (last at Iowa State 10/28/09)
Blocks	-
Career	-

3 - Joe Adom

Kills	-
Career	-
Attacks	-
Career	-
Assists	-
Career	-
Digs	-
Career	-
Blocks	-
Career	-

6 - Ashley Byrd

Kills	11 vs. Purdue (9/5/09)
Career	13 vs. Missouri (11/22/08)
Attacks	25 vs. Purdue (9/5/09)
Career	32 at Oklahoma (11/2/08)
Assists	2 vs. UCF (9/4/09)
Career	3, five times (last vs. Kansas State, 10/25/08)
Digs	2 vs. SE Louisiana (8/28/09)
Career	6 vs. Oklahoma (9/24/08)
Blocks	4 vs. Texas A&M (10/10/09)
Career	7 at Colorado (11/8/08)

7 - Torri Campbell

Kills	18 at Iowa State (10/28/09)
Career	same
Attacks	49 at Iowa State (10/28/09)
Career	same
Assists	1, three times (last at Texas Tech, 10/7/09)
Career	same
Digs	3 vs. Iowa State (9/23/09)
Career	same
Blocks	9 at Iowa State (10/28/09)
Career	same

8 - Allison King

Kills	1, two times (last vs. Purdue, 9/5/09)
Career	11, two times (last vs. Kansas, 11/26/08)
Attacks	4 vs. Purdue (9/5/09)
Career	36 vs. Texas A&M (11/15/08)
Assists	10 at Kansas State (10/24/09)
Career	same
Digs	32 at Iowa State (10/28/09)
Career	32 at Iowa State (10/28/09)
Blocks	-
Career	3 vs. Nebraska (11/29/08)

9 - Taylor Barnes

Kills	10 vs. Iowa State (9/23/09)
Career	11, two times (last vs. Colorado, 10/18/06)
Attacks	19, two times (last at Iowa State 10/28/09)
Career	24 at Missouri (10/27/06)
Assists	54 at Kansas State (10/24/09)
Career	64 vs. Oklahoma (9/24/08)
Digs	19 at Iowa State (10/28/09)
Career	20 vs. Oklahoma (9/24/08)
Blocks	4, two times (last at New Mexico, 9/11/09)
Career	8, two times (last at Colorado, 9/19/07)

11 - Kiley Sherman

Kills	-
Career	-
Attacks	-
Career	-
Assists	-
Career	-
Digs	-
Career	-
Blocks	-
Career	-

14 - Anna Dreyfogle

Kills	21 at New Mexico (9/11/09)
Career	same
Attacks	33 at Oklahoma (10/17/09)
Career	44 vs. Kansas State (11/10/07)
Assists	1, five times (last at New Mexico, 9/5/09)
Career	5 at Texas Tech (10/27/07)
Digs	8 vs. Iowa State (9/23/09)
Career	16 vs. SMU (8/29/08)
Blocks	12 at Houston (8/28/09)
Career	13 at Colorado (9/19/07)

18 - Jordan Rice

Kills	1 vs. UCF (9/4/09)
Career	1, five times (last vs. UCF, 9/4/09)
Attacks	1 vs. UCF (9/4/09)
Career	4 at Missouri (9/21/08)
Assists	4 vs. Iowa State (9/23/09)
Career	same
Digs	18 vs. New Mexico (9/11/09)
Career	same
Blocks	-
Career	-

20 - Dian Zhang

Kills	3 at Houston (8/28/09)
Career	10 vs. UTSA (9/6/09)
Attacks	8 at Houston (8/28/09)
Career	23 vs. UTSA (9/6/09)
Assists	1 vs. UTSA (9/8/09)
Career	2, two times (last vs. Texas Tech, 9/17/08)
Digs	5 at Oklahoma (10/17/09)
Career	6 vs. UTSA (9/6/08)
Blocks	2 at Houston (8/28/09)
Career	3 vs. UTSA (9/6/08)

21 - Briana Tolbert

Kills	7 vs. UCF (9/4/09)
Career	11, two times (last at Colorado, 11/8/08)
Attacks	13 at Houston (8/28/09)
Career	31 at Oklahoma (11/2/08)
Assists	-
Career	1, two times (last vs. Kansas State, 10/25/08)
Digs	1, two times (last at Colorado, 10/03/09)
Career	2, seven times (last at OU, 11/2/08)
Blocks	3 at TCU (9/1/09)
Career	7 vs. Eastern Washington (9/12/08)

22 - Katie Sanders

Kills	20 vs. Purdue (9/5/09)
Career	25, two times (last vs. Kansas State, 11/10/07)
Attacks	58 vs. TCU (9/1/09)
Career	83 vs. Kansas State (11/10/07)
Assists	5, two times (last at Oklahoma 10/17/09)
Career	6 vs. Texas State (9/2/08)
Digs	18 at Kansas State (10/24/09)
Career	28 at Oklahoma (11/14/07)
Blocks	6 vs. Texas A&M (10/10/09)
Career	7 vs. Mississippi State (9/1/07)

24 - Ashlie Christenson

Kills	20 vs. Texas A&M (10/10/09)
Career	20 vs. Texas A&M (10/10/09)
Attacks	48 vs. Texas A&M (10/10/09)
Career	52 at Iowa State (11/7/07)
Assists	1, three times (last vs. UTSA, 9/5/09)
Career	2 vs. Nebraska (11/21/07)
Digs	5 vs. Texas A&M (10/10/09)
Career	12 vs. Missouri (11/22/08)
Blocks	4 vs. Pittsburgh (9/11/09)
Career	7 at Colorado (11/8/08)

31 - Elizabeth Graham

Kills	14 at Kansas State (10/24/09)
Career	same
Attacks	33 at Iowa State (10/28/09)
Career	same
Assists	1 at Texas Tech (10/7/09)
Career	-
Digs	3, four times (last at Oklahoma 10/17/09)
Career	same
Blocks	7 at Iowa State (10/28/09)
Career	same

baylor all-time records

ALL-TIME RANKINGS

KILLS		
1.	Elisha Polk, 1996-1999	2,272
2.	Stevie Nicholas, 2000-2003	1,548
3.	Heather Williams, 1989-1992	1,506
4.	Tisha Schwartz, 2000-2003	1,501
5.	Kia Young, 1996-1999	1,449
6.	Katie Sanders, 2006-current	1,445
7.	Nicole LeBlanc, 2003-2006	1,410
8.	Jenny DeLue, 1990-1993	1,241
9.	Anna Breyfogle, 2006-current	1,101
10.	Sunny Nicholas, 1998-2001	1,090

ASSISTS		
1.	Dana Chuha, 1998-2001	4,955
2.	Taylor Barnes, 2006-current	4,878
3.	Cory Sivertson, 1991-1994	4,846
4.	Emily Huston, 2002-2005	4,619
5.	Sharon Pratt, 1993-1996	2,696
6.	Beth Fountain, 1982-1985	2,609
7.	Shelly Ginter, 1985-1988	2,462
8.	Sarah Sivertson, 1995-1998	1,916
9.	Jennifer Harris, 1997	1,131
10.	Jenny Kenyon, 1986-1989	892

SERVICE ACES		
1.	Taylor Barnes, 2006-current	196
2.	Cory Sivertson, 1991-1994	195
3.	Emily Huston, 2002-2005	182
4.	Heather Williams, 1989-1992	168
5.	Jana Ranly, 1985-1988	136
6.	Stevie Nicholas, 2000-2003	124
7.	Shelley Keyes, 1984-1987	114
	Dana Atkinson, 1997-2000	114
9.	Erin McElwain, 1992-1995	113
10.	Jenny DeLue, 1990-1993	110

BLOCKS		
1.	Erin McElwain, 1992-1995	625
2.	Desiree Guilliard-Young, 2003-2006	600
3.	Anna Breyfogle, 2006-current	577
4.	Jana Ranly, 1985-1988	534
5.	Cory Sivertson, 1991-1994	523
6.	Dawn Martin, 1987-1990	460
7.	Jennifer Burrows, 1989-1992	439
8.	Jenny DeLue, 1990-1993	353
9.	Tisha Schwartz, 2000-2003	342
10.	Kia Young, 1996-1999	329

PER-SET RECORDS (min. 200 sets)

ASSISTS PER SET				
	A	Sets	APS	
1.	Dana Chuha	4,955	410	12.09
2.	Taylor Barnes	4,878	438	11.14
3.	Emily Huston	4,619	461	10.02
4.	Cory Sivertson	4,846	527	9.20
5.	Shelly Ginter	2,462	307	8.02

SERVICE ACES PER SET				
	SA	Sets	SAPS	
1.	Taylor Barnes	196	438	0.447
2.	Emily Huston	182	461	0.394
3.	Cory Sivertson	195	527	0.370
4.	Heather Williams	168	460	0.365
5.	Jana Ranly	136	392	0.347

BLOCKS PER SET				
	TB	Sets	BPS	
1.	D. Guilliard-Young	600	413	1.45
2.	Anna Breyfogle	577	405	1.42
3.	Jana Ranly	534	392	1.36
4.	Erin McElwain	625	515	1.21
5.	Dawn Martin	460	397	1.16

RALLY SCORING ONLY (2001-present)

KILLS		
1,445	Katie Sanders	2006-current
1,410	Nicole LeBlanc	2003-06
1,353	Tisha Schwartz	2001-03
1,049	Stella Odion	2002-05
935	Stevie Nicholas	2001-03

TOTAL ATTEMPTS		
4,078	Katie Sanders	2006-Current
3,880	Nicole LeBlanc	2003-06
3,503	Tisha Schwartz	2001-03
2,701	Stella Odion	2002-05
2,379	Kelly Spriggs	2002-05

ASSISTS		
4,878	Taylor Barnes	2006-current
4,619	Emily Huston	2002-05
1,460	Dana Chuha	2001
719	Jillian Mazzarella	2001-05
157	Maggie Chlebana	2003-05

SERVICE ACES		
196	Taylor Barnes	2006-current
182	Emily Huston	2002-05
104	Stevie Nicholas	2001-03
97	Nicole LeBlanc	2003-06
80	Stella Odion	2002-05

DIGS		
1,523	Kristen Schramek	2004-07
1,127	Nicole LeBlanc	2003-06
1,053	Taylor Barnes	2006-current
894	Emily Huston	2002-05
862	Stevie Nicholas	2001-03

BLOCKS		
600	Desiree Guilliard-Young	2003-06
577	Anna Breyfogle	2006-current
383	Nicole LeBlanc	2003-06
304	Emily Huston	2002-05
294	Stella Odion	2002-05

SINGLE-SEASON RANKINGS

ATTACK PERCENTAGE (min. 200 kills)		
1.	Cory Sivertson, 1994	.372
2.	Cory Sivertson, 1992	.350
3.	Anna Breyfogle, 2009	.348
4.	D. Guilliard-Young, 2006	.345
5.	Cory Sivertson, 1993	.342
6.	Anna Breyfogle, 2007	.326
7.	Heather Saari, 1994	.323
8.	Sunny Nicholas, 1999	.320
	D. Guilliard-Young, 2003	.320
10.	Jana Ranly, 1986	.315

SERVICE ACES PER SET (min. 30 aces)		
1.	Stevie Nicholas, 2002	0.950
2.	Emily Huston, 2004	0.540
3.	Stevie Nicholas, 2001	0.527
4.	Taylor Barnes, 2006	0.513
5.	Cory Sivertson, 1992	0.474
6.	Laura Daniela Lloreda, 2001	0.455
7.	Jana Ranly, 1985	0.451
8.	Susie O'Malley, 1985	0.449
9.	Heather Williams, 1990	0.444
	Shelley Keyes, 1986	0.443

DIGS PER SET (min. 300 digs)		
1.	Allison King, 2009	4.47
2.	Elisha Polk, 1999	4.42
3.	Sarah Grace, 2007	4.30
4.	Kristen Schramek, 2006	4.01
5.	Allison King, 2008	3.94
6.	Laura Daniela Lloreda, 2001	3.48
7.	Kristen Schramek, 2005	3.43
	Dana Atkinson, 1999	3.43
9.	Kristen Schramek, 2004	3.41
10.	Dana Atkinson, 2000	3.40

TOTAL BLOCKS PER SET (min. 80 blocks)		
1.	Desiree Guilliard-Young, 2005	1.85
2.	Desiree Guilliard-Young, 2006	1.58
3.	Adeline Meira, 2004	1.56
4.	Anna Breyfogle, 2007	1.54
5.	Jana Ranly, 1985	1.52
6.	Dawn Martin, 1989	1.50
7.	Anna Breyfogle, 2008	1.45
8.	Jana Ranly, 1987	1.39
9.	Anna Breyfogle, 2009	1.38
10.	Desiree Guilliard-Young, 2004	1.37
	Cory Sivertson, 1993	1.37

* - NCAA Leader

** - Big 12 Conference Record
(Current athletes in bold)

match-by-match summaries

match 1

BAYLOR 3, SOUTHEASTERN LOUISIANA 0

Aug. 28, 2009 - Houston, Texas (Athletics/Alumni Center)

SET SCORES	1	2	3	4	5	TEAM RECORDS									
SLU	22	15	15			0-1									
Baylor	25	25	25			1-0									
##	SP	K	E	TA	PCT	A	SA	SE	RE	DIG	BS	BA	BE	BHE	
5 Buckner, Taylor	3	3	3	10	.000	0	0	1	0	3	0	0	0	0	
8 Donald, Courtney	3	6	3	13	.231	0	0	0	0	0	0	0	0	0	
10 Mayer, Lauren	3	4	3	12	.083	2	0	0	0	5	0	0	0	0	
12 Glover, Kaprice	3	3	4	20	-.050	0	0	0	0	1	0	0	0	0	
14 Collins, Katie	3	3	0	5	.600	15	5	2	0	1	0	0	0	0	
16 Braghini, Alexis	3	1	5	11	-.364	0	0	3	0	1	0	0	0	0	
1 Pittman, Margaret	3	0	1	1	-1.000	0	2	1	0	2	0	0	0	0	
2 Greer, Alex	3	0	0	0	.000	1	0	0	2	14	0	0	0	1	
6 Jones, Allison	1	1	2	6	-.167	0	0	0	0	0	0	0	0	0	
11 Evans, Kalynn	3	2	1	14	.071	0	0	0	1	1	1	0	0	1	
TEAM										1					
Totals.....	3	23	22	92	.011	18	7	7	4	28	1	0	0	2	

TOTAL TEAM BLOCKS: 1.0

##	SP	K	E	TA	PCT	A	SA	SE	RE	DIG	BS	BA	BE	BHE
2 Trice, Caitlyn	2	0	0	0	.000	0	0	2	3	2	0	0	0	0
6 Byrd, Ashley	3	6	3	14	.214	0	0	0	0	2	0	1	2	0
9 Barnes, Taylor	3	2	3	7	-.143	28	2	1	0	7	0	2	0	0
14 Breyfogle, Anna	3	8	1	10	.700	0	0	1	0	1	1	6	0	0
22 Sanders, Katie	3	9	0	19	.474	0	0	1	3	8	0	2	1	0
31 Graham, Elizabeth	3	4	0	8	.500	0	0	0	1	1	0	1	1	1
1 Ridenour, Brittany	1	0	0	0	.000	5	0	0	0	1	0	0	0	0
8 King, Allison	3	1	0	1	1.000	2	0	4	0	15	0	0	0	0
18 Rice, Jordan	3	0	0	0	.000	1	1	1	0	4	0	0	0	0
20 Zhang, Qian	1	2	0	4	.500	0	1	0	0	0	0	1	0	0
24 Christenson, Ashlie	2	6	3	15	.200	0	0	0	0	1	0	1	0	0
Totals.....	3	38	10	78	.359	36	4	10	7	42	1	14	4	1

TOTAL TEAM BLOCKS: 8.0

match 3

BAYLOR 3, NEW ORLEANS 0

Aug. 29, 2009 - Houston, Texas (Athletics/Alumni Center)

SET SCORES	1	2	3	4	5	TEAM RECORDS									
Baylor	25	26	25			3-0									
New Orleans	20	24	21			1-2									
##	SP	K	E	TA	PCT	A	SA	SE	RE	DIG	BS	BA	BE	BHE	
2 Trice, Caitlyn	3	0	0	0	.000	0	0	2	0	12	0	0	0	0	
7 Campbell, Torri	3	8	2	23	.261	1	0	0	0	2	0	1	1	1	
9 Barnes, Taylor	3	2	1	5	.200	35	2	1	0	12	0	2	0	0	
14 Breyfogle, Anna	3	9	3	21	.286	0	1	2	0	0	1	3	1	0	
22 Sanders, Katie	3	12	3	40	.225	0	1	0	2	13	0	2	0	1	
31 Graham, Elizabeth	2	2	1	7	.143	0	0	0	0	0	0	1	0	0	
6 Byrd, Ashley	1	3	0	5	.600	0	0	0	0	0	0	1	1	0	
8 King, Allison	3	0	0	1	.000	4	1	1	0	9	0	0	0	1	
18 Rice, Jordan	3	0	0	0	.000	2	0	3	0	8	0	0	0	0	
24 Christenson, Ashlie	3	11	6	28	.179	0	0	0	0	3	0	0	1	0	
Totals.....	3	47	16	130	.238	42	5	9	2	59	1	10	4	3	

TOTAL TEAM BLOCKS: 6.0

##	SP	K	E	TA	PCT	A	SA	SE	RE	DIG	BS	BA	BE	BHE
1 Loyd, Lindsey	3	15	3	41	.293	0	1	1	1	7	0	0	0	0
9 Ford, Heather	1	0	0	1	.000	0	0	0	0	1	0	0	0	0
11 Asebroek, Cassidy	3	0	1	2	-.500	15	0	2	0	8	0	0	0	0
12 Szivos, Maria	3	4	3	19	.053	0	0	1	0	2	0	2	0	0
13 Jelic, Vesna	3	3	3	14	.000	0	1	0	1	8	0	2	0	0
14 Dobi, Edina	3	5	2	19	.158	1	0	0	0	0	0	1	0	0
2 Molnar, Hajnalka	3	0	0	1	.000	9	0	2	0	4	0	0	0	1
4 Hubbard, Kaley	3	4	3	14	.071	0	0	0	0	1	1	2	0	0
6 Farkas, Anett	3	3	1	10	.200	0	0	0	0	1	1	3	0	0
10 Valenti, Nicky	3	0	0	0	.000	0	0	0	3	24	0	0	0	0
22 Hatcher, Kaitlin	1	0	1	2	-.500	0	0	0	0	3	0	0	0	0
Totals.....	3	34	17	123	.138	25	2	6	5	59	2	10	0	1

TOTAL TEAM BLOCKS: 7.0

match 2

BAYLOR 3, Houston 0

Aug. 28, 2009 - Houston, Texas (Athletics/Alumni Center)

SET SCORES	1	2	3	4	5	TEAM RECORDS									
Baylor	25	25	25			2-0									
Houston	19	13	18			0-2									
##	SP	K	E	TA	PCT	A	SA	SE	RE	DIG	BS	BA	BE	BHE	
2 Trice, Caitlyn	3	0	0	1	.000	2	0	0	3	3	0	0	0	0	
7 Campbell, Torri	3	4	1	8	.375	0	0	0	0	2	0	2	0	0	
9 Barnes, Taylor	3	2	0	2	1.000	25	0	0	0	2	0	4	0	0	
14 Breyfogle, Anna	3	12	1	23	.478	1	0	1	0	0	1	11	0	0	
21 Tolbert, Briana	3	6	2	13	.308	0	0	0	0	1	0	2	0	0	
22 Sanders, Katie	2	9	3	21	.286	0	0	1	1	7	0	2	0	0	
1 Ridenour, Brittany	1	0	1	1	-1.000	5	0	0	0	1	0	2	0	0	
8 King, Allison	3	0	0	2	.000	2	0	4	2	14	0	0	0	0	
18 Rice, Jordan	3	0	0	0	.000	0	1	1	0	7	0	0	0	0	
20 Zhang, Qian	1	3	2	8	.125	0	0	0	1	2	0	2	0	0	
24 Christenson, Ashlie	3	5	2	12	.250	1	0	0	0	2	0	1	0	0	
Totals.....	3	41	12	91	.319	36	1	7	7	41	1	26	0	0	

TOTAL TEAM BLOCKS: 14.0

##	SP	K	E	TA	PCT	A	SA	SE	RE	DIG	BS	BA	BE	BHE
1 ROENICKE, Tara	3	1	1	3	.000	22	1	0	0	6	0	0	0	0
2 CAVÉ, Kinsey	3	8	4	22	.182	0	0	0	0	2	0	1	0	0
5 CARSON, Amanda	3	5	9	25	-.160	0	0	2	0	2	0	0	0	0
6 TOAZZI, Marlucci	3	0	3	11	-.273	0	2	2	0	6	1	0	0	0
8 APPLEQUIST, Ashley	3	1	3	9	-.222	0	4	2	0	1	0	1	0	0
14 RICE, Erin	3	5	4	18	.056	0	0	0	0	0	0	0	0	0
4 DEANGELIS, Krysta	1	0	0	0	.000	0	0	0	1	1	0	0	0	0
10 TERRY, Jasmine	2	4	3	12	.083	0	0	0	0	1	1	0	0	0
12 CARDOSO DE SA, Alik	3	0	0	0	.000	1	0	0	0	12	0	0	0	0
Totals.....	3	24	27	100	-.030	23	7	6	1	31	2	2	0	0

TOTAL TEAM BLOCKS: 3.0

match 4

BAYLOR 3, TCU 2

Sept. 1, 2009 - Fort Worth, Texas (University Rec Center)

SET SCORES	1	2	3	4	5	TEAM RECORDS									
Baylor	28	17	22	25	15	4-0									
TCU Horned Frogs	26	25	25	9	13	2-2									
##	SP	K	E	TA	PCT	A	SA	SE	RE	DIG	BS	BA	BE	BHE	
2 Trice, Caitlyn	5	0	0	2	.000	0	1	1	3	14	0	0	0	0	
6 Byrd, Ashley	3	3	1	11	.182	0	0	0	0	1	0	1	1	0	
9 Barnes, Taylor	5	5	1	14	.286	43	1	4	0	12	0	1	0	0	
14 Breyfogle, Anna	5	16	2	24	.583	0	3	2	0	4	1	1	1	0	
18 Rice, Jordan	5	0	0	0	.000	2	2	1	1	9	0	0	0	0	
22 Sanders, Katie	5	13	8	58	.086	0	2	0	6	14	0	2	0	0	
7 Campbell, Torri	5	4	4	21	.000	0	0	0	0	2	0	1	0	0	
8 King, Allison	5	0	0	2	.000	7	1	3	0	14	0	0	0	0	
20 Zhang, Qian	1	1	0	6	.167	0	0	0	0	1	0	1	0	0	
21 Tolbert, Briana	4	5	1	10	.400	0	0	0	0	0	0	3	0	0	
24 Christenson, Ashlie	4	13	7	29	.207	1	0	0	0	2	0	0			

match-by-match summaries

match 5

BAYLOR 3, UCF 0

Sept. 4, 2009 - Waco, Texas (Ferrell Center)

SET SCORES	1	2	3	4	5	TEAM RECORDS									
UCF	9	18	16			5-1									
Baylor	25	25	25			5-0									
## UCF	SP	K	E	TA	PCT	A	SA	SE	RE	DIG	BS	BA	BE	BHE	
1 VILDE, Evija	3	1	0	11	.091	1	0	1	0	1	0	1	0	0	
3 REX, Sara	3	1	0	4	.250	0	0	0	0	0	0	4	0	0	
5 YOUNGBLOOD, Andee	3	0	0	0	.000	13	1	2	0	5	0	1	0	2	
6 CAMPBELL, Erin	3	8	4	27	.148	1	0	3	2	1	0	1	0	0	
7 FISHER, Kristin	2	0	5	7	-.714	0	0	0	1	0	0	0	0	0	
15 RIEDEL, Nichole	3	2	0	3	.667	0	0	0	0	0	0	1	0	0	
2 HARRISON, Dani	1	0	0	0	.000	0	0	0	0	2	0	0	0	0	
4 WALLACE, Brittanie	3	3	3	15	.000	0	0	0	0	3	0	1	0	0	
8 MURPHY, Meredith	3	0	0	0	.000	0	1	0	0	10	0	0	0	0	
11 FORDE, Renele	2	4	2	13	.154	4	0	2	0	2	1	1	0	0	
13 PETRASIC, Kristen	2	0	0	0	.000	0	0	0	0	0	0	0	0	0	
TEAM										1					
Totals.....	3	19	14	80	.062	19	2	8	4	24	1	10	0	2	

TOTAL TEAM BLOCKS: 6.0

## Baylor	SP	K	E	TA	PCT	A	SA	SE	RE	DIG	BS	BA	BE	BHE
6 Byrd, Ashley	3	7	1	13	.462	2	0	0	0	0	0	3	0	0
9 Barnes, Taylor	3	4	0	6	.667	34	2	4	0	6	0	3	1	2
14 Breyfogle, Anna	3	3	1	7	.286	0	0	0	0	3	0	4	0	0
21 Tolbert, Briana	2	7	2	11	.455	0	0	0	0	0	0	0	1	0
22 Sanders, Katie	3	12	3	21	.429	0	0	0	0	1	10	0	0	0
24 Christenson, Ashlie	3	9	3	19	.316	0	0	0	0	0	0	2	0	0
1 Ridenour, Brittany	1	0	0	0	.000	0	0	1	0	0	0	0	0	1
2 Trice, Caitlyn	3	0	0	0	.000	1	0	1	1	6	0	0	0	0
8 King, Allison	3	0	0	0	.000	5	1	1	0	11	0	0	0	0
18 Rice, Jordan	2	1	0	1	1.000	1	1	1	0	4	0	0	0	0
31 Graham, Elizabeth	1	3	0	5	.600	0	0	0	0	0	1	3	0	0
Totals.....	3	46	10	83	.434	43	4	8	2	40	1	15	2	3

TOTAL TEAM BLOCKS: 8.5

match 7

BAYLOR 3, No. 24 PURDUE 2

Sept. 5, 2009 - Waco, Texas (Ferrell Center)

SET SCORES	1	2	3	4	5	TEAM RECORDS									
Purdue	25	20	23	25	13	4-2									
Baylor	21	25	25	23	15	7-0									
## Purdue	SP	K	E	TA	PCT	A	SA	SE	RE	DIG	BS	BA	BE	BHE	
4 Pierce, Lisa	5	7	2	17	.294	0	2	2	0	4	0	2	0	0	
5 Hart, Jaclyn	5	6	1	9	.556	58	0	0	0	6	0	2	0	2	
6 Ehlers, Emily	5	0	1	2	-.500	1	1	0	1	8	0	0	0	0	
13 Gumell, Carrie	5	23	9	57	.246	1	0	0	0	9	1	4	0	0	
16 Arthurs, Kristen	5	14	5	25	.360	1	0	0	0	2	1	1	1	1	
18 Fisher, Tiffany	5	8	3	19	.263	0	0	2	0	3	0	8	0	0	
8 Turner, Ariel	5	10	3	29	.241	0	0	2	0	4	0	0	0	0	
11 Cramer, Carly	5	0	0	0	.000	1	0	0	0	7	0	0	0	0	
14 Bashen, Blair	5	2	0	2	1.000	4	0	2	2	39	0	0	0	1	
15 Gosewisch, Courtney	2	0	0	0	.000	0	0	0	0	0	0	0	0	0	
20 Drewry, Anna	2	0	0	1	.000	0	0	0	0	0	0	1	0	0	
Totals.....	5	70	25	162	.278	66	3	8	3	82	2	18	1	4	

TOTAL TEAM BLOCKS: 11.0

## Baylor	SP	K	E	TA	PCT	A	SA	SE	RE	DIG	BS	BA	BE	BHE
2 Trice, Caitlyn	5	0	0	2	.000	1	0	1	0	8	0	0	0	0
6 Byrd, Ashley	5	11	4	25	.280	0	0	0	0	0	0	0	0	1
9 Barnes, Taylor	5	7	0	13	.538	51	3	5	0	9	0	3	0	1
14 Breyfogle, Anna	5	10	3	19	.368	1	0	0	0	2	0	5	0	0
22 Sanders, Katie	5	20	7	56	.232	1	0	0	1	10	0	3	1	0
31 Graham, Elizabeth	4	4	1	14	.214	0	0	0	0	2	1	3	0	0
8 King, Allison	5	1	0	4	.250	4	0	1	1	20	0	0	0	0
18 Rice, Jordan	5	0	0	0	.000	2	0	1	0	9	0	0	0	0
21 Tolbert, Briana	2	3	3	11	.000	0	0	0	0	0	0	0	1	0
24 Christenson, Ashlie	5	12	5	31	.226	0	0	0	1	2	0	2	0	0
Totals.....	5	68	23	175	.257	60	3	8	3	62	1	16	2	2

TOTAL TEAM BLOCKS: 9.0

match 6

BAYLOR 3, UTSA 0

Sept. 5, 2009 - Waco, Texas (Ferrell Center)

SET SCORES	1	2	3	4	5	TEAM RECORDS									
UTSA	18	18	16			2-4									
Baylor	25	25	25			6-0									
## UTSA	SP	K	E	TA	PCT	A	SA	SE	RE	DIG	BS	BA	BE	BHE	
1 Brooks, Amber	3	2	2	5	.000	16	0	0	0	19	0	0	0	0	
6 Huskey, Elise	2	2	0	11	.182	0	1	0	2	2	0	1	0	0	
7 Mason, Briana	3	3	3	15	.000	0	0	0	0	1	2	1	0	0	
10 Robbins, Stefanie	3	4	3	16	.062	0	0	0	0	0	0	1	0	0	
12 Rowland, Kendra	3	6	5	35	.029	1	1	2	1	8	0	1	0	0	
15 Walls, Whitney	3	7	5	18	.111	1	0	0	0	1	0	0	0	0	
2 Jewasko, Kelsey	3	0	0	0	.000	1	0	2	1	14	0	0	0	0	
3 Wimbish, Megan	2	0	0	0	.000	0	0	0	0	5	0	0	0	0	
4 Josseland, Andee	2	5	2	15	.200	0	0	1	0	1	0	0	1	0	
8 Mundell, Vickie	1	0	0	0	.000	6	0	0	0	0	0	0	0	0	
24 Schaufele, Megan	3	0	0	0	.000	0	0	0	0	1	5	0	0	0	
TEAM										1					
Totals.....	3	29	20	115	.078	25	2	5	6	56	2	4	1	0	

TOTAL TEAM BLOCKS: 4.0

## Baylor	SP	K	E	TA	PCT	A	SA	SE	RE	DIG	BS	BA	BE	BHE
2 Trice, Caitlyn	3	0	0	0	.000	0	1	1	0	9	0	0	0	0
6 Byrd, Ashley	3	6	3	18	.167	1	0	0	0	0	1	0	0	0
9 Barnes, Taylor	2	0	2	4	-.500	20	1	1	0	9	0	0	0	0
21 Tolbert, Briana	1	3	1	12	.167	0	0	0	0	0	0	0	0	0
22 Sanders, Katie	3	11	3	31	.258	0	0	0	0	7	1	1	1	0
31 Graham, Elizabeth	3	8	0	17	.471	0	2	1	0	3	0	3	0	0
1 Ridenour, Brittany	2	1	1	4	.000	16	0	1	0	2	0	2	0	1
7 Campbell, Torri	2	5	2	12	.250	0	0	0	0	0	0	3	0	0
8 King, Allison	3	0	0	0	.000	4	0	2	1	22	0	0	0	0
18 Rice, Jordan	3	0	0	0	.000	0	2	1	0	6	0	0	0	0
20 Zhang, Qian	1	0	0	2	.000	1	0	0	0	1	0	0	0	0
24 Christenson, Ashlie	3	10	1	19	.474	1	0	0	0	1	0	3	0	0
TEAM										1				
Totals.....	3	44	13	119	.261	43	6	7	2	60	2	12	1	1

TOTAL TEAM BLOCKS: 8.0

match 8

BAYLOR 3, TEXAS STATE 0

Sept. 8, 2009 - Waco, Texas (Ferrell Center)

SET SCORES	1	2	3	4	5	TEAM RECORDS									
Texas State	14	13	22			1-7									
Baylor	25	25	25			8-0									
## Texas State	SP	K	E	TA	PCT	A	SA	SE	RE	DIG	BS	BA	BE	BHE	
4 Wolpman, Jillian	3	0	3	5	-.600	1	0	0	0	0	0	0	0	0	
9 Weymand, Jessica	2	2	3	22	-.045	2	0	0	1	3	0	0	0	0	
12 Collins, Brittany	2	1	0	2	.500	7	0	0	0	6	0	0	0	0	
13 Middleton, Mo	3	9	4	29	.172	3	0	3	0	6	0	1	0	0	
16 Cave, Melinda	3	3	3	15	.000	1	0	0	0	8	0	0	0	0	
17 Watlington, AJ	3	5	3	16	.125	0									

match-by-match summaries

match 9

BAYLOR 3, PITTSBURGH 0

Sept. 11, 2009 - Albuquerque, N.M. (Johnson Center)

SET SCORES	1	2	3	4	5	TEAM RECORDS									
Baylor	25	25	25			9-0									
Pittsburgh	16	21	18			5-4									
## Baylor	SP	K	E	TA	PCT	A	SA	SE	RE	DIG	BS	BA	BE	BHE	
6 Byrd, Ashley	3	8	5	15	.200	0	0	0	0	0	0	2	1	0	
7 Campbell, Torri	3	8	0	13	.615	0	0	0	0	0	0	1	0	0	
9 Barnes, Taylor	3	1	0	6	.167	35	0	1	0	8	0	1	0	0	
14 Breyfogle, Anna	3	3	2	9	.111	1	1	0	0	2	1	6	0	0	
22 Sanders, Katie	3	10	5	23	.217	0	0	0	2	5	0	1	0	0	
24 Christenson, Ashlie	3	11	3	22	.364	0	0	0	0	3	1	3	0	0	
2 Trice, Caitlyn	3	0	0	0	.000	0	0	1	0	4	0	0	0	0	
8 King, Allison	3	0	0	1	.000	4	0	0	0	13	0	0	0	0	
18 Rice, Jordan	3	0	0	0	.000	0	1	0	1	3	0	0	0	0	
31 Graham, Elizabeth	1	0	0	0	.000	0	0	0	0	0	0	0	0	0	
Totals.....	3	41	15	89	.292	40	2	2	3	38	2	14	1	0	

TOTAL TEAM BLOCKS: 9.0

## Pittsburgh	SP	K	E	TA	PCT	A	SA	SE	RE	DIG	BS	BA	BE	BHE
8 TOWN, Amy	3	11	11	35	.000	0	2	3	0	5	0	0	0	0
11 HARPER, Imani	3	5	3	18	.111	1	0	0	0	0	0	0	0	0
13 DOOLEY, Meagan	3	9	6	21	.143	0	0	1	0	3	1	3	1	0
15 HARTMAN, Lauren	2	1	0	2	.500	0	0	0	0	0	0	0	0	0
19 STADELMAN, Melissa	3	3	2	16	.062	1	1	0	1	3	1	0	0	0
23 HODNIK, Allyson	3	2	1	3	.333	21	0	0	0	1	0	0	1	1
2 ROHALL, Tara	1	0	0	0	.000	1	0	0	0	0	0	0	0	0
3 KALBERER, Rachel	2	3	2	10	.100	0	0	0	0	0	0	1	0	0
4 FALLIS, Brittany	1	0	0	0	.000	0	0	0	0	0	0	0	0	0
5 KING, Alyssa	2	0	1	1	-1.000	7	0	0	0	3	0	2	0	0
10 FELDMAN, Melanie	3	0	0	0	.000	1	0	0	0	1	0	0	0	0
14 CAMPBELL, Alexa	1	0	0	0	.000	0	0	0	0	0	1	0	0	0
18 ROSSI, Michelle	3	0	0	0	.000	0	0	0	1	12	0	0	0	0
28 WALKER, Michelle	1	1	0	1	1.000	0	0	0	0	0	0	0	0	1
Totals.....	3	35	26	107	.084	32	3	4	2	28	3	6	2	2

TOTAL TEAM BLOCKS: 6.0

match 11

BAYLOR 3, CAL STATE FULLERTON 0

Sept. 12, 2009 - Albuquerque, N.M. (Johnson Center)

SET SCORES	1	2	3	4	5	TEAM RECORDS									
Cal State Fullerton	11	17	24			7-3									
Baylor	25	25	26			11-0									
## Cal State Fullerton	SP	K	E	TA	PCT	A	SA	SE	RE	DIG	BS	BA	BE	BHE	
1 Ragan, Andrea	3	2	0	2	1.000	27	0	0	0	6	0	1	0	0	
3 Sommer, Stephanie	3	0	0	0	.000	1	0	1	2	7	0	0	0	0	
4 Neto, Kayla	3	4	6	17	-.118	0	0	1	0	3	1	1	0	0	
11 Wolnisty, Alex	3	4	2	12	.167	0	0	0	0	0	0	2	0	0	
22 Collier, Ashley	3	0	0	0	.000	3	0	0	1	5	0	0	0	0	
23 Saddler, Erin	3	13	10	44	.068	1	0	2	3	4	0	1	0	0	
2 Croteau, Cami	3	0	0	1	.000	1	0	0	2	12	0	0	0	0	
8 Hart, Jonny	3	10	9	25	.040	0	0	0	0	0	0	0	0	0	
15 Brown, Torrie	3	3	3	12	.000	0	0	0	0	1	0	1	0	0	
Totals.....	3	36	30	113	.053	33	0	4	8	38	1	6	0	0	

TOTAL TEAM BLOCKS: 4.0

## Baylor	SP	K	E	TA	PCT	A	SA	SE	RE	DIG	BS	BA	BE	BHE
2 Trice, Caitlyn	3	0	0	1	.000	0	1	1	0	0	0	0	0	0
7 Campbell, Torri	3	6	3	15	.200	0	0	0	0	1	0	4	0	0
9 Barnes, Taylor	3	2	0	5	.400	29	3	1	0	7	0	1	1	0
14 Breyfogle, Anna	3	7	1	12	.500	0	0	1	0	0	1	5	0	0
22 Sanders, Katie	3	5	4	18	.056	0	1	1	0	6	0	4	0	0
31 Graham, Elizabeth	3	6	0	8	.750	0	0	0	0	3	0	4	0	0
8 King, Allison	3	0	0	0	.000	4	3	2	0	13	0	0	0	0
18 Rice, Jordan	3	0	0	0	.000	0	0	1	0	4	0	0	0	0
24 Christenson, Ashlie	3	8	1	25	.280	0	0	0	0	0	0	1	0	0
Totals.....	3	34	9	84	.298	33	8	7	0	34	1	19	1	0

TOTAL TEAM BLOCKS: 10.5

match 10

BAYLOR 3, NEW MEXICO 2

Sept. 11, 2009 - Albuquerque, N.M. (Johnson Center)

SET SCORES	1	2	3	4	5	TEAM RECORDS									
Baylor	25	24	25	20	15	10-0									
New Mexico	13	26	20	25	12	6-1									
## Baylor	SP	K	E	TA	PCT	A	SA	SE	RE	DIG	BS	BA	BE	BHE	
2 Trice, Caitlyn	5	0	1	2	-.500	0	1	0	0	10	0	0	0	0	
6 Byrd, Ashley	2	2	1	6	.167	0	0	0	0	1	0	1	0	0	
7 Campbell, Torri	5	10	3	27	.259	0	0	0	0	2	0	6	0	0	
9 Barnes, Taylor	5	8	1	15	.467	53	0	2	0	8	0	4	0	0	
14 Breyfogle, Anna	5	21	1	32	.625	1	0	1	0	1	0	7	1	0	
22 Sanders, Katie	5	14	7	47	.149	3	0	0	0	15	0	4	0	0	
8 King, Allison	5	0	0	0	.000	7	0	1	2	18	0	0	0	0	
18 Rice, Jordan	5	0	0	0	.000	1	0	1	1	18	0	0	0	0	
24 Christenson, Ashlie	5	11	7	35	.114	0	0	0	0	1	0	3	0	0	
31 Graham, Elizabeth	4	3	1	10	.200	0	0	0	0	3	0	1	0	0	
Totals.....	5	69	22	174	.270	65	1	5	3	77	0	26	1	0	

TOTAL TEAM BLOCKS: 13.0

## New Mexico	SP	K	E	TA	PCT	A	SA	SE	RE	DIG	BS	BA	BE	BHE
2 MEETER, Lisa	5	14	11	47	.064	3	0	0	1	14	1	0	0	0
4 RHOADES, Ashley	3	6	1	10	.500	1	0	1	0	2	0	1	0	0
6 MORRIS, Rose	5	20	7	57	.228	0	1	2	0	7	0	1	0	0
7 MICHAELSEN, Jade	5	6	2	20	.200	53	0	0	0	14	0	1	0	1
11 WONG, Amy	5	0	0	0	.000	1	2	3	0	11	0	0	0	0
14 LEHNE, Anna	5	13	4	31	.290	0	0	0	0	2	0	2	0	0
8 BUCK, Allison	5	0	1	3	-.333	3	0	1	0	23	0	0	0	0
9 SUITER, Allie	4	2	1	3	.333	1	0	1	0	0	0	1	0	0
12 HADFIELD, Taylor	5	5	3	18	.111	0	0	0	0	1	0	2	0	0
Totals.....	5	66	30	189	.190	62	3	8	1	74	1	8	0	1

TOTAL TEAM BLOCKS: 5.0

match 12

No. 2 TEXAS 3, No. 24 BAYLOR 0

Sept. 16, 2009 - Albuquerque, N.M. (Johnson Center)

SET SCORES	1	2	3	4	5	TEAM RECORDS									
Baylor	21	22	15			11-1, 0-1 Big 12									
Texas	25	25	25			6-0, 1-0 Big 12									
## Baylor	SP	K	E	TA	PCT	A	SA	SE	RE	DIG	BS	BA	BE	BHE	
2 Trice, Caitlyn	2	0	0	0	.000	0	0	0	0	0	0	0	0	0	
7 Campbell, Torri	3	7	4	17	.176	0	0	0	0	0	0	1	0	0	
9 Barnes, Taylor	3	2	2	8	.000	30	2	3	0	5	0	0	0	1	
14 Breyfogle, Anna	3	6	6	24	.000	0	0	1	0	2	1	4	0	0	
22 Sanders, Katie	3	5	5	23	.000	0	0	0	0	5	0	2	0	0	
31 Graham, Elizabeth	3	6	0	10	.600	0	0	0	0	1	0	4	0	0	
8 King, Allison	3	0	0	0	.000	0	0	3	1	11	0	0	0	0	
18 Rice, Jordan	3	0	0	0	.000	1	0	1	0	5	0	0	0	0	
20 Zhang, Qian	1	0	0	0	.000	0	0	2	0	1	0	0	0	0	
24 Christenson, Ashlie	3	8	4	22	.182	1	0	0	0	1	0	0	0	0	
TEAM										1					
Totals.....	3	34	21	104	.125	32	2	10	2	31	1	11	0	1	

TOTAL TEAM BLOCKS: 6.5

match-by-match summaries

match 13

No. 24 BAYLOR 3, KANSAS STATE 1 Sept. 19, 2009 - Waco, Texas (Ferrell Center)

SET SCORES	1	2	3	4	5	TEAM RECORDS
Kansas State	10	25	13	22		6-6, 0-2 Big 12
Baylor	25	20	25	25		12-1, 1-1 Big 12

##	Kansas State	SP	K	E	TA	PCT	A	SA	SE	RE	DIG	BS	BA	BE	BHE
1	Donahue, Caitlyn	4	0	2	5	.400	0	2	3	2	2	0	0	0	0
5	Ludwig, Kathleen	4	9	5	25	.160	0	1	1	0	15	0	0	1	0
6	Fay, Abby	4	0	0	1	.000	2	0	0	0	9	0	0	0	0
7	Pacheco, Soriana	4	1	0	4	.250	31	0	2	0	6	0	3	0	0
10	Horton, Audrey	4	1	3	7	.286	0	0	0	0	1	0	0	0	0
14	Chipman, Kelsey	4	7	3	19	.211	3	0	1	1	6	2	5	0	0
2	Mathewson, Lauren	4	0	0	0	.000	2	1	2	2	14	0	0	0	0
3	Murray, Vanessa	4	12	8	35	.114	0	0	0	0	4	0	2	1	0
11	Grot, Izabela	1	0	2	4	.500	0	0	0	0	0	0	0	0	0
12	Chisholm, JuliAnne	4	11	6	43	.116	0	0	0	0	1	0	0	0	0
16	Allison, Sarah	3	0	3	4	.750	1	0	0	0	0	0	0	0	0
Totals.....		4	41	32	147	.061	39	4	9	5	58	2	10	2	0

TOTAL TEAM BLOCKS: 7.0

##	Baylor	SP	K	E	TA	PCT	A	SA	SE	RE	DIG	BS	BA	BE	BHE
7	Campbell, Torri	3	4	3	13	.077	0	0	0	0	0	0	4	0	0
9	Barnes, Taylor	4	5	0	12	.417	39	2	2	0	8	0	3	0	0
14	Breyfogle, Anna	4	7	2	17	.294	1	0	1	0	3	0	6	0	0
18	Rice, Jordan	4	0	0	0	.000	0	1	0	0	8	0	0	0	0
22	Sanders, Katie	4	11	7	29	.138	3	0	0	4	17	0	2	0	0
24	Christenson, Ashlie	4	14	3	34	.324	0	0	0	0	4	0	4	2	0
2	Trice, Caitlyn	4	1	0	2	.500	1	0	0	0	4	0	0	0	0
8	King, Allison	4	0	0	1	.000	2	2	1	0	19	0	0	0	1
21	Tolbert, Briana	2	2	2	7	.000	0	0	0	0	0	0	1	0	0
31	Graham, Elizabeth	4	5	3	18	.111	0	0	0	0	2	0	2	0	0
Totals.....		4	49	20	133	.218	46	5	4	4	65	0	22	2	1

TOTAL TEAM BLOCKS: 11.0

match 15

No. 24 BAYLOR 3, KANSAS 0 Sept. 26, 2009 - Waco, Texas (Ferrell Center)

SET SCORES	1	2	3	4	5	TEAM RECORDS
Kansas	19	22	17			8-4, 1-2 Big 12
Baylor	25	25	25			14-1, 3-1 Big 12

##	Kansas	SP	K	E	TA	PCT	A	SA	SE	RE	DIG	BS	BA	BE	BHE
5	Tolefree, Taylor	3	2	3	7	.143	0	0	0	0	1	2	3	0	0
8	Mazour, Paige	3	3	1	11	.182	1	0	1	0	1	1	0	0	0
12	Kaiser, Jenna	3	7	2	17	.294	0	0	0	0	1	0	2	1	0
13	Tate, Nicole	3	2	2	7	.000	27	2	1	0	5	0	1	1	0
15	Mayfield, Allison	3	14	6	45	.178	0	0	0	2	3	0	0	0	0
16	Hagan, Lauren	3	3	4	10	.100	0	0	0	0	1	0	1	1	0
1	Manda, Melissa	3	0	0	0	.000	0	0	0	0	1	12	0	0	0
2	Martincich, Katie	3	0	0	0	.000	1	1	0	0	7	0	0	0	0
3	Townsend, Melissa	1	0	0	0	.000	0	0	0	0	0	0	0	0	0
4	Grieb, Melissa	3	0	0	0	.000	0	0	1	0	5	0	0	0	0
6	Boub, Morgan	1	0	0	0	.000	0	1	0	0	0	0	0	0	0
10	Williams, Brittany	2	0	2	3	.667	0	0	0	0	0	0	1	1	0
TEAM											5				
Totals.....		3	31	20	100	.110	29	4	3	8	36	3	8	4	0

TOTAL TEAM BLOCKS: 7.0

##	Baylor	SP	K	E	TA	PCT	A	SA	SE	RE	DIG	BS	BA	BE	BHE
7	Campbell, Torri	3	5	2	12	.250	1	0	0	0	0	1	2	0	0
9	Barnes, Taylor	3	5	1	10	.400	34	2	1	0	5	0	2	0	0
14	Breyfogle, Anna	3	12	3	19	.474	0	1	1	0	2	0	5	0	0
18	Rice, Jordan	3	0	0	0	.000	1	1	2	0	4	0	0	0	0
22	Sanders, Katie	3	8	2	21	.286	1	0	1	3	5	0	3	1	0
24	Christenson, Ashlie	3	4	5	16	.062	0	1	2	1	0	0	1	0	0
2	Trice, Caitlyn	3	0	0	0	.000	0	2	0	0	11	0	0	0	0
6	Byrd, Ashley	1	0	0	1	.000	0	0	0	0	0	0	0	0	0
8	King, Allison	3	0	0	1	.000	3	1	1	0	16	0	0	0	0
21	Tolbert, Briana	1	2	1	3	.333	0	0	0	0	0	1	1	0	0
31	Graham, Elizabeth	3	7	1	14	.429	0	0	0	0	0	0	2	0	0
Totals.....		3	43	15	97	.289	40	8	8	4	43	2	16	1	0

TOTAL TEAM BLOCKS: 10.0

match 14

No. 24 BAYLOR 3, No. 11 IOWA STATE 0 Sept. 23, 2009 - Waco, Texas (Ferrell Center)

SET SCORES	1	2	3	4	5	TEAM RECORDS
Iowa State	23	19	31			9-2, 1-2 Big 12
Baylor	25	25	33			13-1, 2-1 Big 12

##	Iowa State	SP	K	E	TA	PCT	A	SA	SE	RE	DIG	BS	BA	BE	BHE
3	Hockaday, Rachel	3	11	7	42	.095	1	0	0	1	8	0	0	1	0
6	Manns, Kaylee	3	2	2	7	.000	41	0	2	0	9	0	2	0	1
7	Mahoney, Caitlin	3	0	0	0	.000	0	0	1	0	8	0	0	0	0
10	Henson, Victoria	3	17	8	51	.176	1	0	2	0	12	0	2	0	0
11	Kieger, Diane	3	4	1	13	.231	0	0	1	0	0	0	5	0	0
12	Stadick, Debbie	3	7	2	22	.227	0	0	0	0	1	1	3	1	0
2	Mass, Ashley	3	0	0	0	.000	1	0	0	1	33	0	0	0	0
8	Petersen, Kelsey	3	7	1	19	.316	0	0	0	0	1	0	4	0	0
14	Straube, Jamie	1	0	0	3	.000	0	1	1	0	0	0	0	0	0
Totals.....		3	48	21	157	.172	44	1	7	2	72	1	16	2	1

TOTAL TEAM BLOCKS: 9.0

##	Baylor	SP	K	E	TA	PCT	A	SA	SE	RE	DIG	BS	BA	BE	BHE
7	Campbell, Torri	3	10	4	24	.250	0	0	0	0	3	1	5	0	0
9	Barnes, Taylor	3	10	1	19	.474	38	0	3	0	11	0	2	0	0
14	Breyfogle, Anna	3	5	2	17	.176	0	0	0	0	8	1	5	1	0
22	Sanders, Katie	3	9	7	45	.044	5	0	0	1	16	1	2	0	0
24	Christenson, Ashlie	3	11	3	27	.296	0	0	0	0	1	0	1	0	0
31	Graham, Elizabeth	3	7	1	20	.300	0	0	0	0	1	0	6	0	0
2	Trice, Caitlyn	3	0	0	0	.000	0	0	0	0	12	0	0	0	0
8	King, Allison	3	0	0	1	.000	2	2	0	0	17	0	0	0	1
18	Rice, Jordan	3	0	0	0	.000	4	0	1	0	10	0	0	0	0
Totals.....		3	52	18	153	.222	49	2	4	1	79	3	21	1	1

TOTAL TEAM BLOCKS: 13.5

match 16

No. 24 BAYLOR 3, MISSOURI 0 Sept. 30, 2009 - Waco, Texas (Ferrell Center)

SET SCORES	1	2	3	4	5	TEAM RECORDS
Missouri	13	18	23			10-5, 2-2 Big 12
Baylor	25	25	25			15-1, 4-1 Big 12

##	Missouri	SP	K	E	TA	PCT	A	SA	SE	RE	DIG	BS	BA	BE	BHE
1	Wang-Francisco, Lei	3	0	0	3	.000	30	0	1	0	11	0	0	1	0
2	Brimmage, Brittney	1	0	1	2	.500	0	0	0	0	0	0	0	0	0
6	Klein, Julianna	3	8	6	22	.091	1	0	1	2	7	0	0	0	0
9	Amputia, Paola	3	8	7	37	.027	0	0	1	0	5	1	2	0	0
10	Armenariz, Priscill	3	0	0	0	.000	0	0	2	0	4	0	0	0	0
15	Wilson, Catie	3	8	2	16	.375	0	0	0	0	0	0	1	0	0
3	Vann, Caitlyn	3	0	0	0	.000	1	0	1	0	14	0	0	0	0
4	Hantouli, Amanda	2	2	0	4	.500	0	0	0	0	1	0	2	0	0
7	Medrano, Rosa	3	7	5	23	.087	0	0	0	0	2	0	1	0	0
8	Harris, Kate	1	0	0	1	.000	2	0	0	0	0	0	0	0	0
12	Lopez, Annie	2	0	0	0	.000	0	0	0	1	1	0	0	0	0
13	Wang, Weiwen	2	2	1	5	.200	0	0	0	0	1	0	0	0	0
TEAM											1				
Totals.....		3	35	22	113	.115	34	0	6	4	46	1	6	1	0

TOTAL TEAM BLOCKS: 4.0

##	Baylor	SP	K	E	TA	PCT	A	SA	SE	RE	DIG	BS	BA	BE	BHE
7	Campbell, Torri	3	6	2	17	.235	0	0	0	0	0	0	3	0	0
9	Barnes, Taylor	3	2	2	8	.000	34	2	1	0	10	0	3	0	0
14	Breyfogle, Anna	3	8	2	12	.500	0	0	0	0</					

match-by-match summaries

match 17

No. 19 BAYLOR 3, COLORADO 0

Oct. 3, 2009 • Boulder, Colo. (Coors Events Center)

SET SCORES	1	2	3	4	5	TEAM RECORDS
Baylor	25	25	25			16-1, 5-1 Big 12
Colorado	14	19	15			5-10, 0-6 Big 12

## Baylor	SP	K	E	TA	PCT	A	SA	SE	RE	DIG	BS	BA	BE	BHE
7 Campbell, Torri	3	7	2	14	.357	0	0	0	0	0	0	2	0	0
9 Barnes, Taylor	3	7	1	12	.500	41	1	2	0	3	0	0	1	0
14 Breyfogle, Anna	3	8	1	16	.438	0	0	1	0	1	0	1	0	0
22 Sanders, Katie	3	12	5	29	.241	1	0	0	1	13	0	2	0	0
24 Christenson, Ashlie	3	10	1	26	.346	1	0	0	0	2	0	2	0	0
31 Graham, Elizabeth	2	2	1	7	.143	0	0	0	0	0	0	0	0	0
2 Trice, Caitlyn	3	1	0	2	.500	0	1	0	0	11	0	0	0	0
6 Byrd, Ashley	1	0	0	1	.000	0	0	0	0	0	0	1	0	0
8 King, Allison	3	0	0	1	.000	5	0	0	0	18	0	0	0	0
18 Rice, Jordan	3	0	0	0	.000	1	0	1	0	7	0	0	0	0
20 Zhang, Qian	2	1	0	3	.333	0	0	0	0	2	0	0	0	0
21 Tolbert, Briana	2	3	1	9	.222	0	0	0	0	1	0	0	0	0
Totals.....	3	51	12	120	.325	49	2	4	1	58	0	8	1	0

TOTAL TEAM BLOCKS: 4.0

## Colorado	SP	K	E	TA	PCT	A	SA	SE	RE	DIG	BS	BA	BE	BHE
2 Edelman, Schylur	3	3	1	6	.333	0	0	1	0	2	0	0	0	0
6 Schroeder, Kerra	3	6	5	32	.031	0	0	0	0	9	0	0	0	0
8 Kinzer, Nikki	3	2	1	5	.200	0	0	0	0	0	1	1	0	1
11 Steinhilber, Rosie	3	9	5	31	.129	0	1	1	0	11	0	1	1	0
21 Fogle, Becah	3	10	2	39	.205	1	0	0	0	10	1	0	0	0
22 Burkett, Kaitlyn	3	0	0	1	.000	23	0	1	0	6	0	0	0	0
3 Lindroth, Sofia	1	0	0	0	.000	0	0	2	2	5	0	0	0	0
13 Cyr, Megan	1	1	1	2	.000	5	0	0	0	0	0	0	0	0
15 Warnock, Kassidi	1	0	0	0	.000	1	0	0	0	0	0	0	0	0
17 Penewell, Alex	1	0	0	0	.000	0	0	0	0	0	0	0	0	0
23 Henry, Ellen	2	0	0	0	.000	0	0	1	0	8	0	0	0	0
Totals.....	3	31	15	116	.138	30	1	6	2	51	2	2	1	1

TOTAL TEAM BLOCKS: 3.0

match 18

No. 17 BAYLOR 3, TEXAS TECH 0

Oct. 7, 2009 • Lubbock, Texas (United Spirit Arena)

SET SCORES	1	2	3	4	5	TEAM RECORDS
Baylor	25	25	25			17-1, 6-1 Big 12
TTU	19	23	20			2-12, 0-5 Big 12

## Baylor	SP	K	E	TA	PCT	A	SA	SE	RE	DIG	BS	BA	BE	BHE
7 Campbell, Torri	3	9	1	11	.727	1	0	0	0	0	0	2	0	0
9 Barnes, Taylor	3	4	0	6	.667	42	0	1	0	4	0	2	0	0
14 Breyfogle, Anna	3	11	2	20	.450	0	1	0	0	0	1	4	0	0
18 Rice, Jordan	3	0	0	0	.000	2	0	2	0	5	0	0	0	0
22 Sanders, Katie	3	13	6	29	.241	3	0	0	0	8	0	2	0	0
24 Christenson, Ashlie	3	7	5	27	.074	0	0	0	0	4	0	1	0	0
2 Trice, Caitlyn	3	0	0	0	.000	0	0	0	0	4	0	0	0	0
6 Byrd, Ashley	1	0	1	1	-1.000	0	0	0	0	0	0	0	0	0
8 King, Allison	3	0	1	1	-1.000	3	0	0	0	9	0	0	0	0
20 Zhang, Qian	1	1	0	1	1.000	0	0	0	1	2	0	0	0	0
21 Tolbert, Briana	1	2	0	2	1.000	0	0	0	0	0	0	0	0	0
31 Graham, Elizabeth	3	6	3	12	.250	1	0	0	0	0	0	1	0	0
Totals.....	3	53	19	110	.309	52	1	3	1	36	1	12	0	0

TOTAL TEAM BLOCKS: 7.0

## TTU	SP	K	E	TA	PCT	A	SA	SE	RE	DIG	BS	BA	BE	BHE
1 Ball, Hayley	3	4	2	18	.111	0	0	0	0	1	0	1	0	0
2 Courtney, Caroline	3	4	3	14	.071	0	0	0	0	2	0	1	0	0
3 Meyers, Karlyn	3	5	1	14	.286	29	0	0	0	1	0	2	0	0
6 Vincent, Jackie	1	0	0	0	.000	1	0	0	0	1	0	0	0	0
10 Hayes, Aleah	3	0	0	2	.000	0	0	0	0	3	0	0	0	0
11 Dowdy, Amanda	3	11	7	26	.154	1	0	2	0	8	1	2	1	0
5 Vaughan, Tory	3	0	0	1	.000	4	0	0	0	8	0	0	0	0
8 Cave, Miara	3	7	3	16	.250	0	0	0	0	0	0	1	0	0
9 Goehry, Jenn	3	0	0	0	.000	1	1	0	1	4	0	0	0	0
13 Conceicao, Barbara	3	6	3	13	.231	0	0	0	0	1	2	3	0	0
Totals.....	3	37	19	104	.173	36	1	2	1	29	3	10	1	0

TOTAL TEAM BLOCKS: 8.0

match 19

(rv) TEXAS A&M 3, NO. 19 BAYLOR 1

Oct. 10, 2009 • Waco, Texas (Ferrell Center)

SET SCORES	1	2	3	4	5	TEAM RECORDS
Texas A&M	25	31	12	25		12-3, 5-2 Big 12
Baylor	18	29	25	23		17-2, 6-2 Big 12

## Texas A&M	SP	K	E	TA	PCT	A	SA	SE	RE	DIG	BS	BA	BE	BHE
9 Schevikhoven, Kristen	4	5	0	9	.556	51	0	0	0	12	0	1	0	0
10 Kastmo, Alisia	4	7	2	16	.312	0	0	5	0	1	0	0	0	0
12 Ammerman, Sarah	4	20	6	54	.259	1	0	0	0	15	0	0	1	0
14 Miller, Lindsey	4	7	4	18	.167	1	0	0	0	0	0	2	0	0
15 Banse, Jennifer	4	16	2	45	.311	0	1	2	2	10	0	1	1	0
25 Batis, Mary	4	11	4	38	.184	3	2	0	1	21	0	0	0	0
1 Mellinger, Tori	4	1	0	2	.500	7	2	0	1	24	0	0	0	0
2 Black, Kelsey	3	0	0	0	.000	0	0	3	0	3	0	0	0	0
21 Adams, Caitlin	1	0	0	0	.000	0	0	0	0	0	0	0	0	0
Totals.....	4	67	18	182	.269	63	5	10	4	86	0	4	2	0

TOTAL TEAM BLOCKS: 2.0

## Baylor	SP	K	E	TA	PCT	A	SA	SE	RE	DIG	BS	BA	BE	BHE
7 Campbell, Torri	4	12	3	27	.333	0	0	0	0	0	0	2	0	0
9 Barnes, Taylor	4	4	1	12	.250	51	3	1	0	14	0	0	0	0
14 Breyfogle, Anna	4	12	3	29	.310	1	0	0	0	3	0	7	2	0
22 Sanders, Katie	4	8	6	44	.045	2	0	0	0	17	0	6	0	0
24 Christenson, Ashlie	4	20	2	48	.375	0	0	0	1	5	0	1	0	0
31 Graham, Elizabeth	2	1	0	6	.167	0	0	0	0	0	0	1	0	0
2 Trice, Caitlyn	4	1	0	1	1.000	0	0	0	2	12	0	0	0	0
6 Byrd, Ashley	3	4	1	6	.500	0	0	0	0	0	0	4	0	0
8 King, Allison	4	0	0	0	.000	4	0	1	1	23	0	0	0	0
18 Rice, Jordan	4	0	0	0	.000	0	1	2	0	7	0	0	0	0
TEAM										1				
Totals.....	4	62	16	173	.266	58	4	4	5	81	0	20	3	0

TOTAL TEAM BLOCKS: 10.0

match 20

No. 7 NEBRASKA 3, NO. 19 BAYLOR 0

Oct. 14, 2009 • Waco, Texas (Ferrell Center)

SET SCORES	1	2	3	4	5	TEAM RECORDS
Nebraska	28	25	25			13-4, 6-2 Big 12
Baylor	26	17	17			17-3, 6-3 Big 12

## Nebraska	SP	K	E	TA	PCT	A	SA	SE	RE	DIG	BS	BA	BE	BHE
1 Anderson, Sydney	3	2	1	4	.250	39	0	0	0	10	1	1	0	0
4 Licht, Lindsey	3	9	3	21	.286	0	0	0	0	2	1	4	0	0
8 Delano, Brooke	3	10	2	17	.471	0	1	1	0	3	0	4	1	0
15 Cooper, Kori	3	10	2	21	.381	0	0	0	0	1	0	2	0	0
19 Mueller, Tara	3	8	4	25	.160	0	1	1	1	5	0	0	1	0
44 Werth, Hannah	3	13	2	29	.379	1	0	1	2	12	0	1	0	0
2 Banwarth, Kayla	3	0	0	0	.000	5	0	1	0	22	0	0	0	0
7 Mancuso, Gina	3	0	0	4	.000	1	2	0	0	1	0	0	0	0
16 McNeal, Allison	1	1	0	1	1.000	0	0	0	0	0	0	0	0	0
Totals.....	3	53	14	122	.320	46	4	4	3	56	2	12	2	0

TOTAL TEAM BLOCKS: 8.0

## Baylor	SP	K	E	TA	PCT	A	SA	SE	RE	DIG	BS	BA	BE	BHE
6 Byrd, Ashley	3	4	0	17	.235	0	0	0	0	1	0	2	0	0
7 Campbell, Torri	3	5	2	12	.250	0	0	0	0	0	1	3	0	0
9 Barnes, Taylor	3	3	0	7	.429	30	0	0	0	3	0	1	0	0
14 Breyfogle, Anna	3	6	2	13	.308	1	0	1	0	3	0	2	1	0
22 Sanders, Katie	3	12	5	46	.152	1	0	0	3	10	0	2	0	0
24 Christenson, Ashlie	3	4	6	19	-.105	0	0	0	0	0	0	1	1	0
2 Trice, Caitlyn	3	0	0	0	.000	0	2	2	0	10	0	0	0	0
8 King, Allison	3	0												

match-by-match summaries

match 21

OKLAHOMA 3, NO. 19 BAYLOR 2

Oct. 17, 2009 • Norman, Okla. (McCasland Field House)

SET SCORES	1	2	3	4	5	TEAM RECORDS									
Baylor	13	25	17	25	12	17-4 (6-4 Big 12)									
Oklahoma	25	21	25	19	15	12-6 (5-4 Big 12)									
## Baylor	SP	K	E	TA	PCT	A	SA	SE	RE	DIG	BS	BA	BE	BHE	
7 Campbell, Torri	5	11	6	33	.152	0	0	0	0	1	2	4	1	0	
9 Barnes, Taylor	5	7	0	16	.438	50	1	0	0	12	0	3	0	0	
14 Breyfogle, Anna	5	11	7	33	.121	0	0	1	0	1	0	3	0	0	
22 Sanders, Katie	5	12	8	54	.074	5	0	1	1	10	0	0	0	0	
24 Christenson, Ashlie	5	10	4	36	.167	0	0	0	0	1	0	1	0	0	
31 Graham, Elizabeth	5	9	1	22	.364	0	0	0	0	3	0	3	0	0	
2 Trice, Caitlyn	5	0	0	0	.000	0	1	2	1	10	0	0	0	0	
8 King, Allison	5	0	0	0	.000	2	1	3	0	23	0	0	0	0	
18 Rice, Jordan	5	0	0	0	.000	2	0	1	0	10	0	0	0	0	
20 Zhang, Qian	1	0	0	0	.000	0	1	0	1	5	0	0	0	0	
21 Tolbert, Briana	2	1	2	5	-.200	0	0	1	0	0	0	0	0	0	
Totals.....	5	61	28	199	.166	59	4	9	3	76	2	14	1	0	

TOTAL TEAM BLOCKS: 9.0

## Oklahoma	SP	K	E	TA	PCT	A	SA	SE	RE	DIG	BS	BA	BE	BHE
1 Barker, Brienne	5	3	3	11	.000	52	1	1	0	11	0	1	0	0
2 Boulavsky, Suzy	5	21	1	44	.455	3	1	1	0	20	1	4	0	0
9 Laplante, Bridget	5	8	3	34	.147	1	0	1	0	12	0	0	0	0
10 Higgins, Caitlin	5	7	9	36	-.056	0	1	2	0	19	1	0	1	0
11 Ekwerenkwu, Francie	5	11	3	28	.286	0	0	0	0	4	2	2	0	0
13 Freudenrich, Sarah	5	12	1	26	.423	1	0	0	0	0	4	5	2	0
4 Fernanda, Maria	5	0	0	0	.000	4	0	1	3	27	0	0	0	0
12 Disarro, Chrissy	2	1	0	1	1.000	0	0	0	0	0	0	0	0	0
TEAM										1				
Totals.....	5	63	20	180	.239	61	3	6	4	93	8	12	3	0

TOTAL TEAM BLOCKS: 14.0

match 23

NO. 9 IOWA STATE 3, NO. 22 BAYLOR 2

Oct. 28, 2009 • Ames Iowa (Hilton Coliseum)

SET SCORES	1	2	3	4	5	TEAM RECORDS									
Baylor	26	21	23	25	14	18-5, 7-5 Big 12									
Iowa State	24	25	25	23	16	18-3, 10-2 Big 12									
## Baylor	SP	K	E	TA	PCT	A	SA	SE	RE	DIG	BS	BA	BE	BHE	
2 Trice, Caitlyn	5	1	0	1	1.000	1	1	2	1	17	0	0	0	0	
7 Campbell, Torri	5	18	6	49	.245	0	0	0	0	1	0	9	1	0	
9 Barnes, Taylor	5	6	4	19	.105	50	3	2	0	19	0	3	0	1	
14 Breyfogle, Anna	5	9	3	30	.200	0	0	2	0	3	0	4	0	0	
22 Sanders, Katie	5	9	8	52	.019	2	0	0	0	13	1	4	0	0	
31 Graham, Elizabeth	5	10	3	33	.212	0	0	0	0	2	0	7	0	0	
8 King, Allison	5	0	0	2	.000	5	0	2	1	32	0	0	0	0	
18 Rice, Jordan	5	0	0	0	.000	1	0	0	0	13	0	0	0	0	
20 Zhang, Qian	1	1	1	7	.000	0	0	0	0	0	0	0	0	0	
24 Christenson, Ashlie	5	9	6	43	.070	0	0	0	0	4	0	2	1	0	
TEAM										1					
Totals.....	5	63	31	236	.136	59	4	8	3	104	1	29	2	1	

TOTAL TEAM BLOCKS: 15.5

## Iowa State	SP	K	E	TA	PCT	A	SA	SE	RE	DIG	BS	BA	BE	BHE
3 Hockaday, Rachel	5	15	12	71	.042	0	0	0	0	16	0	1	0	0
6 Manns, Kaylee	5	3	0	6	.500	58	0	1	0	25	0	2	0	0
8 Petersen, Kelsey	5	11	7	37	.108	0	0	0	0	4	0	1	2	0
10 Henson, Victoria	5	24	6	58	.310	1	1	1	3	22	1	3	1	0
12 Stadick, Debbie	5	10	6	33	.121	1	0	0	0	0	2	1	1	1
14 Straube, Jamie	5	5	3	23	.087	1	1	1	0	2	1	5	0	0
2 Mass, Ashley	5	0	0	0	.000	2	0	0	0	42	0	0	0	0
7 Mahoney, Caitlin	5	0	0	0	.000	1	1	2	1	11	0	0	0	0
16 Knuth, Taylor	1	0	0	0	.000	0	0	0	0	0	0	0	0	0
Totals.....	5	68	34	228	.149	64	3	5	4	122	2	14	4	1

TOTAL TEAM BLOCKS: 9.0

match 22

No. 23 BAYLOR 3, KANSAS STATE 1

Oct. 24, 2009 • Manhattan, Kan. (Ahearn Field House)

SET SCORES	1	2	3	4	5	TEAM RECORDS									
Baylor	18	25	25	30		18-4, 7-4 Big 12									
Kansas State	25	16	18	28		8-12, 2-8 Big 12									
## Baylor	SP	K	E	TA	PCT	A	SA	SE	RE	DIG	BS	BA	BE	BHE	
7 Campbell, Torri	4	14	5	32	.281	0	0	0	0	2	0	4	0	0	
9 Barnes, Taylor	4	8	3	14	.357	54	1	1	0	14	0	1	0	1	
14 Breyfogle, Anna	4	13	1	25	.480	0	0	1	0	1	0	7	1	0	
20 Zhang, Qian	2	1	0	5	.200	0	0	0	0	2	0	0	0	0	
22 Sanders, Katie	4	14	5	42	.214	0	2	2	1	18	0	1	0	0	
31 Graham, Elizabeth	4	14	4	30	.333	0	0	0	0	2	0	6	0	0	
2 Trice, Caitlyn	3	0	0	1	.000	1	1	0	0	10	0	0	0	0	
8 King, Allison	4	0	0	0	.000	10	1	4	5	18	0	0	0	0	
18 Rice, Jordan	4	0	0	0	.000	1	1	2	0	7	0	0	0	0	
24 Christenson, Ashlie	4	3	6	19	-.158	0	0	2	0	4	0	3	1	0	
Totals.....	4	67	24	168	.256	66	6	12	6	78	0	22	2	1	

TOTAL TEAM BLOCKS: 11.0

## Kansas State	SP	K	E	TA	PCT	A	SA	SE	RE	DIG	BS	BA	BE	BHE
1 Donahue, Caitlyn	4	1	0	2	.500	1	0	0	0	12	0	0	0	0
5 Ludwig, Kathleen	4	7	7	27	.000	0	1	0	0	16	0	6	0	0
7 Pacheco, Soriana	4	1	2	5	-.200	35	1	1	0	7	0	2	0	0
9 Muff, Alex	4	5	1	13	.308	0	0	0	0	0	0	5	0	0
12 Chisholm, JuliAnne	4	10	4	44	.136	1	0	0	0	5	1	0	1	0
14 Chipman, Kelsey	4	8	2	29	.207	0	3	1	0	0	1	3	0	0
2 Mathewson, Lauren	4	0	0	0	.000	2	1	0	3	18	0	0	0	0
3 Murray, Vanessa	4	10	5	33	.152	1	0	0	0	2	1	0	1	0
6 Fay, Abby	4	0	0	0	.000	0	0	0	1	6	0	0	0	0
TEAM										2				
Totals.....	4	42	21	153	.137	40	6	2	6	66	3	16	2	0

TOTAL TEAM BLOCKS: 11.0

match 24

No. 22 BAYLOR 3, TEXAS TECH 0

Oct. 31, 2009 • Waco, Texas (Ferrell Center)

SET SCORES	1	2	3	4	5	TEAM RECORDS									
TTU	17	20	23			2-19, 0-12 Big 12									
Baylor	25	25	25			19-5, 8-5 Big 12									
## TTU	SP	K	E	TA	PCT	A	SA	SE	RE	DIG	BS	BA	BE	BHE	
1 Ball, Hayley	3	1	1	12	.000	0	0	0	3	6	0	1	0	0	
3 Meyers, Karlyn	3	5	0	9	.556	23	0	0	0	4	0	3	0	0	
8 Cave, Miara	3	6	2	17	.235	0	0	0	0	1	0	3	0	0	
11 Dowdy, Amanda	3	11	2	23	.391	0	0	0	0	0	0	2	0	0	
13 Conceicao, Barbara	3	4	4	20	.000	0	0	0	0	0	1	3	2	0	
17 Witte, Caroline	3	5	4	22	.045	0	0	0	0	2	7	0	0	0	
6 Vincent, Jackie	3	0	0	0	.000	4	0	0	3	7	0	0	0	0	
9 Goehry, Jenn	3	0	0	0	.000	0	0	2	1	13	0	0	0	0	
10 Hayes, Aleah	3	0	0	0	.000	1	0	0	0	8	0	0	0	0	
Totals.....	3	32	13	103	.184	28	0	2	9	46	1	12	2	0	

TOTAL TEAM BLOCKS: 7.0

## Baylor	SP	K	E	TA	PCT	A	SA	SE	RE	DIG	BS	BA	BE	BHE
2 Trice, Caitlyn	3	0	0	0	.000	0	1	4	0	4	0	0	0	0
7 Campbell, Torri	3	1												

match-by-match summaries

match 25

OKLAHOMA 3, NO. 20 BAYLOR 0

Nov. 4, 2009 - Waco, Texas (Ferrell Center)

SET SCORES	1	2	3	4	5	TEAM RECORDS
Oklahoma	25	25	25			16-7, 9-5 Big 12
Baylor	22	20	22			19-6, 8-6 Big 12

# Oklahoma	SP	K	E	TA	PCT	A	SA	SE	RE	DIG	BS	BA	BE	BHE
1 Barker, Brianne	3	4	2	8	.250	44	0	0	0	10	0	2	0	0
2 Boulavsky, Suzy	3	13	3	35	.286	0	0	0	0	9	0	2	0	0
9 Laplante, Bridget	3	4	2	15	.133	2	0	0	1	15	0	1	0	0
10 Higgins, Caitlin	3	10	4	23	.261	0	2	2	1	5	1	1	1	0
11 Ekwerekwu, Francie	3	18	1	26	.654	0	0	0	0	2	0	1	0	0
13 Freudenrich, Sarah	3	3	2	15	.067	1	0	0	0	1	0	3	1	0
4 Fernanda, Maria	3	0	0	0	.000	4	0	1	0	11	0	0	0	0
6 Alva, Danielle	3	0	0	0	.000	0	0	0	0	2	0	0	0	0
Totals.....	3	52	14	122	.311	51	2	3	2	55	1	10	2	0

TOTAL TEAM BLOCKS: 6.0

# Baylor	SP	K	E	TA	PCT	A	SA	SE	RE	DIG	BS	BA	BE	BHE
2 Trice, Caitlyn	3	0	0	0	.000	2	0	0	0	10	0	0	0	1
7 Campbell, Torri	3	8	3	20	.250	0	0	0	0	0	0	5	0	0
9 Barnes, Taylor	3	8	0	13	.615	31	0	1	0	10	0	1	0	0
14 Breyfogle, Anna	3	5	3	18	.111	0	0	1	0	0	0	1	1	1
18 Rice, Jordan	3	0	0	0	.000	2	0	1	0	7	0	0	0	0
22 Sanders, Katie	3	11	2	25	.360	1	1	0	0	7	0	2	0	0
8 King, Allison	3	0	0	0	.000	6	1	1	2	9	0	0	0	0
21 Tolbert, Briana	1	0	0	1	.000	0	0	0	0	0	0	1	0	0
24 Christenson, Ashlie	3	6	3	24	.125	0	0	0	0	4	0	1	1	0
31 Graham, Elizabeth	3	7	3	21	.190	0	0	0	0	0	0	4	0	0
Totals.....	3	45	14	122	.254	42	2	4	2	47	0	15	2	2

TOTAL TEAM BLOCKS: 7.5

cumulative overall stats

Baylor Combined Team Statistics (as of Nov 05, 2009) All matches

RECORD:	OVERALL	HOME	AWAY	NEUTRAL
ALL GAMES	19-6	9-3	6-3	4-0
CONFERENCE	8-6	5-3	3-3	0-0
NON-CONFERENCE	11-0	4-0	3-0	4-0

#	Player	sp	Attack				Set		Serve			Dig			Blocking					points			
			k	k/s	e	ta	pct	a	a/s	sa	se	sa/s	re	dig	dig/s	bs	ba	total	blk/s		be	bhe	
18	Rice, Jordan	87	1	0.01	0	1	1.000	29	0.33	15	27	0.17	3	171	1.97	0	0	0	0.00	0	0	16.0	
9	Barnes, Taylor	87	115	1.32	25	255	.353	946	10.87	38	42	0.44	0	211	2.43	0	44	44	0.51	4	8	175.0	
14	Breyfogle, Anna	85	220	2.59	57	468	.348	10	0.12	8	22	0.09	0	49	0.58	11	106	117	1.38	10	1	292.0	
31	Graham, Elizabeth	64	118	1.84	28	300	.300	1	0.02	2	1	0.03	1	25	0.39	2	57	59	0.92	2	1	150.5	
7	Campbell, Torri	75	175	2.33	60	426	.270	3	0.04	0	0	0.00	0	17	0.23	5	70	75	1.00	3	1	215.0	
2	Trice, Caitlyn	85	5	0.06	1	16	.250	9	0.11	14	23	0.16	14	201	2.36	0	0	0	0.00	0	1	19.0	
20	Zhang, Qian	14	12	0.86	3	39	.231	1	0.07	2	2	0.14	3	20	1.43	0	4	4	0.29	0	0	16.0	
6	Byrd, Ashley	35	57	1.63	23	150	.227	4	0.11	0	0	0.00	0	6	0.17	1	19	20	0.57	6	1	67.5	
21	Tolbert, Briana	21	34	1.62	15	84	.226	0	0.00	0	1	0.00	0	2	0.10	1	8	9	0.43	2	0	39.0	
24	Christenson, Ashlie	86	223	2.59	96	634	.200	6	0.07	1	4	0.01	3	48	0.56	1	36	37	0.43	8	0	243.0	
22	Sanders, Katie	87	276	3.17	115	859	.187	36	0.41	9	9	0.10	31	270	3.10	3	52	55	0.63	4	1	314.0	
8	King, Allison	88	2	0.02	2	20	.000	95	1.08	15	36	0.17	17	393	4.47	0	0	0	0.00	0	4	17.0	
1	Ridenour, Brittany	5	1	0.20	2	5	-.200	26	5.20	0	2	0.00	0	4	0.80	0	4	4	0.80	0	2	3.0	
	TEAM	-	-	-	-	-	-	-	-	-	-	-	4	-	-	-	-	-	-	-	-	-	-
	BAYLOR	88	1239	14.08	427	3257	.249	1166	13.25	104	169	1.18	76	1417	16.10	24	400	224.0	2.55	39	20	1567.0	
	Opponents	88	1059	12.03	534	3273	.160	985	11.19	76	146	0.86	104	1403	15.94	48	222	159.0	1.81	44	16	1294.0	

Team Statistics	BU	OPP	Date	Opponent	Score	Score by set	Att.		
ATTACK									
Kills	1239	1059	@Aug 28	vs SLU	W	3-0	25-22,25-15,25-15	0	
Errors	427	534	@Aug 28	at Houston	W	3-0	25-19,25-13,25-18	347	
Total Attacks	3257	3273	@Aug 29	vs New Orleans	W	3-0	25-20,26-24,25-21	363	
Attack Pct	.249	.160	Sep 01	at TCU Horned Frogs	W	3-2	28-26,17-25,22-25,25-9,15-13	861	
Kills/Set	14.1	12.0	!Sep 04	UCF	W	3-0	25-9,25-18,25-16	429	
SET									
Assists	1166	985	!Sep 05	UTSA	W	3-0	25-18,25-18,25-16	0	
Assists/Set	13.2	11.2	!Sep 05	#24 PURDUE	W	3-2	21-25,25-20,25-23,23-25,15-13	756	
SERVE									
Aces	104	76	Sep 08	TEXAS STATE	W	3-0	25-14,25-13,25-22	407	
Errors	169	146	%Sep 11	vs Pittsburgh	W	3-0	25-16,25-21,25-18	73	
Aces/Set	1.2	0.9	%Sep 11	at New Mexico	W	3-2	25-13,24-26,25-20,20-25,15-12	1911	
SERVE RECEPTIONS									
Errors	76	104	%Sep 12	vs Cal State Fullerton	W	3-0	25-11,25-17,26-24	63	
Errors/Set	0.9	1.2	*Sep 16	at #2 Texas	L	0-3	21-25,22-25,15-25	2237	
Attempts	1643	1866	*Sep 19	KANSAS STATE	W	3-1	25-10,20-25,25-13,25-22	550	
Reception Pct	.954	.944	*Sep 23	#11 IOWA STATE	W	3-0	25-23,25-19,33-31	614	
DEFENSE									
Digs	1417	1403	*Sep 26	KANSAS	W	3-0	25-19,25-22,25-17	544	
Digs/Set	16.1	15.9	*Sep 30	MISSOURI	W	3-0	25-13,25-18,25-23	648	
BLOCKING									
Block Solo	24	48	*Oct 03	at Colorado	W	3-0	25-14,25-19,25-15	904	
Block Assist	400	222	*Oct 07	at TTU	W	3-0	25-19,25-23,25-20	561	
Total Blocks	224.0	159.0	*Oct 10	TEXAS A&M	L	1-3	18-25,29-31,25-12,23-25	3022	
Blocks/Set	2.5	1.8	*Oct 14	#7 NEBRASKA	L	0-3	26-28,17-25,17-25	1257	
Block Errors	39	44	*Oct 17	at Oklahoma	L	2-3	13-25,25-21,17-25,25-19,12-15	290	
Ball handling errors	20	16	*Oct 24	at Kansas State	W	3-1	18-25,25-16,25-18,30-28	2356	
ATTENDANCE									
Total	9743	11357	*Oct 28	at #9 Iowa State	L	2-3	26-24,21-25,23-25,25-23,14-16	1890	
Dates/Avg Per Date	12/812	9/1262	*Oct 31	TTU	W	3-0	25-17,25-20,25-23	807	
Neutral site #/Avg	4/125	-	*Nov 04	OKLAHOMA	L	0-3	22-25,20-25,22-25	709	
Current win streak	0	-						@ Flo Hyman Invitational (Houston, Texas)	
Home win streak	0	-						! Holiday Inn and Suites Baylor Classic (Waco, Texas)	
								% Comcast Lobo Challenge (Albuquerque, N.M.)	
								Record in 3-set matches: 14-3	
								Record in 4-set matches: 2-1	
								Record in 5-set matches: 3-2	

cumulative conference-only stats

Baylor Combined Team Statistics (as of Nov 05, 2009) Conference matches

RECORD:	OVERALL	HOME	AWAY	NEUTRAL
ALL GAMES	8-6	5-3	3-3	0-0
CONFERENCE	8-6	5-3	3-3	0-0
NON-CONFERENCE	0-0	0-0	0-0	0-0

#	Player	sp	Attack				Set		Serve			Dig		Blocking					points			
			k	k/s	e	ta	pct	a	a/s	sa	se	sa/s	re	dig	dig/s	bs	ba	total		blk/s	be	bhe
2	Trice, Caitlyn	47	4	0.09	0	7	.571	5	0.11	9	11	0.19	4	125	2.66	0	0	0	0.00	0	1	13.0
9	Barnes, Taylor	49	76	1.55	16	165	.364	565	11.53	23	21	0.47	0	125	2.55	0	23	23	0.47	1	4	110.5
14	Breyfogle, Anna	49	123	2.51	39	292	.288	5	0.10	3	12	0.06	0	32	0.65	4	57	61	1.24	7	1	158.5
31	Graham, Elizabeth	43	88	2.05	25	231	.273	1	0.02	0	0	0.00	0	13	0.30	0	41	41	0.95	1	0	108.5
7	Campbell, Torri	48	126	2.62	45	301	.269	2	0.04	0	0	0.00	0	8	0.17	5	47	52	1.08	2	0	154.5
20	Zhang, Qian	10	6	0.60	1	19	.263	0	0.00	1	2	0.10	2	16	1.60	0	0	0	0.00	0	0	7.0
6	Byrd, Ashley	9	8	0.89	2	26	.231	0	0.00	0	0	0.00	0	1	0.11	0	7	7	0.78	0	0	11.5
24	Christenson, Ashlie	49	120	2.45	57	384	.164	3	0.06	1	4	0.02	2	33	0.67	0	19	19	0.39	7	0	130.5
22	Sanders, Katie	49	148	3.02	71	495	.156	28	0.57	5	5	0.10	14	164	3.35	2	29	31	0.63	1	0	169.5
21	Tolbert, Briana	9	10	1.11	6	27	.148	0	0.00	0	1	0.00	0	1	0.11	1	3	4	0.44	0	0	12.5
18	Rice, Jordan	49	0	0.00	0	0	.000	17	0.35	5	15	0.10	0	89	1.82	0	0	0	0.00	0	0	5.0
8	King, Allison	49	0	0.00	2	9	-.222	49	1.00	9	17	0.18	11	233	4.76	0	0	0	0.00	0	3	9.0
	TEAM	-	-	-	-	-	-	-	-	-	-	-	3	-	-	-	-	-	-	-	-	-
	BAYLOR	49	709	14.47	264	1956	.228	675	13.78	56	88	1.14	36	840	17.14	12	226	125.0	2.55	19	9	890.0
	Opponents	49	641	13.08	279	1919	.189	605	12.35	36	71	0.73	56	856	17.47	31	142	102.0	2.08	32	3	779.0

Team Statistics	BU	OPP	Date	Opponent	Score	Score by set	Att.
ATTACK							
Kills	709	641	*Sep 16	at #2 Texas	L	0-3 21-25,22-25,15-25	2237
Errors	264	279	*Sep 19	KANSAS STATE	W	3-1 25-10,20-25,25-13,25-22	550
Total Attacks	1956	1919	*Sep 23	#11 IOWA STATE	W	3-0 25-23,25-19,33-31	614
Attack Pct	.228	.189	*Sep 26	KANSAS	W	3-0 25-19,25-22,25-17	544
Kills/Set	14.5	13.1	*Sep 30	MISSOURI	W	3-0 25-13,25-18,25-23	648
SET							
Assists	675	605	*Oct 03	at Colorado	W	3-0 25-14,25-19,25-15	904
Assists/Set	13.8	12.3	*Oct 07	at TTU	W	3-0 25-19,25-23,25-20	561
SERVE							
Aces	56	36	*Oct 10	TEXAS A&M	L	1-3 18-25,29-31,25-12,23-25	3022
Errors	88	71	*Oct 14	#7 NEBRASKA	L	0-3 26-28,17-25,17-25	1257
Aces/Set	1.1	0.7	*Oct 17	at Oklahoma	L	2-3 13-25,25-21,17-25,25-19,12-15	290
SERVE RECEPTIONS							
Errors	36	56	*Oct 24	at Kansas State	W	3-1 18-25,25-16,25-18,30-28	2356
Errors/Set	0.7	1.1	*Oct 28	at #9 Iowa State	L	2-3 26-24,21-25,23-25,25-23,14-16	1890
Attempts	985	1036	*Oct 31	TTU	W	3-0 25-17,25-20,25-23	807
Reception Pct	.963	.946	*Nov 04	OKLAHOMA	L	0-3 22-25,20-25,22-25	709
DEFENSE							
Digs	840	856	Record in 3-set matches: 6-3				
Digs/Set	17.1	17.5	Record in 4-set matches: 2-1				
BLOCKING							
Block Solo	12	31	Record in 5-set matches: 0-2				
Block Assist	226	142					
Total Blocks	125.0	102.0					
Blocks/Set	2.6	2.1					
Block Errors	19	32					
Ball handling errors	9	3					
ATTENDANCE							
Total	8151	8238					
Dates/Avg Per Date	8/1019	6/1373					
Neutral site #/Avg	0/0	-					
Current win streak	0	-					
Home win streak	0	-					

tv/radio speed chart



Brittany Ridenour

S * 5-10 * SO
Council Bluffs, Iowa
(Lincoln)



Caitlyn Trice

L * 5-10 * JR
Houston, Texas
(Stephen F. Austin)



Zoe Adom

OH * 5-11 * FR
Euless, Texas
(Euless Trinity)



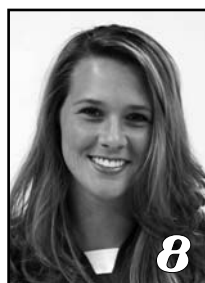
Ashley Byrd

MB * 6-2 * JR
Denton, Texas
(Ryan)



Torri Campbell

MB/RS * 6-2 * FR
Amarillo, Texas
(Amarillo)



Allison King

L * 5-11 * SO
Carrollton, Texas
(Hebron)



Taylor Barnes

S * 5-11 * SR
Arlington, Texas
(Martin)



Kiley Sherman

OH/L * 5-11 * FR
Oswego, Ill.
(Oswego East)



Anna Breyfogle

MB * 6-1 * SR
Buda, Texas
(Hays)



Jordan Rice

L * 6-0 * SO
Waco, Texas
(Midway)



Qian Zhang

OH * 6-0 * SO
Beijing, China
(Yi Jia Gao Ji)



Briana Tolbert

MB/RS * 6-3 * SO
Houston, Texas
(Cypress Springs)



Katie Sanders

OH * 6-1 * SR
Katy, Texas
(Cinco Ranch)



Ashlie Christenson

OH/RS * 6-0 * JR
Cleburne, Texas
Cleburne



Elizabeth Graham

MB * 6-2 * JR
Leander, Texas
(Vista Ridge/Texas)



Jim Barnes

Head Coach
Sixth Season



Bryan Bunn

Associate Coach



Candice O'Brien

Assistant Coach



Anthony Avillanoza

Volunteer Assistant Coach