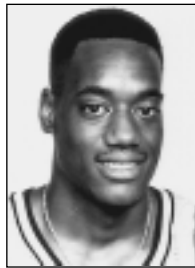


1,000-Point Club



Phil Cox
1981-1985



Ronnie McMahan
1991-1995

#1 Phil Cox — 1,724 Points

Year	G	FG-A	PCT.	3FG-A	PCT.	FT-A	PCT.	PTS	AVG.
1981-82	28	126-255	.494	—	—	126-145	.869	378	13.5
1982-83	33	182-377	.483	—	—	113-126	.897	477	14.5
1983-84	29	166-350	.474	—	—	92-115	.800	424	14.6
1984-85	27	167-338	.498	—	—	111-127	.874	445	16.5
Totals	117	641-1320	.486	—	—	442-513	.862	1724	14.7



Mike Rhodes
1977-1981



Clyde Lee
1963-1966

#2 Ronnie McMahan — 1,719 Points

Year	G	FG-A	PCT.	3FG-A	PCT.	FT-A	PCT.	PTS	AVG.
1991-92	30	109-264	.413	58-157	.369	59-82	.720	335	11.2
1992-93	34	127-271	.469	73-167	.437	49-74	.662	376	11.1
1993-94	32	165-378	.437	87-228	.382	80-93	.860	497	15.5
1994-95	28	165-439	.376	78-222	.351	103-140	.736	511	18.3
Totals	124	566-1352	.418	296-774	.382	291-389	.748	1719	13.9

#3 Mike Rhodes — 1,699 Points

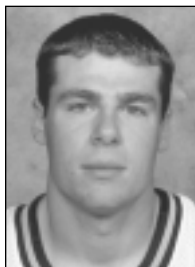
Year	G	FG-A	PCT.	3FG-A	PCT.	FT-A	PCT.	PTS	AVG.
1977-78	27	202-424	.476	—	—	103-127	.811	507	18.8
1978-79	27	174-362	.481	—	—	72-87	.827	420	15.5
1979-80	26	195-398	.489	—	—	89-110	.809	479	18.4
1980-81	23	112-230	.487	—	—	69-84	.821	293	12.7
Totals	103	683-1414	.483	—	—	333-408	.816	1699	16.5

#4 Clyde Lee — 1,691 Points

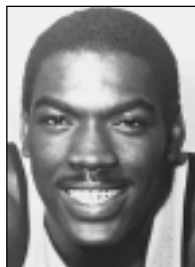
Year	G	FG-A	PCT.	3FG-A	PCT.	FT-A	PCT.	PTS	AVG.
1963-64	25	176-410	.429	—	—	119-176	.676	471	18.8
1964-65	28	239-516	.463	—	—	153-228	.671	631	22.5
1965-66	26	218-457	.455	—	—	153-206	.742	589	22.6
Totals	79	633-1383	.457	—	—	425-610	.697	1691	21.4

#5 Drew Maddux — 1,689 Points

Year	G	FG-A	PCT.	3FG-A	PCT.	FT-A	PCT.	PTS	AVG.
1994-95	27	86-216	.398	34-99	.343	51-59	.864	257	9.5
1995-96	32	155-388	.399	56-162	.346	81-106	.764	447	14.0
1996-97	31	133-312	.426	57-163	.350	109-142	.768	432	13.9
1997-98	33	197-432	.456	79-217	.364	80-106	.755	553	16.8
Totals	123	571-1348	.424	226-641	.353	321-413	.777	1689	13.7



Drew Maddux
1994-1998



Charles Davis
1976-1981

#6 Charles Davis — 1,675 Points

Year	G	FG-A	PCT.	3FG-A	PCT.	FT-A	PCT.	PTS	AVG.
1976-77	26	164-368	.446	—	—	71-94	.755	399	15.3
1977-78	25	178-353	.504	—	—	63-87	.724	419	16.8
1978-79	27	203-352	.577	—	—	96-130	.738	502	18.6
1979-80	1	3-6	.500	—	—	0-0	.000	6	6.0
1980-81	26	135-249	.542	—	—	79-99	.798	349	13.4
Totals	105	683-1328	.514	—	—	309-410	.754	1675	16.0



Jeff Fosnes
1972-1976



Tom Hagan
1966-1969

#7 Jeff Fosnes — 1,579 Points

Year	G	FG-A	PCT.	3FG-A	PCT.	FT-A	PCT.	PTS	AVG.
1972-73	21	69-129	.535	—	—	30-43	.698	168	8.0
1973-74	28	148-306	.484	—	—	58-79	.734	354	12.6
1974-75	26	238-432	.551	—	—	99-132	.750	575	22.1
1975-76	27	196-404	.485	—	—	90-119	.756	482	17.9
Totals	102	651-1271	.512	—	—	277-373	.743	1579	15.5

#8 Tom Hagan — 1,514 Points

Year	G	FG-A	PCT.	3FG-A	PCT.	FT-A	PCT.	PTS	AVG.
1966-67	26	170-331	.514	—	—	103-132	.780	443	17.0
1967-68	24	161-333	.483	—	—	141-167	.844	463	19.2
1968-69	26	246-480	.513	—	—	116-133	.872	608	23.4
Totals	76	577-1144	.504	—	—	360-432	.833	1514	19.9

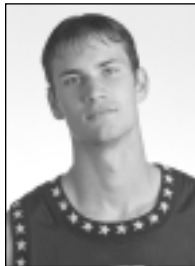
#9 Barry Goheen — 1,509 Points

Year	G	FG-A	PCT.	3FG-A	PCT.	FT-A	PCT.	PTS	AVG.
1985-86	28	91-168	.542	—	—	44-52	.846	226	8.1
1986-87	34	138-297	.465	29-78	.372	114-136	.838	419	12.3
1987-88	31	134-287	.467	29-67	.433	86-112	.768	383	12.4
1988-89	33	158-352	.449	60-137	.438	105-139	.755	481	14.6
Totals	126	521-1104	.472	118-282	.418	349-439	.795	1509	12.0



Barry Goheen
1985-1989

1,000-Point Club



Dan Langhi
1996-2000



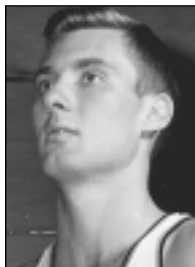
Scott Draud
1986-1991

#10 Dan Langhi — 1,502 Points

Year	G	FG-A	PCT.	3FG-A	PCT.	FT-A	PCT.	PTS	AVG.
1996-97	31	33-76	.434	9-27	.333	55-74	.743	130	4.2
1997-98	31	68-162	.420	24-67	.358	36-47	.766	196	6.3
1998-99	29	162-388	.418	47-122	.385	141-167	.844	512	17.7
1999-00	30	222-465	.477	58-144	.403	162-186	.871	664	22.1
Totals	121	485-1091	.446	138-360	.383	394-474	.831	1502	12.4

#11 Scott Draud — 1,466 Points

Year	G	FG-A	PCT.	3FG-A	PCT.	FT-A	PCT.	PTS	AVG.
1986-87	34	80-190	.421	54-123	.439	34-45	.756	248	7.3
1987-88	31	69-172	.401	43-101	.426	35-44	.796	216	7.0
1989-90	35	178-415	.429	90-208	.433	100-115	.870	546	15.6
1990-91	30	146-331	.441	101-225	.449	63-72	.875	456	15.2
Totals	130	473-1108	.427	288-657	.438	232-276	.841	1466	11.3



Bobby Thym
1953-1957



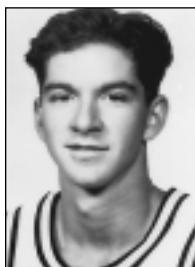
Kevin Anglin
1989-1993

#12 Bobby Thym — 1,403 Points

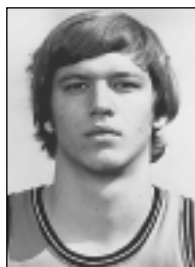
Year	G	FG-A	PCT.	3FG-A	PCT.	FT-A	PCT.	PTS	AVG.
1953-54	22	110-276	.399	—	—	76-123	.618	296	13.5
1954-55	22	112-356	.315	—	—	128-177	.723	352	16.0
1955-56	23	118-298	.362	—	—	143-204	.701	379	16.5
1956-57	22	135-318	.425	—	—	106-171	.620	376	17.1
Totals	89	475-1248	.381	—	—	453-675	.671	1403	15.8

#13 Kevin Anglin — 1,389 Points

Year	G	FG-A	PCT.	3FG-A	PCT.	FT-A	PCT.	PTS	AVG.
1989-90	35	42-124	.339	5-36	.139	84-104	.808	173	4.9
1990-91	30	110-229	.480	34-84	.405	91-120	.758	345	11.5
1991-92	30	148-324	.457	55-137	.402	155-207	.749	506	16.9
1992-93	34	120-312	.385	40-144	.278	85-118	.720	365	10.7
Totals	129	420-989	.425	134-401	.344	415-549	.756	1389	10.8



Billy McCaffrey
1992-1994



Butch Feher
1972-1976

#14 Billy McCaffrey — 1,359 Points

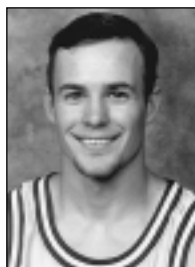
Year	G	FG-A	PCT.	3FG-A	PCT.	FT-A	PCT.	PTS	AVG.
1992-93	34	241-436	.553	83-162	.512	134-154	.870	699	20.6
1993-94	32	217-476	.456	58-154	.377	168-189	.880	660	20.6
Totals	66	458-912	.502	141-316	.446	302-343	.880	1359	20.6

#15 Butch Feher — 1,345 Points

Year	G	FG-A	PCT.	3FG-A	PCT.	FT-A	PCT.	PTS	AVG.
1972-73	21	44-109	.404	—	—	30-47	.638	118	5.6
1973-74	28	84-211	.398	—	—	69-84	.821	237	8.5
1974-75	26	197-385	.512	—	—	139-182	.764	533	20.5
1975-76	27	173-362	.478	—	—	111-144	.771	457	16.9
Totals	102	498-1067	.467	—	—	349-457	.763	1345	13.2



Terry Compton
1971-1974



Frank Seckar
1992-1996

#16 Terry Compton — 1,326 Points

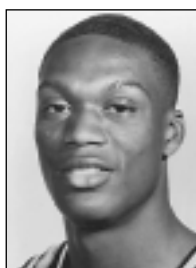
Year	G	FG-A	PCT.	3FG-A	PCT.	FT-A	PCT.	PTS	AVG.
1971-72	26	173-319	.542	—	—	109-153	.712	450	17.3
1972-73	26	191-388	.492	—	—	79-104	.760	461	17.7
1973-74	28	163-358	.455	—	—	89-102	.873	415	14.8
Totals	80	527-1065	.495	—	—	277-359	.772	1326	16.6

#17 Frank Seckar — 1,317 Points

Year	G	FG-A	PCT.	3FG-A	PCT.	FT-A	PCT.	PTS	AVG.
1992-93	34	45-112	.402	30-70	.429	32-44	.727	152	4.5
1993-94	32	88-201	.438	62-138	.449	46-63	.730	284	8.9
1994-95	28	117-272	.430	83-195	.426	41-58	.707	358	12.8
1995-96	32	170-407	.418	103-272	.379	80-108	.741	523	16.3
Totals	126	429-992	.428	278-675	.419	199-273	.729	1317	10.5

#18 Barry Booker — 1,310 Points

Year	G	FG-A	PCT.	3FG-A	PCT.	FT-A	PCT.	PTS	AVG.
1985-86	26	38-90	.422	—	—	18-25	.720	94	3.6
1986-87	34	134-281	.477	85-170	.500	50-60	.833	403	11.9
1987-88	31	120-266	.451	74-171	.433	24-32	.750	338	10.9
1988-89	33	166-352	.472	87-194	.449	56-86	.667	475	14.4
Totals	124	458-989	.463	246-535	.460	148-203	.729	1310	10.6



Barry Booker
1985-1989

1,000-Point Club



Matt Freije
2000-Present



Will Perdue
1983-1988

#19 Matt Freije — 1,284 Points

Year	G	FG-A	PCT.	3FG-A	PCT.	FT-A	PCT.	PTS	AVG.
2000-01	27	98-197	.497	23-59	.390	61-77	.792	280	10.4
2001-02	32	171-367	.466	33-97	.340	109-142	.768	484	15.1
2002-03	29	178-402	.443	65-185	.351	99-124	.798	520	17.9
Totals	88	447-966	.463	121-341	.355	269-343	.784	1284	14.6



Jeff Turner
1980-1984



Thorpe Weber
1968-1971

#20 Will Perdue — 1,281 Points

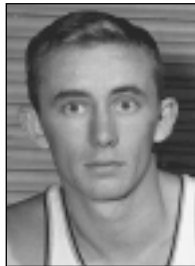
Year	G	FG-A	PCT.	3FG-A	PCT.	FT-A	PCT.	PTS	AVG.
1983-84	17	21-45	.467	—	—	4-9	.444	46	2.7
1985-86	22	31-53	.585	—	—	14-32	.438	76	3.2
1986-87	34	233-389	.599	—	—	126-204	.618	592	17.4
1987-88	31	234-369	.634	—	—	99-147	.674	567	18.3
Totals	104	519-856	.606	—	—	243-392	.620	1281	12.3

#21 Jeff Turner — 1,271 Points

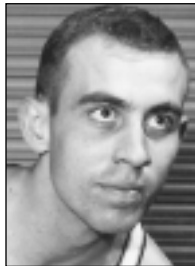
Year	G	FG-A	PCT.	3FG-A	PCT.	FT-A	PCT.	PTS	AVG.
1980-81	28	40-96	.417	—	—	20-31	.645	100	3.6
1981-82	27	99-189	.524	—	—	52-71	.732	250	9.3
1982-83	33	180-366	.492	—	—	75-98	.765	435	13.2
1983-84	29	200-375	.533	—	—	86-102	.843	486	16.8
Totals	117	519-1026	.506	—	—	233-302	.771	1271	10.9

#22 Thorpe Weber — 1,209 Points

Year	G	FG-A	PCT.	3FG-A	PCT.	FT-A	PCT.	PTS	AVG.
1968-69	26	138-282	.489	—	—	86-116	.741	362	13.9
1969-70	26	161-377	.427	—	—	86-131	.656	408	15.7
1970-71	26	174-390	.446	—	—	91-131	.695	439	16.9
Totals	78	473-1049	.451	—	—	263-378	.696	1209	15.5



Al Rochelle
1953-1957



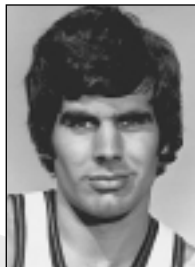
Jim Henry
1956-1959

#23 Al Rochelle — 1,206 Points

Year	G	FG-A	PCT.	3FG-A	PCT.	FT-A	PCT.	PTS	AVG.
1953-54	8	10-36	.278	—	—	29-41	.707	49	6.1
1954-55	22	119-309	.385	—	—	117-157	.745	355	16.1
1955-56	23	134-345	.388	—	—	153-204	.750	421	18.3
1956-57	22	153-376	.407	—	—	75-96	.781	381	17.3
Totals	75	416-1066	.390	—	—	374-498	.751	1206	16.1

#24 Jim Henry — 1,198 Points

Year	G	FG-A	PCT.	3FG-A	PCT.	FT-A	PCT.	PTS	AVG.
1956-57	22	95-212	.448	—	—	101-151	.670	291	13.2
1957-58	24	182-393	.463	—	—	129-187	.790	493	20.5
1958-59	22	148-310	.477	—	—	118-150	.787	414	18.8
Totals	68	425-915	.464	—	—	348-488	.713	1198	17.6



Joe Ford
1972-1976



Billy Joe Adcock
1946-1950

#25 Joe Ford — 1,193 Points

Year	G	FG-A	PCT.	3FG-A	PCT.	FT-A	PCT.	PTS	AVG.
1972-73	26	46-121	.380	—	—	48-64	.750	140	5.4
1973-74	28	115-229	.502	—	—	66-89	.742	296	10.6
1974-75	26	121-257	.471	—	—	94-112	.839	336	12.9
1975-76	27	159-309	.515	—	—	103-126	.817	421	15.6
Totals	107	441-916	.481	—	—	311-391	.795	1193	11.1

#26 Billy Joe Adcock — 1,190 Points

Year	G	FG-A	PCT.	3FG-A	PCT.	FT-A	PCT.	PTS	AVG.
1946-47	14	67	—	—	—	26-47	.553	160	11.4
1947-48	22	144	—	—	—	88-129	.682	376	17.1
1948-49	22	130	—	—	—	79-125	.632	339	15.4
1949-50	25	112	—	—	—	91-141	.645	315	12.5
Totals	83	453	—	—	—	284-442	.643	1190	14.3

#27 Brett Burrow — 1,149 Points

Year	G	FG-A	PCT.	3FG-A	PCT.	FT-A	PCT.	PTS	AVG.
1982-83	33	53-120	.442	—	—	52-65	.800	158	4.8
1983-84	29	90-175	.514	—	—	41-64	.641	221	7.6
1984-85	28	137-265	.517	—	—	126-148	.851	400	14.3
1985-86	28	126-256	.492	—	—	118-143	.825	370	13.2
Totals	118	406-816	.498	—	—	337-420	.802	1149	9.7

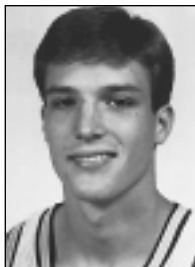


Brett Burrow
1982-1986

1,000-Point Club



Babe Taylor
1952-1956



Bruce Elder
1990-1993

#28 Babe Taylor — 1,144 Points

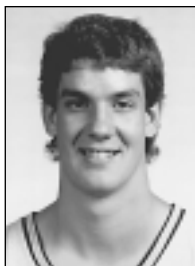
Year	G	FG-A	PCT.	3FG-A	PCT.	FT-A	PCT.	PTS	AVG.
1952-53	19	95-276	.344	—	—	17-23	.739	207	10.9
1953-54	22	105-318	.330	—	—	62-74	.838	272	12.4
1954-55	20	137-384	.357	—	—	67-93	.720	341	17.0
1955-56	23	141-391	.361	—	—	42-57	.737	324	14.1
Totals	84	478-1371	.349	—	—	188-247	.761	1144	13.6

#29 Bruce Elder — 1,086 Points

Year	G	FG	PCT.	3FG-A	PCT.	FT-A	PCT.	PTS	AVG.
1990-91	30	117-248	.472	26-71	.361	80-106	.755	340	11.3
1991-92	29	124-260	.477	33-78	.423	79-110	.718	360	12.4
1992-93	34	142-239	.594	20-52	.385	82-105	.781	386	11.4
Totals	93	383-747	.513	79-202	.391	241-321	.751	1086	11.7



Bo Wyenandt
1965-1968



Todd Milholland
1988-1992

#30 Bo Wyenandt — 1,078 Points

Year	G	FG	PCT.	3FG-A	PCT.	FT-A	PCT.	PTS	AVG.
1965-66	26	127-271	.469	—	—	75-101	.743	329	12.7
1966-67	26	160-313	.514	—	—	75-101	.743	395	16.5
1967-68	26	124-289	.429	—	—	106-127	.835	354	13.6
Totals	78	411-873	.471	—	—	256-329	.778	1078	13.8

#31 Todd Milholland — 1,053 Points

Year	G	FG	PCT.	3FG-A	PCT.	FT-A	PCT.	PTS	AVG.
1988-89	31	36-75	.480	2-6	.333	14-17	.824	88	2.8
1989-90	35	134-258	.519	11-29	.379	58-78	.744	337	9.6
1990-91	24	102-196	.520	4-13	.308	74-91	.813	282	11.8
1991-92	29	140-260	.539	5-15	.333	61-75	.813	346	11.9
Totals	119	412-789	.522	22-63	.349	207-261	.793	1053	8.8



Dan Finch
1951-1954



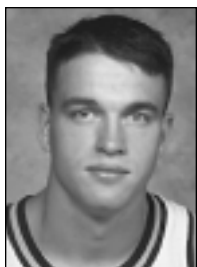
Sam Howard
1998-2002

#32 Dan Finch — 1,045 Points

Year	G	FG	PCT.	3FG-A	PCT.	FT-A	PCT.	PTS	AVG.
1951-52	25	67-191	.351	—	—	58-96	.604	192	7.7
1952-53	18	124-351	.353	—	—	124-183	.678	372	20.7
1953-54	22	165-427	.386	—	—	151-211	.716	481	21.9
Totals	65	356-969	.367	—	—	333-490	.680	1045	16.1

#33 Sam Howard — 1,026 Points

Year	G	FG	PCT.	3FG-A	PCT.	FT-A	PCT.	PTS	AVG.
1998-99	29	79-213	.371	58-158	.367	17-23	.739	233	8.0
1999-00	29	103-265	.389	74-206	.359	20-27	.741	300	10.3
2000-01	30	69-201	.343	35-120	.292	20-27	.741	193	6.4
2001-02	31	108-237	.456	67-159	.421	17-25	.680	300	9.7
Totals	119	359-916	.392	234-643	.364	74-102	.725	1026	8.6



Austin Bates
1993-1998



Perry Wallace
1967-1970

#34 Austin Bates — 1,020 Points

Year	G	FG	PCT.	3FG-A	PCT.	FT-A	PCT.	PTS	AVG.
1993-94	15	4-11	.364	0-0	.000	3-6	.500	11	0.7
1995-96	32	80-169	.473	0-0	.000	14-23	.609	174	5.4
1996-97	31	158-302	.523	0-2	.000	63-89	.708	379	12.2
1997-98	33	181-355	.510	0-2	.000	93-139	.676	456	13.8
Totals	111	423-837	.505	0-4	.000	173-257	.673	1,020	9.2

#35 Perry Wallace — 1,010 Points

Year	G	FG	PCT.	3FG-A	PCT.	FT-A	PCT.	PTS	AVG.
1967-68	26	111-260	.426	—	—	30-60	.500	252	9.7
1968-69	26	135-308	.438	—	—	27-53	.509	297	11.4
1969-70	26	197-400	.493	—	—	67-87	.770	461	17.7
Totals	78	443-968	.458	—	—	124-200	.620	1010	12.9

Awards & Honors

All-Americans

Year	Name	Position
1994	Billy McCaffrey	Guard
1993	Billy McCaffrey	Guard
1988	Will Perdue	Center
1969	Tom Hagan	Guard
1966	Clyde Lee	Center
1950	Billy Joe Adcock	Forward

Postseason Honors

All-NCAA Tournament

Year	Name	Position
1974	Jeff Fosnes	Forward
1965	Clyde Lee	Center
1965	Keith Thomas	Guard

NIT All-Tournament

Year	Name	Position
1994	Frank Seckar	Guard
1990	Scott Draud (MVP)	Guard

SEC All-Tournament First Team

Year	Name	Position
1989	Barry Booker	Forward/Guard
1981	Al Miller	Guard
1951	Dave Kardokus	Forward
1941	Pinky Lipscomb	Forward
1939	Pinky Lipscomb	Forward

SEC All-Tournament Second Team

Year	Name	Position
1952	Dave Kardokus	Forward
1951	Bob Dudley Smith	Guard
1951	Al Weiss	Center
1950	Billy Joe Adcock	Forward
1949	Billy Joe Adcock	Forward
1948	Billy Joe Adcock	Forward
1940	Ross Hanna	Forward
1939	Joe Little	Guard
1936	Dick Plasman	Center
1934	Willie Geny	Forward

SEC Honors

C= Coaches Poll
 AP=Associated Press
 UPI=United Press Intl. (now defunct)

SEC Player of the Year

Year	Name	Selection
2000	Dan Langhi, F	AP, C
1993	Billy McCaffrey, G	C
1988	Will Perdue, C	C
1974	Jan van Breda Kolff, G	C
1966	Clyde Lee, C	C
1965	Clyde Lee, C	C

SEC Freshman of the Year

Year	Name	Selection
1978	Mike Rhodes, F	C

SEC All-Freshman

Year	Name	Selection
2002	Brian Thornton, F	C
2001	Matt Freije, F	C
1998	Greg LaPointe, F	C
1995	Drew Maddux, G	C
1992	Ronnie McMahan, G	C
1987	Scott Draud, G	C

All-SEC First Team

Year	Name	Selection
2000	Dan Langhi, F	AP, C
1998	Drew Maddux, G	AP, C
1994	Billy McCaffrey, G	AP, C
1993	Billy McCaffrey, G	AP, C
1991	Scott Draud, G	C
1989	Barry Goheen, G	C
1989	Frank Kornet, C	C
1988	Will Perdue, C	UPI, AP, C
1987	Will Perdue, C	AP, C
1985	Phil Cox, G	AP, C
1984	Jeff Turner, F	AP, C
1983	Phil Cox, G	C
1982	Willie Jones, C	C
1980	Mike Rhodes, F	C
1979	Charles Davis, F	C
1976	Jeff Fosnes, F	C
1975	Jeff Fosnes, F	C
1974	Terry Compton, G	UPI, C
1974	Jan van Breda Kolff, G	UPI, AP, C
1973	Terry Compton, G	C
1971	Thorpe Weber, F	C
1970	Perry Wallace, F	C
1969	Tom Hagan, G	UPI, AP, C
1968	Tom Hagan, G	UPI, AP, C
1968	Bob Warren, F	C
1967	Bo Wyenandt, F	C
1967	Tom Hagan, G	AP, C
1966	Clyde Lee, C	UPI, AP, C
1966	Keith Thomas, G	AP, C
1965	Bob Grace, F	C
1965	Clyde Lee, C	UPI, AP, C
1965	John Ed Miller, G	UPI, C
1964	Clyde Lee, C	AP, C
1964	John Ed Miller, G	C
1963	John Russell, G	C
1962	John Russell, G	C
1961	Bill Depp, C	AP, C
1960	Bill Depp, C	C
1959	Jim Henry, G	AP, C
1958	Jim Henry, G	C
1957	Al Rochelle, G	AP
1956	Al Rochelle, G	C
1954	Dan Finch, G	AP
1951	Dave Kardokus, F	AP
1950	Billy Joe Adcock, F	AP

1948 Billy Joe Adcock, F C

All-SEC Second Team

Year	Name	Selection
2003	Matt Freije, F	C
1999	Dan Langhi, F	C, AP
1997	Pax Whitehead, F	C, AP
1996	Frank Seckar, G	C, AP
1995	Ronnie McMahan, G-F	C, AP
1993	Kevin Anglin, F	C
1993	Bruce Elder, F	C
1989	Barry Goheen, G	AP, UPI
1989	Frank Kornet, C	AP, UPI
1987	Will Perdue, C	AP
1985	Phil Cox, G	UPI
1984	Jeff Turner, F	UPI
1983	Phil Cox, G	AP, UPI
1980	Mike Rhodes, F	UPI
1979	Charles Davis, F	UPI, AP
1979	Tommy Springer, G	AP
1976	Jeff Fosnes, F	UPI, AP
1975	Jeff Fosnes, F	UPI, AP
1974	Terry Compton, G	AP
1974	Jeff Fosnes, F	AP
1973	Terry Compton, G	UPI
1971	Thorpe Weber, F	UPI, AP
1970	Perry Wallace, F	UPI, AP
1968	Bo Wyenandt, F	UPI
1967	Tom Hagan, G	UPI
1967	Jerry Southwood, G	UPI
1967	Bo Wyenandt, F	AP
1966	Keith Thomas, G	UPI
1965	Bob Grace, F	AP
1965	John Ed Miller, G	AP
1964	John Ed Miller, G	AP
1963	John Russell, G	AP
1962	John Russell, G	AP
1958	Jim Henry, G	AP
1957	Bobby Thym, G	AP
1956	Al Rochelle, G	AP
1956	Clarence Taylor, G	AP
1953	Dan Finch, G	AP
1952	Dave Kardokus, F	AP
1949	Billy Joe Adcock, F	AP

All-SEC Third Team

Year	Name	Selection
2003	Matt Freije, F	AP
2002	Matt Freije, F	C
2000	Atiba Prater, G	AP
1995	Frank Seckar, G	C
1994	Ronnie McMahan, G	AP, C
1993	Kevin Anglin, F	AP
1993	Bruce Elder, F	AP
1991	Kevin Anglin, G	AP
1991	Scott Draud, G	UPI, AP
1990	Scott Draud, G	UPI
1988	Barry Goheen, G	UPI, AP
1986	Brett Burrow, C	UPI
1984	Phil Cox, G	UPI, AP

Awards & Honors

1981	Charles Davis, F	UPI
1980	Mike Rhodes, F	AP
1979	Mike Rhodes, F	UPI
1979	Tommy Springer, G	UPI
1978	Charles Davis, F	UPI
1978	Mike Rhodes, F	UPI, AP
1976	Butch Feher, G	UPI, AP
1974	Jeff Fosnes, F	UPI
1973	Steve Turner, C	AP
1972	Terry Compton, G	UPI
1971	Rod Freeman, F	AP
1971	Rudy Thacker, G	UPI
1970	Thorpe Weber, F	UPI, AP
1968	Bob Warren, F	UPI, AP
1968	Bo Wyenandt, F	AP
1967	Kenny Gibbs, F	AP
1967	Jerry Southwood, G	AP
1967	Bob Warren, F	UPI, AP
1967	Bo Wyenandt, F	UPI
1965	Bob Grace, F	UPI
1961	Don Ringstaff, F	AP
1960	Ben Rowan, F	AP
1956	Bobby Thym, F	AP
1955	Al Rochelle, G	AP

Coaches Awards

National Coach of the Year

1993	Eddie Fogler	AP, UPI, CBS, USBWA, Scripps-Howard, <i>Sports Illustrated</i> , <i>Sporting News</i> , <i>Basketball Weekly</i>
------	--------------	--

SEC Coach of the Year

1993	Eddie Fogler	AP, C
1989	C.M. Newton	AP
1988	C.M. Newton	AP, UPI
1979	Wayne Dobbs	UPI
1976	Roy Skinner	UPI
1974	Roy Skinner	AP, UPI
1967	Roy Skinner	AP, UPI
1965	Roy Skinner	AP, UPI

Academic Awards

First Team Academic All-American

1993	Bruce Elder*
1976	Jeff Fosnes
1975	Jeff Fosnes

*All-American of the Year

Second Team Academic All-American

1996	Frank Seckar
1992	Bruce Elder
1991	Steve Grant

Academic All-SEC

2003	Matt Carter, Russell Lakey, Martin Schnedlitz
2002	Matt Carter, Greg LaPointe

2001	Matt Carter, Sam Howard
2000	Darius Coulibaly, Atiba Prater, James Strong, Sam Howard
1999	Vince Ford
1998	Billy Di Spaltro, Drew Maddux
1997	Howard Pride
1996	Frank Seckar, Chad Sheron
1995	Bryan Milburn, Frank Seckar, Chad Sheron, Pax Whitehead
1994	Bryan Milburn, Frank Seckar, Chad Sheron
1993	Kevin Anglin, Bruce Elder, Bryan Milburn
1992	Kevin Anglin, Bruce Elder
1991	Kevin Anglin, Scott Draud, Bruce Elder, Steve Grant, Charles Mayes
1990	Alberto Ballestra, Scott Draud, Steve Grant, Charles Mayes
1989	James Amsler, Barry Goheen, Steve Grant, Charles Mayes
1988	Barry Booker, Barry Goheen
1987	Barry Goheen, Steve Reece
1986	Steve Reece
1985	Phil Cox, Steve Reece
1984	Phil Cox, Al McKinney, Jeff Turner
1983	Phil Cox, Al McKinney, Jeff Turner, Doug Weikert
1980	Pat Berwanger
1979	Tom Shultz
1978	Tom Shultz
1977	Tom Shultz
1976	Jeff Fosnes, Mike Moore
1975	Jeff Fosnes
1974	Bob Chess, Terry Compton, Jeff Fosnes
1973	Ray Maddux
1972	Ray Maddux
1971	Van Oliver
1970	Ralph Mayes
1969	Ralph Mayes
1968	Gene Lockyear
1967	Gene Lockyear
1966	Ron Knox, Gene Lockyear
1963	Bob Scott

Sportsmanship

SEC Sportsmanship Award

(Presented by the Tennessee Club. Based on vote by league players)

1970	Perry Wallace
1968	Bob Warren
1966	Clyde Lee
1965	John Ed Miller

Roy Skinner Award

(Presented by the Kiwanis Club to the player who has exhibited excellence in leadership, perseverance and performance during his career)

2003	Matt Carter
2002	Darius Coulibaly, Sam Howard
2001	Greg LaPointe, Anthony Williams
2000	Dan Langhi
1999	Vince Ford
1998	Austin Bates, Billy Di Spaltro, Drew Maddux
1997	Howard Pride
1996	Frank Seckar
1995	Ronnie McMahan
1994	Billy McCaffrey
1993	Kevin Anglin, Bruce Elder
1992	Todd Milholland
1991	Charles Mayes, Steve Grant, Scott Draud
1990	Derrick Wilcox

Civitan Sportsmanship Award

2003	Matt Freije
1997	Drew Maddux
1994	Dan Hall
1993	Kevin Anglin
1992	Todd Milholland
1991	Charles Mayes
1990	Derrick Wilcox
1989	James Amsler
1988	Barry Booker
1987	Steve Reece
1986	Jeff Gary
1985	Phil Cox
1984	Jimmy Lenz
1983	James Williams
1982	Doug Weikert
1981	Brian Allsmiller
1980	Mark Elliott
1979	Mark Elliott
1977	Tim Thompson
1976	Joe Ford
1975	Bob Chess
1974	Lee Fowler
1973	Terry Compton
1972	Tom Arnholt
1970	Perry Wallace
1969	Tom Hagan
1968	Bob Warren
1967	Bob Warren
1966	Keith Thomas
1965	Clyde Lee
1964	Clyde Lee
1963	Jerry Hall
1962	Bobby Bland
1961	Larry Banks
1960	Jim Henry, Ben Rowan